

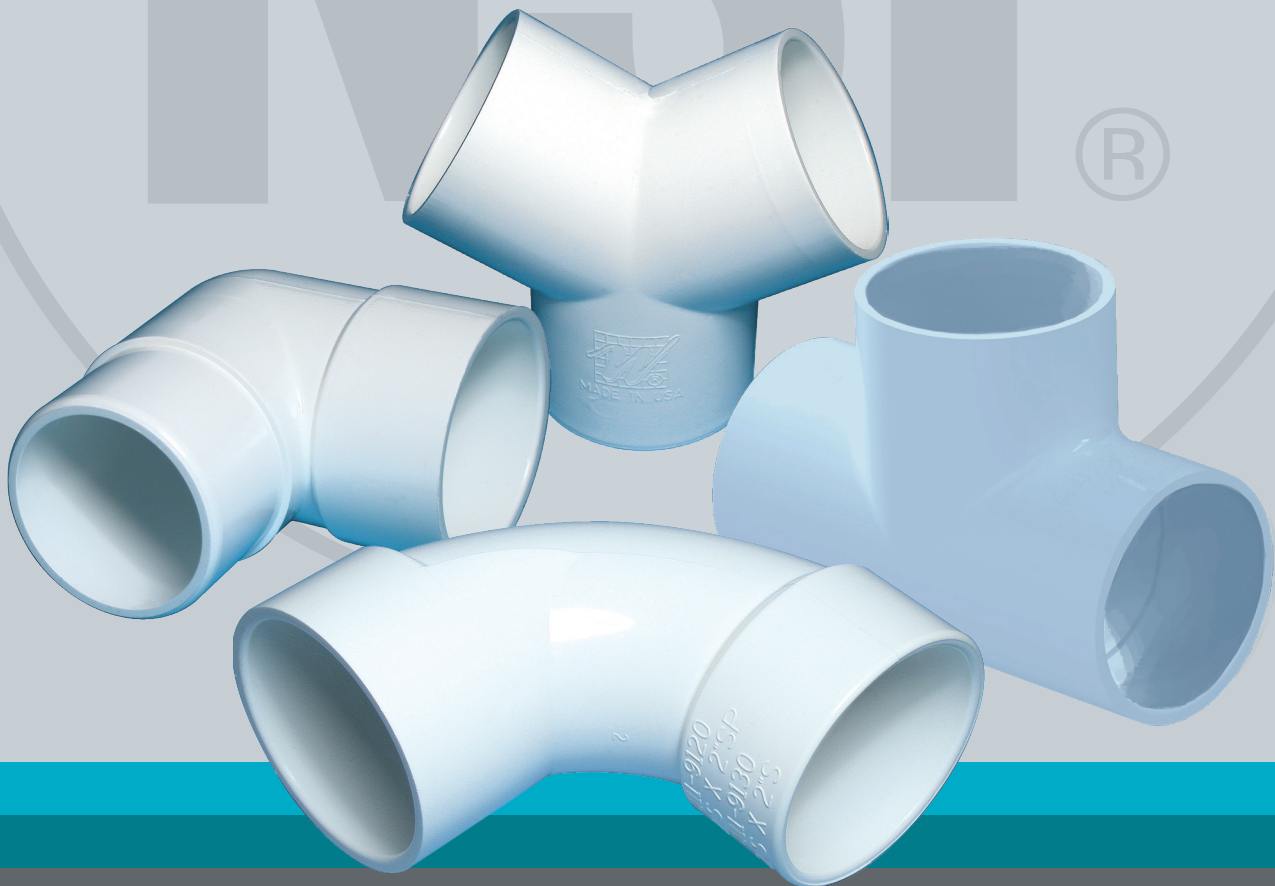


**50+**  
Years of USA  
Manufacturing

# PVC PLUMBING FITTINGS

**Features:**

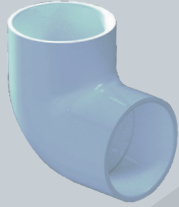
- Buy in smaller, manageable quantities
- No need for bulk truckload orders
- All fittings are NSF-compliant
- Fittings meet or exceed schedule 40 standard
- All parts made in USA



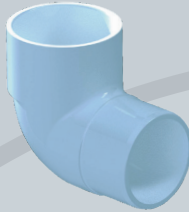
011602.0126  
[www.waterwayplastics.com](http://www.waterwayplastics.com)

**MADE IN THE**  
**USA**

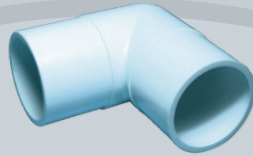
## Fittings / Ells & Sweep Ells



411-4010  
411-2120



411-3090  
411-2000  
411-4000  
411-5080



411-5550  
411-2100



411-2010  
411-5120



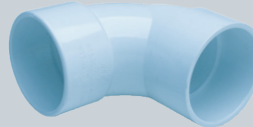
411-2020  
411-4040  
411-5030



411-3800



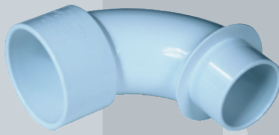
411-2200



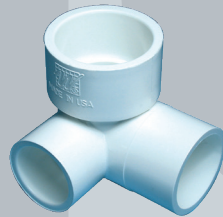
411-9110  
411-9130  
411-9150  
411-9200



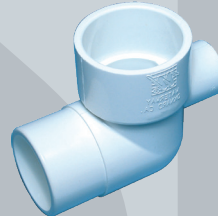
411-9100  
411-9120  
411-9140  
411-9210



411-9160



411-4050



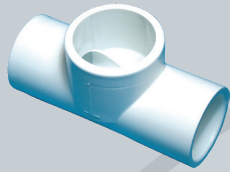
411-4080



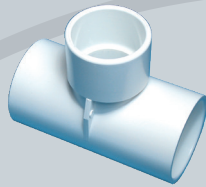
411-5090

WW Part #	IND Part #	Description	Case Qty.	WW Part #	IND Part #	Description	Case Qty.
411-4010	406-015	90° Ell - 1 1/2"S x 1 1/2"S	50	411-9110	406-015S	90° Sweep Ell - 1 1/2"S x 1 1/2"S	100
411-2120	406-020	90° Ell - 2"S x 2"S	65	411-9130	406-020S	90° Sweep Ell - 2"S x 2"S	60
411-2000	409-010	90° Street Ell - 1"S x 1"Spg	50	411-9150	406-025S	90° Sweep Ell - 2 1/2"S x 2 1/2"S	30
411-4000	409-015	90° Street Ell - 1 1/2"S x 1 1/2"Spg	130	411-9200	406-030S	90° Sweep Ell - 3"S x 3"S	15
411-5080	409-020	90° Street Ell - 2"S x 2"Spg	60	411-9100	P309-015	90° Sweep Ell - 1 1/2"Spg x 1 1/2"Spg	100
411-3090	409-007	90° Street Ell - 3/4"Spg x 3/4"Spg	250	411-9120	P309-020	90° Sweep Ell - 2"S x 2"Spg	60
411-5550	422-015	90° Spigot Ell - 1 1/2"Spg x 1 1/2"Spg	50	411-9140	P309-025	90° Sweep Ell - 2 1/2"S x 2 1/2"Spg	30
411-2100		90° Spigot Ell - 2"Spg x 2" Spg	60	411-9210	P309-030	90° Sweep Ell - 3"S x 3"Spg	15
411-2010	417-010	45° Ell - 1"S x 1"S	150	411-9160		90° Red Sweep Ell - 2 1/2"S x 2"Spg	35
411-5120	417-020	45° Ell - 2"S x 2"S	70	411-4080		90° Street Ell 1 1/2"S x 1 1/2"Spg x 1"S Outlet	50
411-2020	427-010	45° Street Ell - 1"S x 1"Spg	50	411-3800		65° Street Ell 1 1/2"S x 1 1/2" Short Spg	50
411-4040	427-015	45° Street Ell - 1 1/2"S x 1 1/2"Spg	40	411-4050		90° Ell 1 1/2"S x 1 1/2"Spg x 1"S Outlet	25
411-5030	427-020	45° Street Ell - 2"S x 2"Spg	90	411-5090	416-020	22.5 Ell 2"S x 2"S	90
411-2200		45° Spigot Ell - 2"Spg x 2"Spg	80				

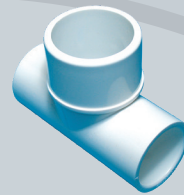
## Fittings / Tees



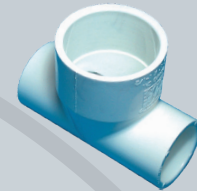
413-2060



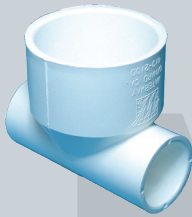
413-4000



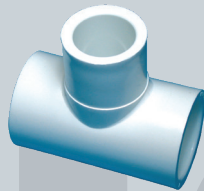
413-2000



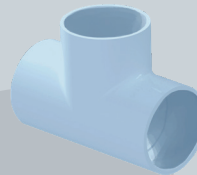
413-2030



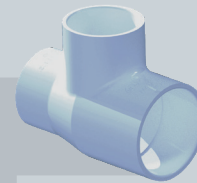
413-1980



413-2080



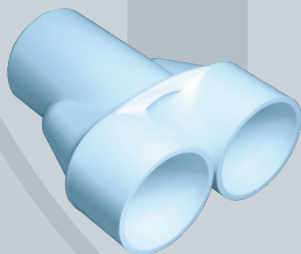
413-1740



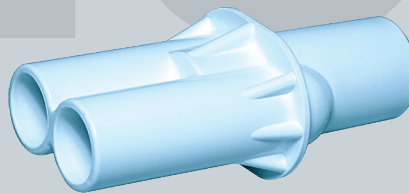
413-2290

WW Part #	IND Part #	Description	Case Qty.	WW Part #	IND Part #	Description	Case Qty.
413-4000		Tee 1 1/2" S x 1 1/2" S x 1 1/2" Spg	90	413-1740	401-020	Tee 2" S x 2" S x 2" S	40
413-2000		Tee 1" S x 1" S x 1 1/2" Spg	40	413-2290	401-241	Reducer Tee 2" S x 1 1/2" S x 1 1/2" Spg	60
413-2030		Tee 1" S x 1" S x 1 1/2" S	50				
413-2060		Low Profile Tee 1" S x 1" S x 1 1/2" Spg	50				
413-2080		Tee 1" S x 1" S x 1" Spg	100				
413-1980		Reducer Tee 1/2" S x 1/2" S x 1" S	100				

## Fittings / Manifold Wyes



672-8000  
672-8040  
672-8050



672-8010  
672-8020



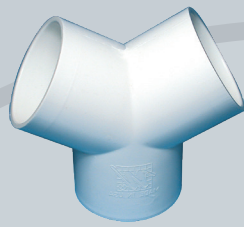
672-9540

WW Part #	IND Part #	Description	Case Qty.
672-8010		Manifold Wyes 3/4" S x 1/2" S x 1/2" S	220
672-8020		Manifold Wyes 1" S x 3/4" S x 3/4" S	180
672-8040		Manifold Wyes 1 1/2" S x 1 1/2" S x 1 1/2" S	50
672-8000		Manifold Wyes 2" S x 2" S x 2" S	40
672-8050		Manifold Wyes 2 1/2" S x 2 1/2" S x 2 1/2" S	20
672-9540		Distributor Manifold (1) 2 1/2" S x (3) 2" S	25

## Fittings / Wyes



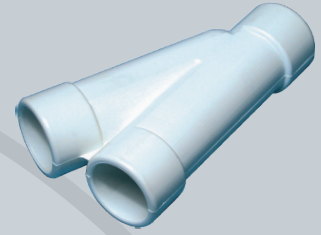
413-4100



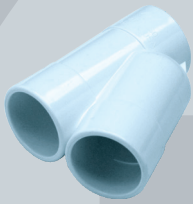
413-1810  
413-4160  
413-5080



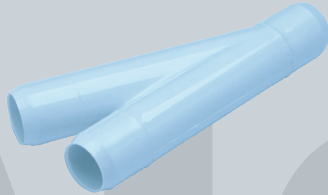
413-4130  
413-5040



413-1820



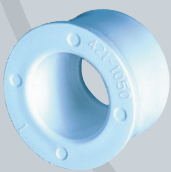
413-4150



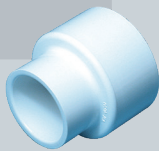
413-1890

WW Part #	IND Part #	Description	Case Qty.	WW Part #	IND Part #	Description	Case Qty.
413-1810		120° Wye - ¾"S x ¾"S x ¾"S	50	413-4130	475-21131	120° Wye - 1 ½"S x 1"S x 1"S	70
413-4160		120° Wye - 1"S x 1"S x 1"S	100	413-1820		22 ½° Wye - ¾"S x ¾"S x ¾"S	50
413-4100		120° Wye - 1 ½"S x 1 ½"S x 1 ½"S	70	413-2020		22 ½° Wye - 1"S x 1"S x 1"S	120
413-5080		120° Wye - 2"S x 2"S x 2"S	50	413-4140		22 ½° Wye - 1 ½"S x 1"S x 1"S	90
413-5040		120° Wye - 2"S x 1 ½"S x 1 ½"S	50	413-4150		22,5" Wye 1"S x 1"S x 1"S	170
				413-1890		22,5" Wye (3) 1"SB (26 mm)	250

## Fittings / Miscellaneous Plugs, Reducers & Couplers



421-1050  
421-4070  
421-4201



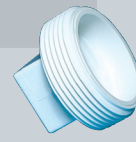
421-4020  
421-5000



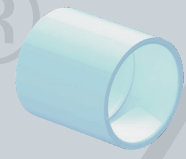
715-0000  
715-2000  
715-4000  
715-9880  
715-9890



715-1350



715-1230  
715-9910



419-4180

WW Part #	IND Part #	Description	Case Qty.	WW Part #	IND Part #	Description	Case Qty.
715-0000	449-005	Plug ½" Spg	800	715-1350	447-010	Cap 1"S (26 mm)	800
715-9890	449-007	Plug ¾" Spg	200	421-1050	437-130	Reducer bushing 1"SpG x ½"S	225
715-2000	449-010	Plug 1" Spg	200	421-4070	437-251	Reducer bushing 2"SpG x 1 ½"S	500
715-4000	449-015	Plug 1 ½" Spg	100	421-4201	837-292	Reducer bushing 2 ½"SpG x 2"S	200
715-9880	449-020	Plug 2" Spg	100	421-4020		Bell Reducer 1 ½"S x 1"S	75
715-1230	450-015	1 ½" NPT Plug	75	421-5000		Bell Reducer 2"S x 1 ½"S	75
715-9910	450-020	2" NPT Plug	75	419-4180	429-020	Coupling 2"S x 2"S	120