

Thread-in Gunite Jets



Mini Storm Thread-In Gunite Jets

| Internal Type | 5-Scallop | 6- Spoke |
|---------------|-----------|----------------|
| Directional | 229-7920 | 229-4309DSG-TT |
| Roto | 229-7930 | 229-4319DSG-TT |
| Twin Roto | 229-7950 | 229-4329DSG-TT |
| Massage | 229-0030 | 229-4339DSG-TT |

Poly Storm Thread-In Gunite Jets

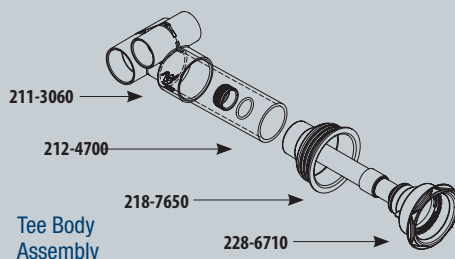
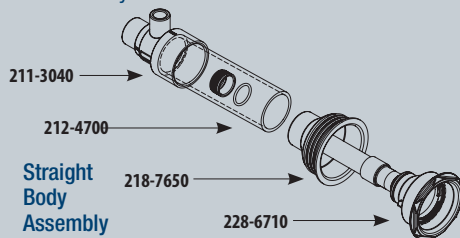
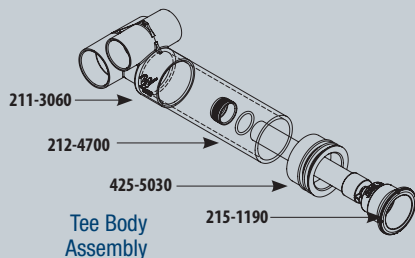
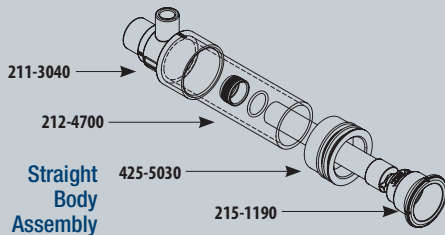
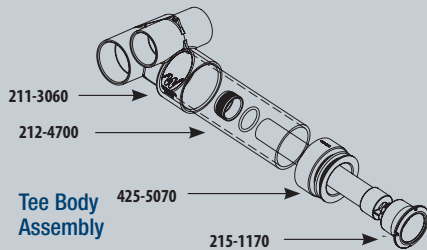
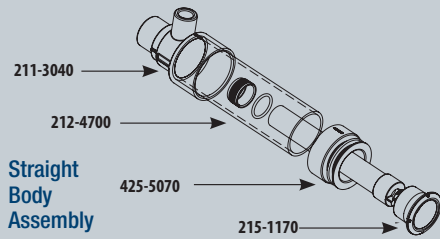
| Internal Type | 5-Scallop | 6- Spoke |
|---------------|-----------|----------------|
| Directional | 229-8050 | 229-8599DSG-TT |
| Roto | 229-8010 | 229-8579DSG-TT |
| Twin Roto | 229-8120 | 229-8589DSG-TT |
| Massage | 229-8030 | 229-8519DSG-TT |

Power Storm Thread-In Gunite Jets

| Internal Type | 5-Scallop | 6- Spoke |
|---------------|-----------|-----------------|
| Directional | 229-7630G | 229-7579GDSG-TT |
| Roto | 229-7600G | 229-7559GDSG-TT |
| Twin Roto | 229-7610G | 229-7569GDSG-TT |
| Massage | 229-7740G | 229-7599GDSG-TT |

Part Number shown indicate White. Jets are also available in various colors. 0 - White, 1 - Black, 7 - Gray

Body Assemblies



* 1" and 2 1/2" pipe not included

| Mini Storm Thread-In Gunite Body Assemblies | | | |
|---|----------|----------|----------|
| Description | White | Black | Gray |
| Straight Body Assy - 1" S Air x 1 1/2" S Water - Niche | 229-1000 | 229-1001 | 229-1007 |
| Tee Body Assy - 1 1/2" S Air x 2" S Water - Threaded Ring and Niche | 229-1010 | 229-1011 | 229-1017 |
| Straight Body Only | 211-3040 | NA | NA |
| Tee Body Only | 211-3050 | NA | NA |
| Threaded Retainer Ring with O-Ring | 212-4700 | NA | NA |
| Mini Gunite Jet Niche Adapter | 425-5070 | 425-5071 | 425-5077 |
| Wall Fitting | 215-1170 | 215-1171 | 215-1177 |

| Poly Storm Thread-In Gunite Body Assemblies | | | |
|---|----------|----------|----------|
| Description | White | Black | Gray |
| Straight Body Assy - 1" S Air x 1 1/2" S Water - Niche | 229-1100 | 229-1001 | 229-1007 |
| Tee Body Assy - 1 1/2" S Air x 2" S Water - Threaded Ring and Niche | 229-1110 | 229-1011 | 229-1017 |
| Straight Body Only | 211-3040 | NA | NA |
| Tee Body Only | 211-3060 | NA | NA |
| Threaded Retainer Ring with O-Ring | 212-4700 | NA | NA |
| Poly Gunite Jet Niche Adapter | 425-5030 | NA | NA |
| Wall Fitting | 215-1190 | 215-1191 | 215-1197 |

| Power Storm Thread-In Gunite Body Assemblies | | | |
|---|----------|----------|----------|
| Description | White | Black | Gray |
| Straight Body Assy - 1" S Air x 1 1/2" S Water - Niche | 229-1200 | NA | NA |
| Tee Body Assy - 1 1/2" S Air x 2" S Water - Threaded Ring and Niche | 229-1210 | NA | NA |
| Straight Body Only | 211-3040 | NA | NA |
| Tee Body Only | 211-3060 | NA | NA |
| Threaded Retainer Ring with O-Ring | 212-4700 | NA | NA |
| Poly Gunite Jet Niche Adapter | 218-7650 | 218-7651 | 218-7657 |
| Wall Fitting | 215-1190 | NA | NA |

Aqua Shapes®

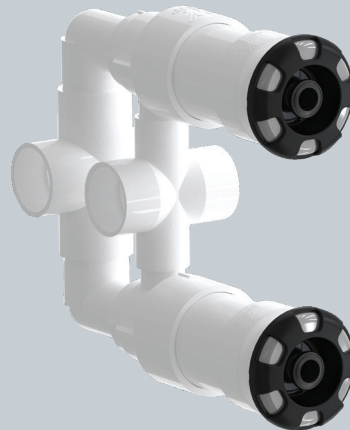
3,2,1 Jet Manifold

Features:

- Pre-plumbed air and water connections
- Comes with 3 of the 6-spoke poly gunite jets
- 2" spigot fitting for water
- 1½" S fitting for air
- Saves time and money
- Available in 1 jet seat gunite, 2 jet seat gunite and 3 jet seat gunite



1-Jet Manifold
210-3550G

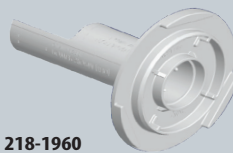


2-Jet Manifold
9" 210-3560G
7" 210-3540G



3-Jet Manifold
9" 210-3510G
7" 210-3520G

Accessories



218-1960

Measuring Tool (sold separately)

3 Jet Manifold:

Patent US937714

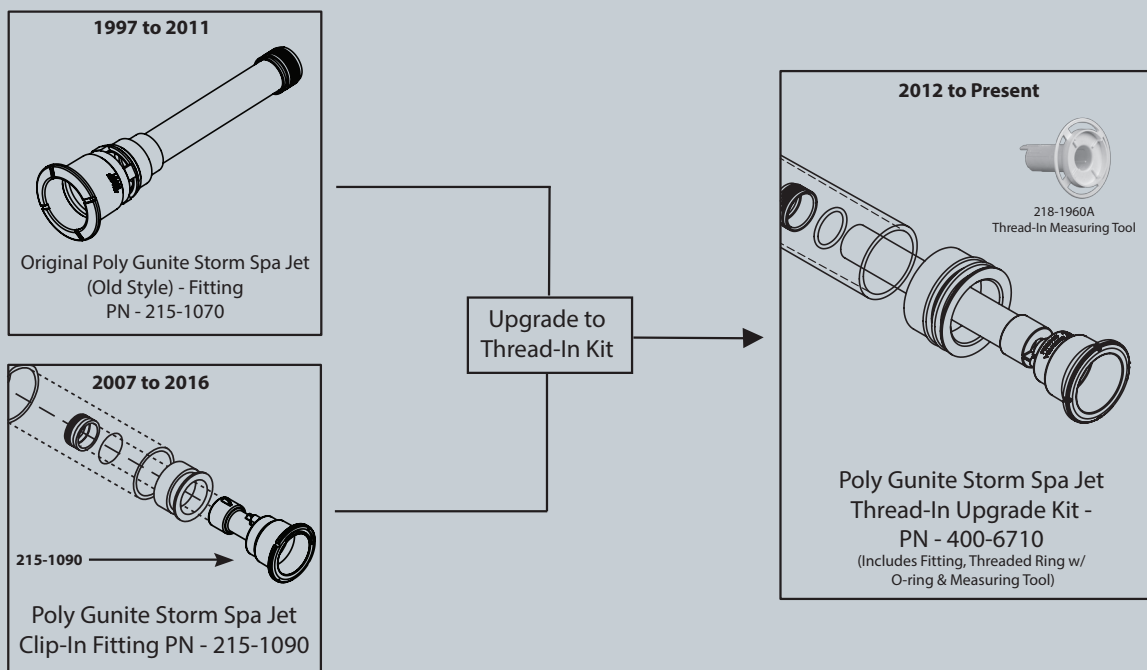
1 & 2 Jet Manifolds:

Patent Pending



Upgrade Kits for Poly/Power Gunite Jets

Gunite Storm Poly Jet - Thread-In Upgrade Kit



Gunite Storm Power Jet - Thread-In Upgrade Kit

