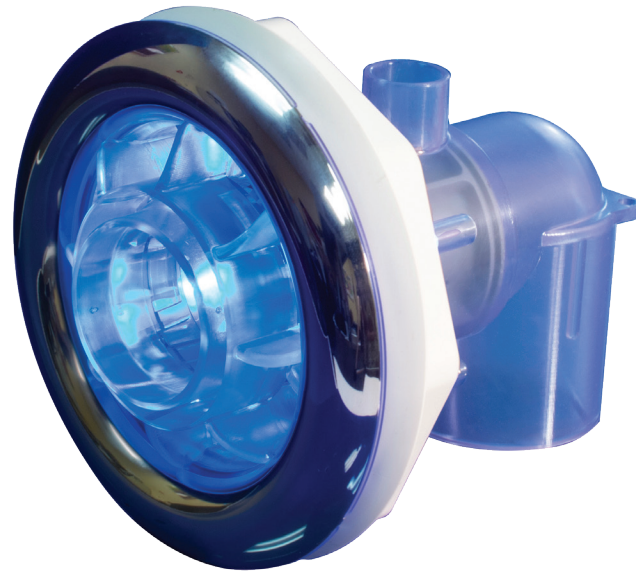


# POWER Stream Swim Jet

Introducing Waterway's Power Stream Swim Jet... with a range of added features to improve performance and ease of installation!

## Features:

- Through-wall jet installation
- 2" input for optimum performance
- 1" and 1.5" equiv. nozzle sizes
- Nozzles can easily be exchanged
- Sixteen entraining ports for improved performance
- Four Glo ports for LED lighting

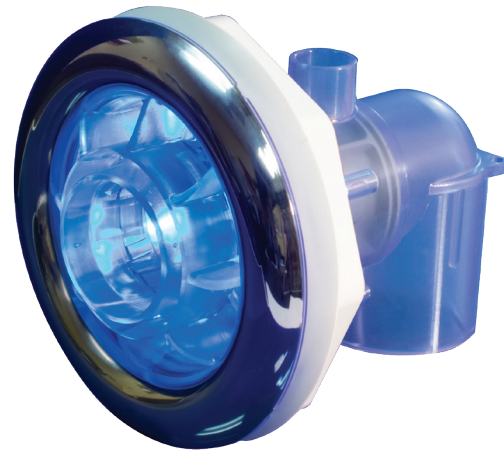
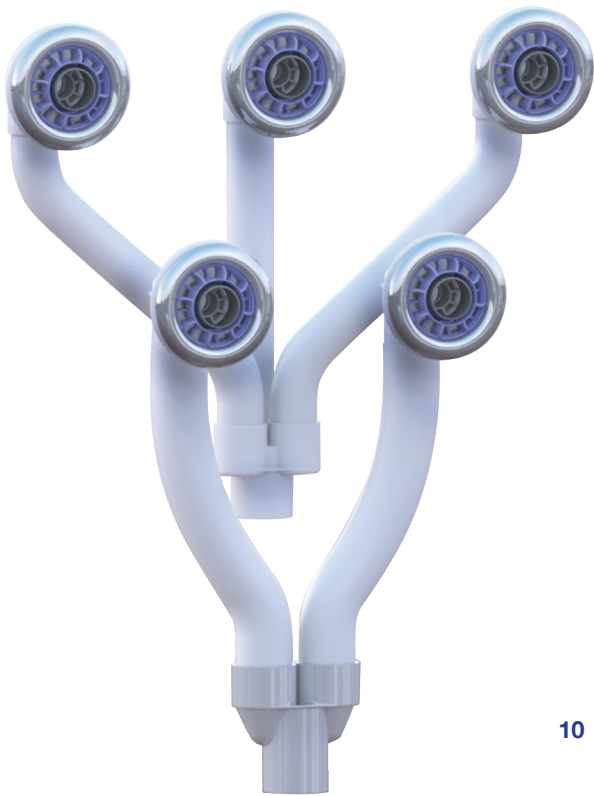


Waterway's two and three port distributor manifolds allow for easy plumbing of 4, 5 and 6 jet swim systems.

Part #	Description
210-0828S	Power Stream Swim Jet 1 3/8" Nozzle with Clear/Metal
210-0838S	Power Stream Swim Jet 1" Nozzle with Clear/Metal
672-9540	Distributor Manifold 2.5" Slip x (3) 2" Slips
672-8050	Wye Manifold 2.5" Slip x 2.5" Slip x 2.5" Slip

# POWER Stream Swim Jet

The Power Stream Swim Jets allow for easy installation of a variety of different swim configurations. Shown is one example of a five jet swim system plumbed for a two pump system.



## POWER STREAM JET FLOW CURVE

