



**1" S AROMA THERAPY TEE ASSEMBLY  
SMOOTH 5-SCALLOP**

Part No.	Bulk Qty.
670-2850-CW	60
670-2850-BC	60
670-2850-B0	60
670-2850-PC	60
670-2850-BN	60
670-2850-OB	60
670-2850-0BB	60



**3.5" FRONT ACCESS  
LIGHT ASSEMBLY**

Part No.	Bulk Qty.
630-6008NI	60



**2" FRONT ACCESS  
LIGHT ASSEMBLY**

Part No.	Bulk Qty.
630-6220T	80

**Without Tool**

Part No.	Bulk Qty.
630-6220	80



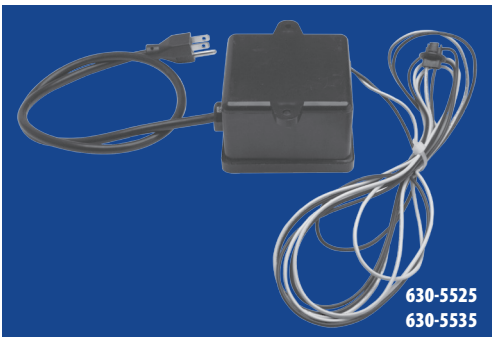
**BLUE & RED LENS COVERS  
FOR 3" & 3.5" LIGHTS**

Part No.	Bulk Qty.
630-0005	75



**LED CUP HOLDER  
LIGHT LENS**

Part No.	Bulk Qty.
630-0038	150

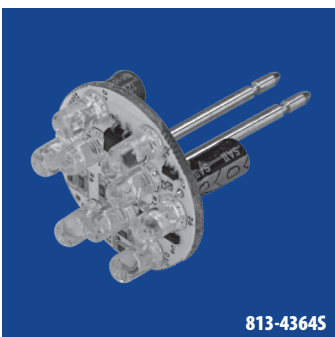


**POWER SUPPLY WITH  
CORD AND HARNESS**

Part No.	Bulk Qty.
630-5525	20

**POWER SUPPLY WITH  
AIR SWITCH, CORD, &  
HARNESS**

Part No.	Bulk Qty.
630-5535	20



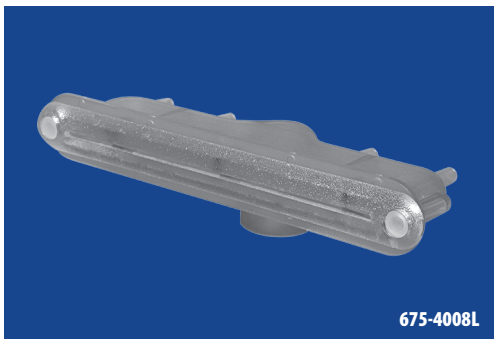
**9-LED LIGHT WITH  
10 EFFECTS**

Part No.	Bulk Qty.
813-4364S	60



**12 V BULB**

Part No.	Bulk Qty.
813-4370	10



675-4008L

### 6" AQUA FALL

6" AQUA FALL	
Part No.	Bulk Qty.
675-4000	50
675-4000S	50

6" LED AQUA FALL	
Part No.	Bulk Qty.
675-4008L	50

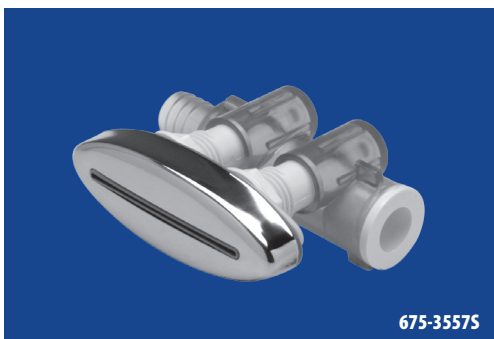


675-3507

### 3 1/2" CASCADE (2) 3/4" RB

3 1/2" CASCADE	
Part No.	Bulk Qty.
675-3500	20
675-3500S	20

3 1/2" LED CASCADE	
Part No.	Bulk Qty.
675-3508L	60
675-3508LS	60

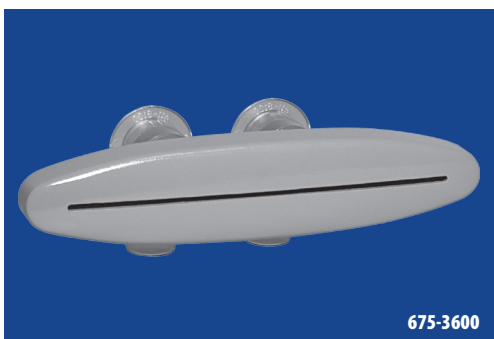


675-3557S

### 3 1/2" CASCADE WITH MANIFOLD (2) 3/4" RB

3 1/2" CASCADE	
Part No.	Bulk Qty.
675-3550	100
675-3550S	100

3 1/2" LED CASCADE	
Part No.	Bulk Qty.
675-3558L	25
675-3558LS	25

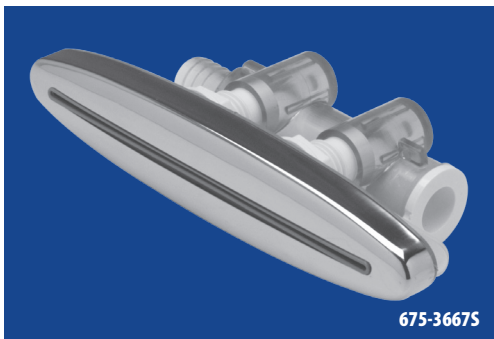


675-3600

### 7" CASCADE (2) 3/4" RB

7" CASCADE	
Part No.	Bulk Qty.
675-3600	20
675-3600S	20

7" LED CASCADE	
Part No.	Bulk Qty.
675-3608L	20
675-3608LS	20



675-3667S

### 7" CASCADE WITH MANIFOLD (2) 3/4" RB

7" CASCADE	
Part No.	Bulk Qty.
675-3660	100
675-3660S	100

7" LED CASCADE	
Part No.	Bulk Qty.
675-3668L	20
675-3668LS	20



885-100B1S

## TEE HEATERS

**120V 12.5 AMP**

Part No.	Size.	Qty.
<b>885-100B1S</b>	1" S x 1" S	1
<b>885-100B3S</b>	1" SPG x 1" SPG	1



885-101D2S

## INLINE VACUUM HEATERS

**120V 12.5 AMP**

Part No.	Size.	Qty.
<b>885-101D2S</b>	1.5" S x 1.5" S	1



885-101B4S

## INLINE PRESSURE HEATERS

**120V 12.5 AMP**

Part No.	Size.	Qty.
<b>885-101B1S</b>	1.5" S x 1.5" S	1
<b>885-101B2S</b>	1" S x 1" S	1
<b>885-101B4S</b>	1" SPG x 1" S	1

## ALL HEATERS

- **5.5"**
- **120 V**
- **60 Hz**
- **1500 W**
- **12.5 Amp**



850-5000

## OZONE KIT

**UNIVERSAL OZONE KIT**

Part No.	Description	Qty.
<b>850-5000</b>	Complete Kit	1
<b>850-5010</b>	Generator Kit Only	1
<b>815-5010</b>	Air Switch Box	1