

Original Deluxe Poly Jet Internal Installation and Winterization



Original Deluxe Poly Jet Internal



Escutcheon Extended completely



Escutcheon Extended ready to install into the Body



Inserted into Body



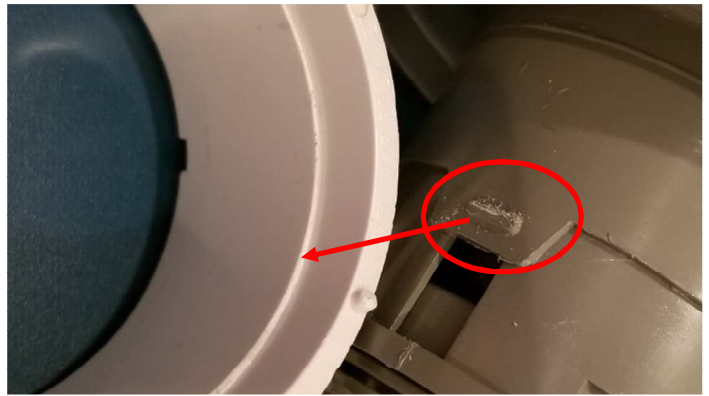
Hold Escutcheon out and push barrel into the Body.
With Escutcheon thread barrel into Body



Hold Escutcheon and continue to thread barrel until
snug



Gently push the Escutcheon against the spa wall until it snaps into the body



The tabs on the side of the escutcheon will lock into the lip on the side of the bulkhead to the body.



Rotating the Escutcheon allows a low to high Flow



By turning the valve OFF or...



ON

To Winterize pry the Escutcheon out from side to side until the tabs release.



Then un-thread Internal out of Body. Blow Jets out and install a #10 Expansion plug to Winterize.

