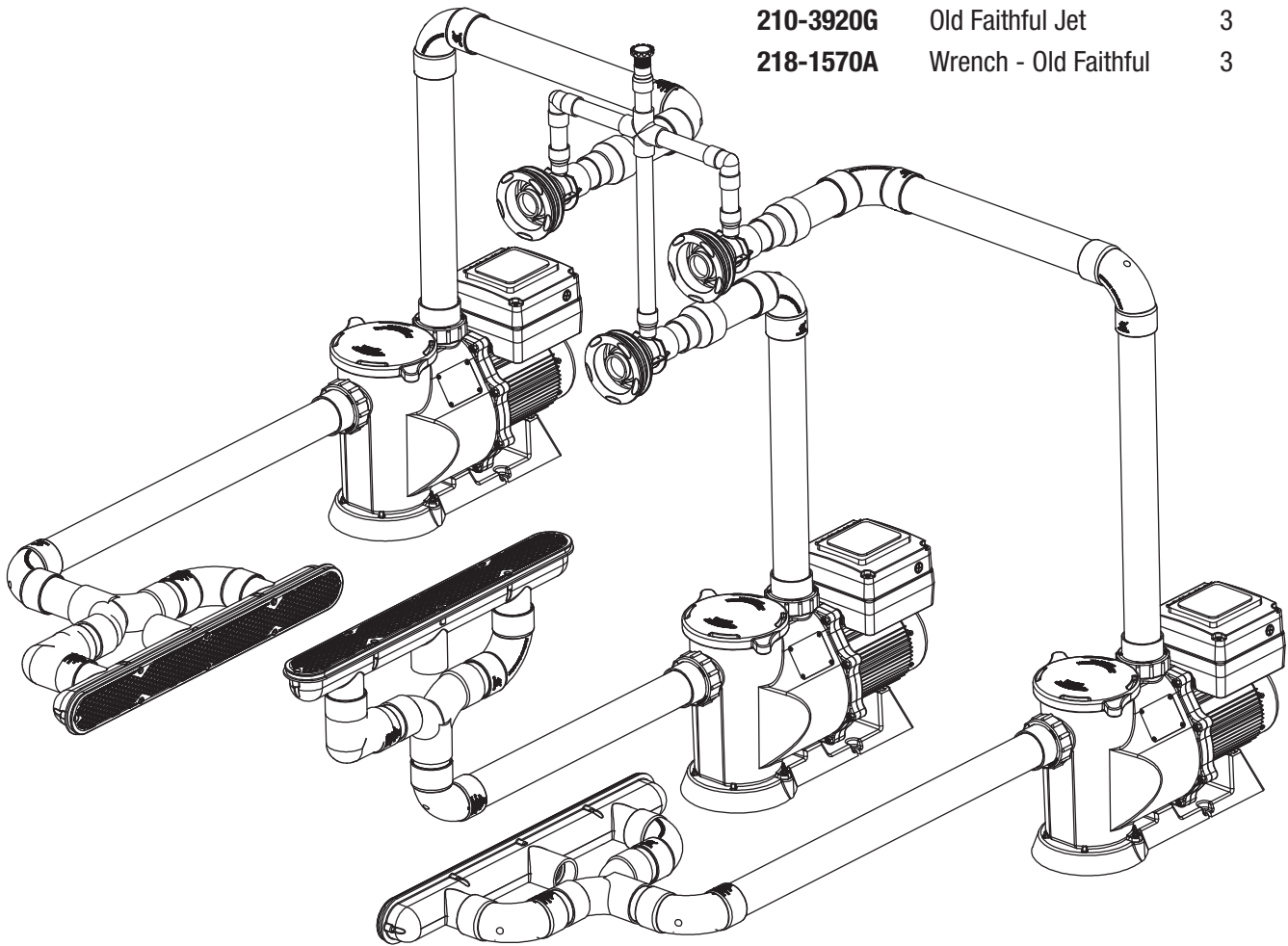


INSTALLATION INSTRUCTIONS

1. Use Three 2.7 Horsepower Variable Speed PD-270SVL.
2. Each jet can have its own designated air line with a Hartford loop. Air can also be plumbed through a manifold to control all three jets.

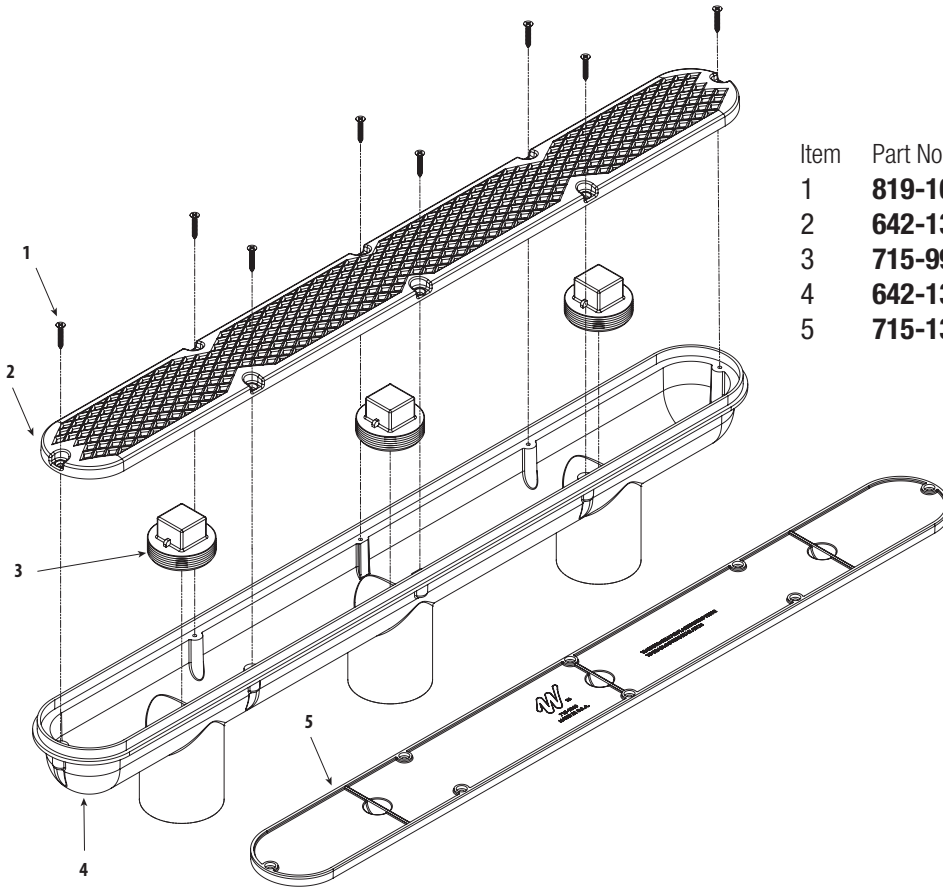
SYSTEM COMPONENTS

Part No.	Description	Quantity
PD-270A	2.7 THP Variable Speed SVL Pump	3
400-5111	2.5" Union	2
640-1360 V	Ultra Strip Drain Diamond Style	3
411-9150	2.5" S Sweep Ell	14
413-2320	2.5" S Sanitary Tee	3
660-3400	Air Control A Style	1
210-3920G	Old Faithful Jet	3
218-1570A	Wrench - Old Faithful	3



Adapters will be needed: Strip drains, Pump, and Tee are 2.5" Schedule 40 PVC.
Sweeps are 3" S, Schedule 40 PVC, and each jet is 2" S, Schedule 40 PVC.

640-136x V Diamond Strip Drain Components - Concrete



Item	Part No.	Description	Quantity
1	819-1031	3HP High Head Pump	8
2	642-134x V	32" Diamond Pattern Grate	1
3	715-9910	2" Pipe Plug	3
4	642-1320	32" 3-Port Plaster Sump	1
5	715-1360	32" Plaster Cover/Plug	1

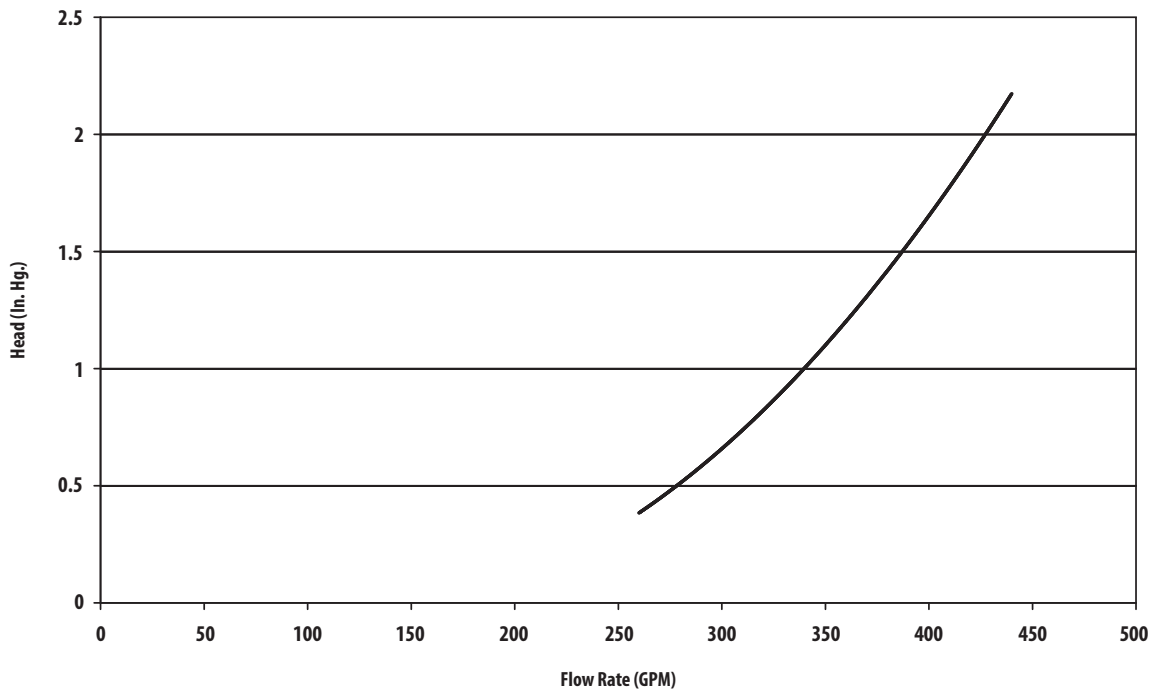


WARNING: The Plaster Cover/ Plug shall be removed prior to assembly of the Grate.

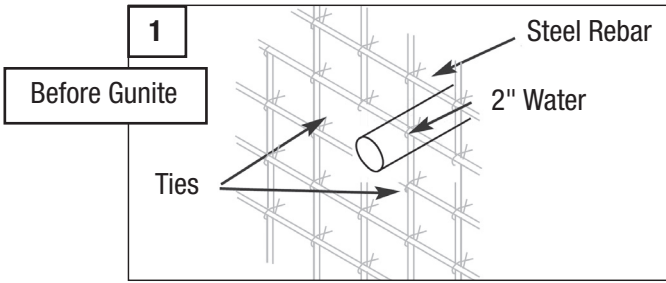


Hand tighten the screws using a Phillips screw driver. **DO NOT** use electrical or pneumatic tools for tightening the screws.

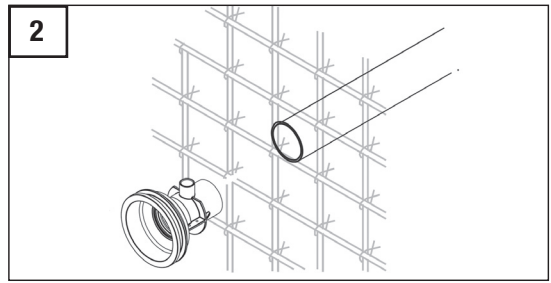
DIAMOND STRIP DRAIN HEAD LOSS CURVE



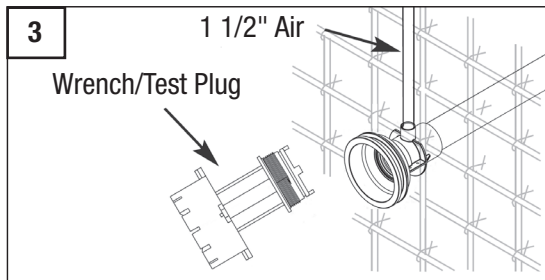
OLD FAITHFUL STRAIGHT BODY GUNITE INSTALLATION INSTRUCTIONS



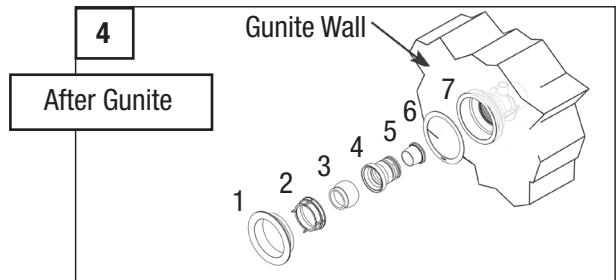
1. Position 2" pipe at the desired location for each jet.



2. Estimate needed length of 2" PVC pipe by thickness of wall and length of jet body (5.87").



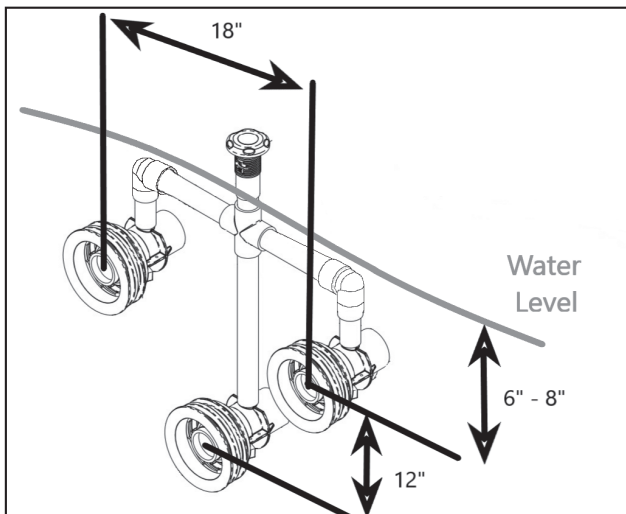
3. Glue the jet body onto the end of the pipe and 1/2" PVC for air line (3 3/4" behind face) for pressure test before guniting. Use Wrench to plug the body for pressure test.



4. After guniting, install the internal components of the jet. Improper re-assembly will inhibit function of the jet.

NOTE: Install 0.925" nozzle in top jets, install 1.5" nozzle in bottom jet.

SUGGESTED LAYOUT FOR 3 OLD FAITHFUL JETS

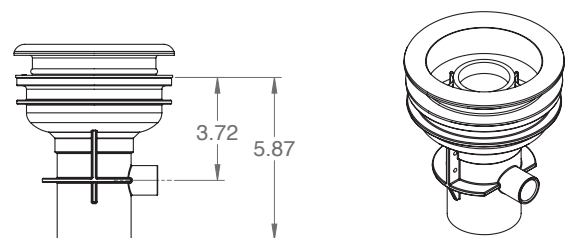


NOTE: Air from all three jets can be plumbed together.

OLD FAITHFUL PART NUMBERS

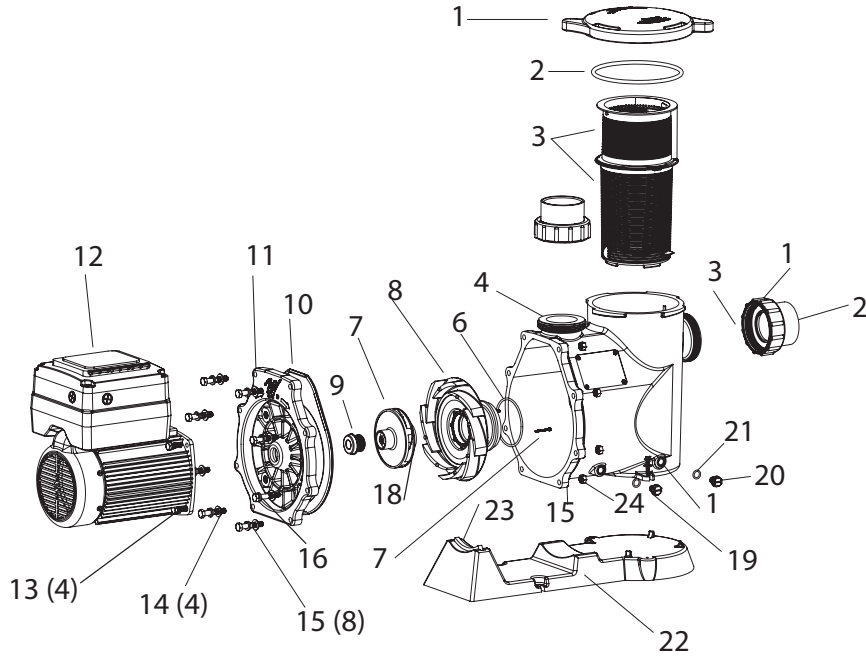
Part No.	Description
1 215-7340G	Wall Fitting, Old Faithful
2 218-7350	Front Cage, Old Faithful
3 213-7300	Eyeball, Old Faithful
4 217-7310	Air Nozzle, Old Faithful
5 217-7320	Nozzle, Water 1.5", Old Faithful
5 217-7300	Nozzle, Water 0.925", Old Faithful
6 711-7300	Gasket, Old Faithful
7 211-0150G	Straight Body, Old Faithful

OLD FAITHFUL STRAIGHT BODY DIMENSIONS



ELECTRICAL GUIDE

MOTOR HP	VOLTS	CIRCUIT BREAKING RATING (AMPS)	BRANCH FUSETRON RATING (AMPS)	RECOMMENDED WIRE SIZE 0-50'
3	230	20	20	No. 12



POWER DEFENDER 270 SVL PUMP REPLACEMENT PARTS

Item	Part No.	Description	Item	Part No.	Description
1	511-1310	Lid	12	MC-4-04	PD-270 Motor
2	805-0439	Lid O-Ring	13	819-0011	Screw - 3/8" - 16 x 1/8" (4)
3	319-1310	Basket Assembly	14	820-0017	Flat Washer (12)
4	315-1300	Housing	15	820-0016	Hex Nut Ea.
5	310-3300	Diffuser - High-Flow	16	819-4360	Screw Head Left-Hand
	310-7470	Diffuser - High-Pressure	17	711-4300	SVL Gasket for Left Hand Screw
6	805-0238	Diffuser O-Ring	18	819-0013	Screw (2) Ea.
7	819-0018	Diffuser Screw	19	820-0018	Flat Washer (2) Ea.
8	310-3680	SVL56E-130 Impeller Assembly - High-Flow	20	715-1201	Drain Plug
9	319-3110B	Pump Seal Set - Viton	21	805-0112	Drain Plug O-Ring
10	311-1400	Faceplate	22	672-1300	SVL56 Base
11	711-4290	Faceplate Gasket	23	672-1310	Motor Support
			24	819-0016	Screw (8)

PUMP UNION ASSEMBLY

1	415-4211	2 1/2" Union Nut
2	417-5971	2" Tailpiece
	417-6001	2 1/2" Tailpiece
3	711-6020	Gasket

400-5111 2 1/2" Union x 2" Socket Tailpiece

2 of each union are included with pump



Designed,
Engineered &
Manufactured
in the USA.



2200 East Sturgis Road, Oxnard CA 93030 • Phone 805.981.0262 • Fax 805.981.9403

www.waterwayplastics.com • waterway@waterwayplastics.com