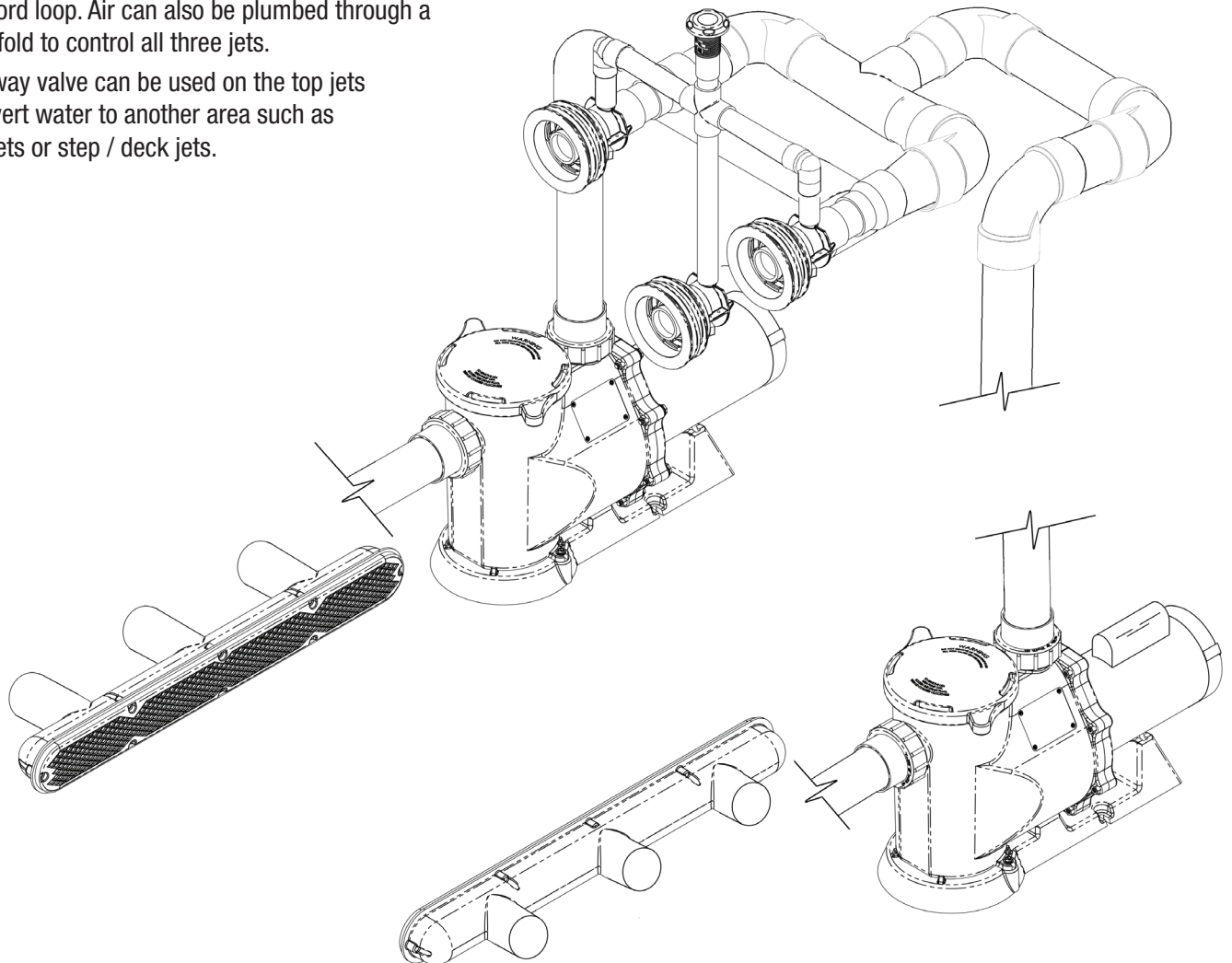


INSTALLATION INSTRUCTIONS

1. Use (2) 3 Horsepower SVL56 Pumps. P/N SVL56E-130.
2. Suction Line: 3"
3. Line from Pump with Swim Jet: 3"
4. Each pump requires one Strip Drain for safety.
All drains can be linked together for added safety.
5. Two top jets should have 0.925 orifice for best results.
Required flow of 90 GPM per jet.
6. Typical installations will use two pumps for all three jets.
It is possible to use three pumps; one for each jet.
7. Each jet can have its own designated air line with a Hartford loop. Air can also be plumbed through a manifold to control all three jets.
8. A 3-way valve can be used on the top jets to divert water to another area such as spa jets or step / deck jets.

SYSTEM COMPONENTS

Part No.	Description	Quantity
SVL56E-130	3HP High Head Pump	2
640-13XX V	36" Strip Drain	2
411-9200	3" S Sweep Ell	7
413-2300	2.5" S Sanitary Tee	1
660-3400	Air Control	3
210-3920G	Old Faithful Jet	3
218-1570	Wrench - Old Faithful	3

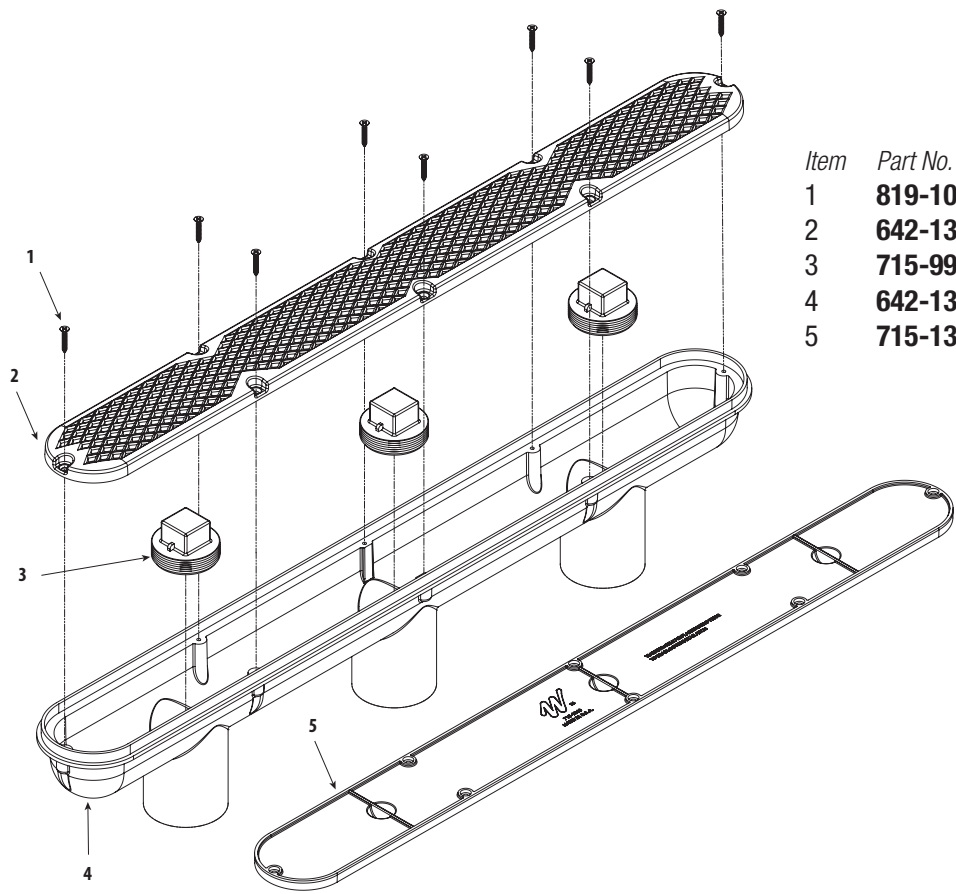


Adapters will be needed: Strip drains, Pump, and Tee are 2.5" Schedule 40 PVC.
Sweeps are 3" S, Schedule 40 PVC, and each jet is 2" S, Schedule 40 PVC.

This is general information - for more specifics, please refer to a pool designer.

640-136x V Diamond Strip Drain

Components - Concrete



Item	Part No.	Description	Quantity
1	819-1031	3HP High Head Pump	8
2	642-134x V	32" Diamond Pattern Grate	1
3	715-9910	2" Pipe Plug	3
4	642-1320	32" 3-Port Plaster Sump	1
5	715-1360	32" Plaster Cover/Plug	1

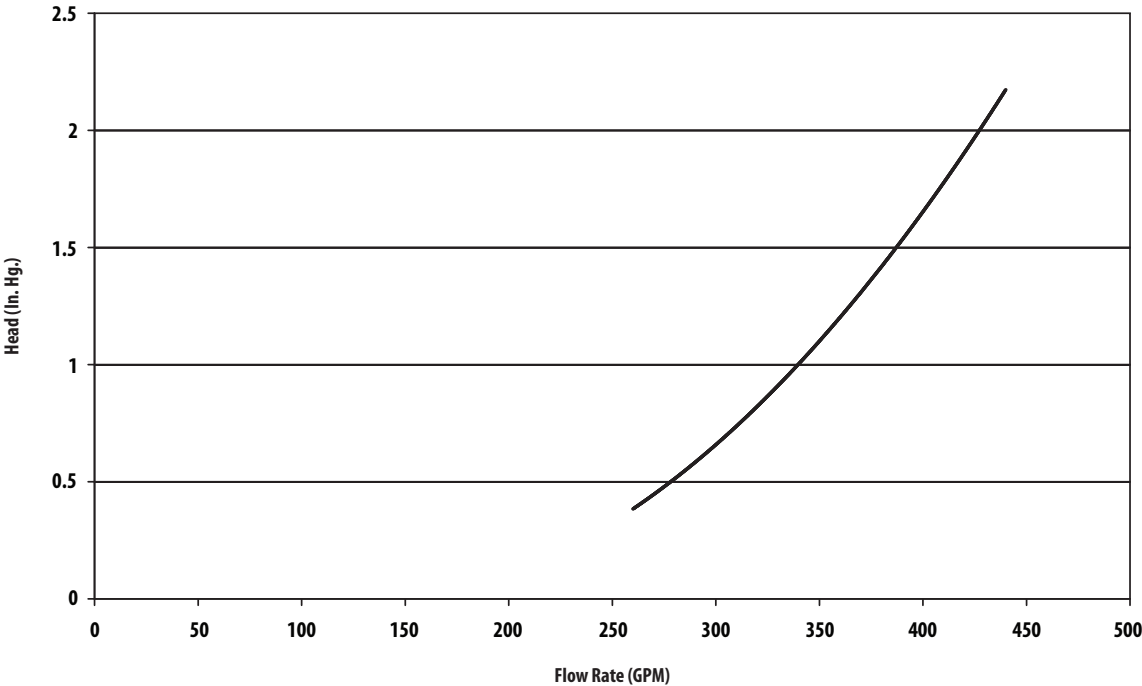


WARNING: The Plaster Cover/ Plug shall be removed prior to assembly of the Grate.

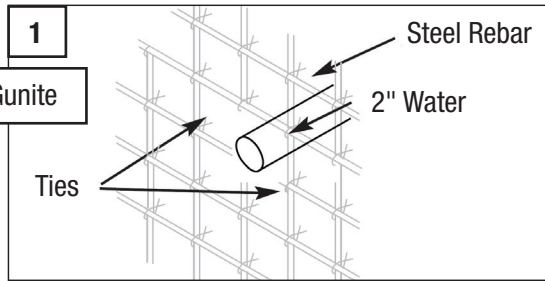


Hand tighten the screws using a Phillips screw driver. **DO NOT** use electrical or pneumatic tools for tightening the screws.

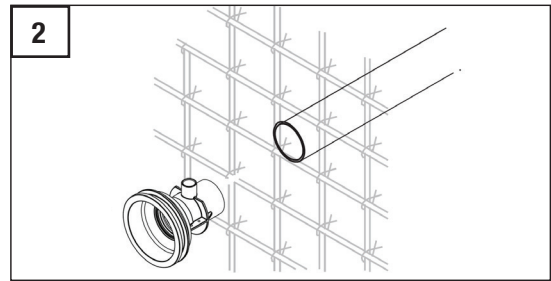
DIAMOND STRIP DRAIN HEAD LOSS CURVE



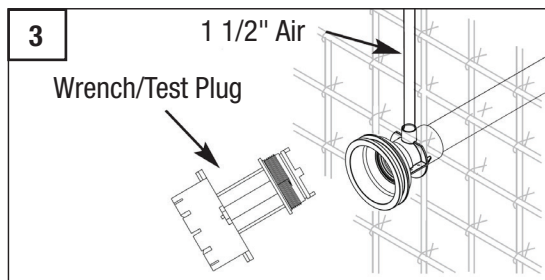
OLD FAITHFUL STRAIGHT BODY GUNITE INSTALLATION INSTRUCTIONS



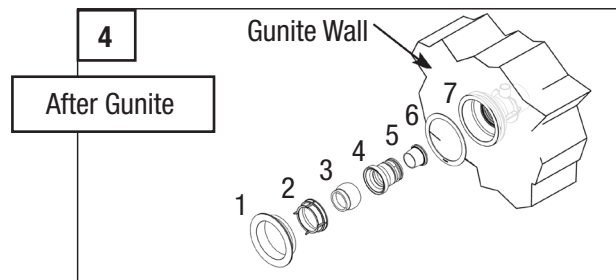
1. Position 2" pipe at the desired location for each jet.



2. Estimate needed length of 2" PVC pipe by thickness of wall and length of jet body (5.87").



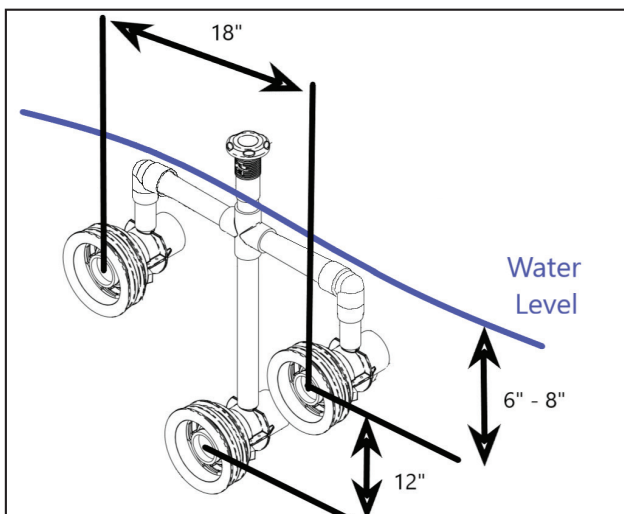
3. Glue the jet body onto the end of the pipe and 1/2" PVC for air line (3 3/4" behind face) for pressure test before guniting. Use Wrench to plug the body for pressure test.



4. After guniting, install the internal components of the jet. Improper re-assembly will inhibit function of the jet.

NOTE: Install 0.925" nozzle in top jets, install 1.5" nozzle in bottom jet.

SUGGESTED LAYOUT FOR 3 OLD FAITHFUL JETS

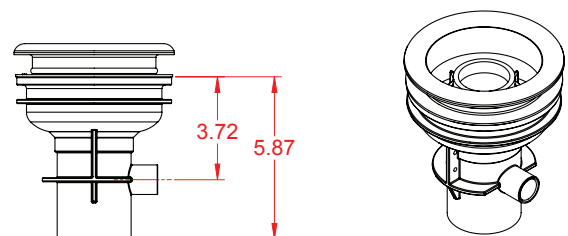


NOTE: Air from all three jets can be plumbed together.

OLD FAITHFUL PART NUMBERS

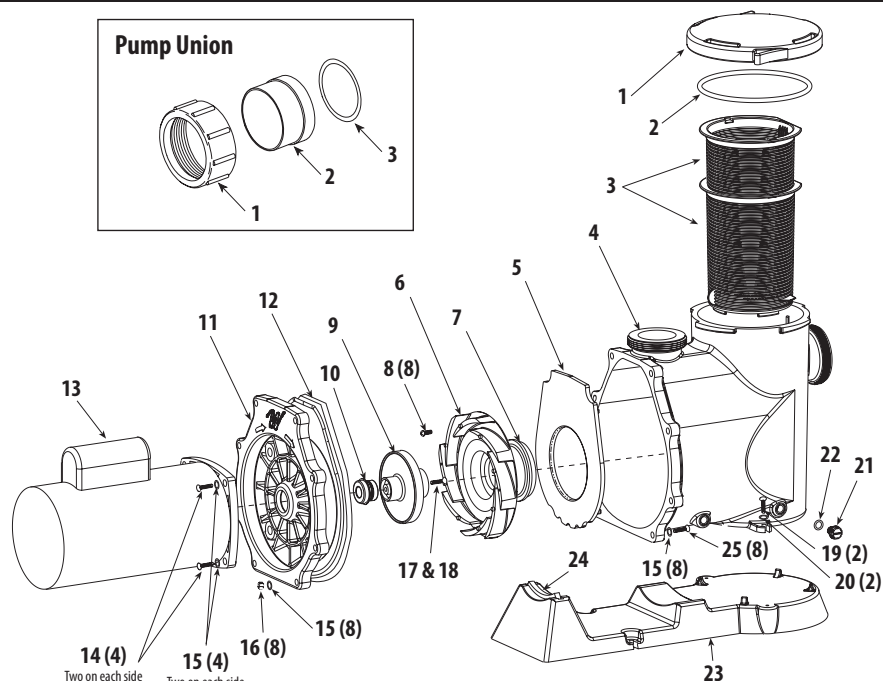
Part No.	Description
1 215-7340	Wall Fitting, Old Faithful
2 218-7350	Front Cage, Old Faithful
3 213-7300	Eyeball, Old Faithful
4 217-7310	Air Nozzle, Old Faithful
5 217-7320	Nozzle, Water 1.5", Old Faithful
5 217-7300	Nozzle, Water 0.925", Old Faithful
6 711-7300	Gasket, Old Faithful
7 211-0150	Straight Body, Old Faithful

OLD FAITHFUL STRAIGHT BODY DIMENSIONS



ELECTRICAL GUIDE

MOTOR HP	VOLTS	CIRCUIT BREAKING RATING (AMPS)	BRANCH FUSETRON RATING (AMPS)	RECOMMENDED WIRE SIZE 0-50'
3	230	20	20	No. 12



SVL56 PUMP REPLACEMENT PARTS

Item	Part No.	Description	Item	Part No.	Description
1	511-1310	Lid	13	3511450	SVL56E-130 Motor
2	805-0439	Lid O-Ring	14	819-0011	Screw - 3/8" - 16 x 1/8" (4)
3	319-1310	Basket Assembly	15	820-0017	Flat Washer (12)
4	315-1300	Housing	16	820-0016	Hex Nut Ea.
5	319-1260	Diffuser Plate - High-Pressure <i>(no plate used in High-Flow)</i>	17	819-4360	Screw Head Left-Hand
6	310-3300	Diffuser - High-Flow	18	711-4300	SVL Gasket for Left Hand Screw
	310-7470	Diffuser - High-Pressure	19	819-0013	Screw (2) Ea.
7	805-0238	Diffuser O-Ring	20	820-0018	Flat Washer (2) Ea.
8	819-0018	Diffuser Screw	21	715-1201	Drain Plug
9	310-3680	SVL56E-130 Impeller Assembly - High-Flow	22	805-0112	Drain Plug O-Ring
10	319-3110B	Pump Seal Set - Viton	23	672-1300	SVL56 Base
11	311-1400	Faceplate	24	672-1310	Motor Support
12	711-4290	Faceplate Gasket	25	819-0016	Screw (8)

PUMP UNION ASSEMBLY

1	415-4211	2 ½" Union Nut
2	417-5971	2" Tailpiece
	417-6001	2 ½" Tailpiece
3	711-6020	Gasket

PUMP UNION REPLACEMENT PARTS

400-6021B	2 ½" Union x 2 ½" Socket
400-5971B	2 ½" Union x 2" Socket

2 of each union are included with pump



2200 East Sturgis Road, Oxnard CA 93030 • Phone 805.981.0262 • Fax 805.981.9403
www.waterwayplastics.com • waterway@waterwayplastics.com