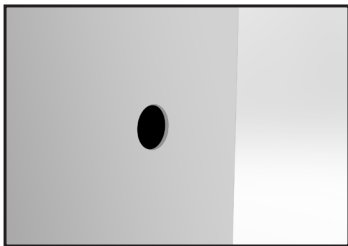
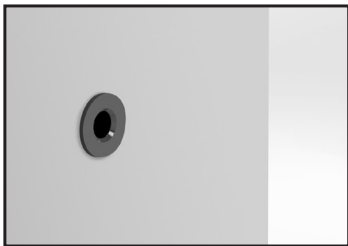


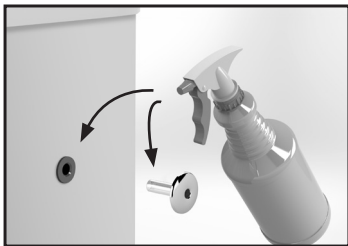
MICRO COMPONENT INSTALLATION INSTRUCTION SHEET



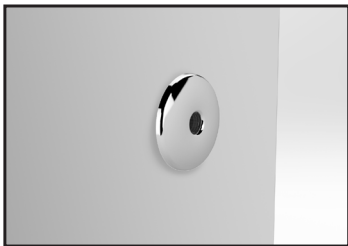
1. Locate a flat surface on the spa wall to install the Micro Component. Drill a 43/64" hole through the spa wall. Clean debris around the hole on the front and back.



2. Press in the EPDM grommet until the flange sets flush with the spa wall.



3. Lubricate the hole in the grommet and Micro Component with window cleaner or 1/2 liquid soap and water.



4. Press in the Micro component until it sits flush with the grommet. If necessary, tap the Micro component into place with a rubber mallet. Press in the LED light from the back where necessary.

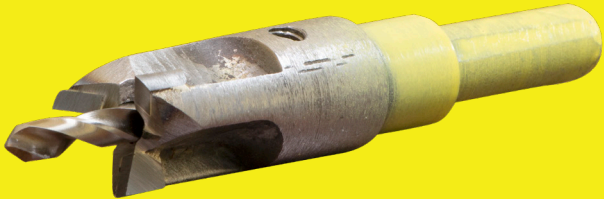


2200 East Sturgis Road, Oxnard, CA 93030 • Phone 805.981.0262 • Fax 805.981.9403
www.waterwayplastics.com • waterway@waterwayplastics.com

ADVISORY:

Do not use a regular twist drill.

**You must use a carbide 43/64" hole saw or
forstner bit, as shown in the picture below,
for consistent hole saw sizes.**



**Your Waterway Sales Representative will
have this tool available to assist you with
installation.**