

INSTRUCTION MANUAL

NEO 2100

Spa Control



NEO 2100 CONTROL PANEL

NEO 1100 CONTROL PANEL



2200 E. Sturgis Road, Oxnard, CA 93030 • Phone 805.981.0262 • Fax 805.981.9403
waterway@waterwayplastics.com • www.waterwayplastics.com



NEO 2100 SPA CONTROL SYSTEM

SAVE THIS MANUAL

PLEASE MAKE IT AVAILABLE TO ALL OTHER SPA USERS



WARNING! Qualified Technician Required for Service and Installation

BASIC INSTALLATION AND CONFIGURATION GUIDELINES

- Use minimum 6AWG copper conductors only.
- Readily accessible disconnecting means to be provided at time of installation.
- Permanently connected power supply.
- Connect only to a circuit protected by a Class A Ground Fault Circuit Interrupter (GFCI) or Residual Current Device (RCD) mounted at least 5' (1.52M) from the inside walls of the spa/hot tub and in line of sight from the equipment compartment.
- CSA enclosure: Type 2
- Refer to Wiring Diagram inside the cover of the control enclosure.
- Refer to Installation and Safety Instructions provided by the spa manufacturer.

WARNING! People with infectious diseases should not use a spa or hot tub.

WARNING! To avoid injury, exercise care when entering or exiting the spa or hot tub.

WARNING! Do not use a spa or hot tub immediately following strenuous exercise.

WARNING! Prolonged immersion in a spa or hot tub may be injurious to your health.

WARNING! Maintain water chemistry in accordance with the Manufacturers instructions.

WARNING! The equipment and controls shall be located not less than 1.5 meters horizontally from the spa or hot tub.

WARNING! GFCI OR RCD PROTECTION.

The Owner should test and reset the GFCI or RCD on a regular basis to verify its function.

CAUTION! CSA COMPLIANCE

- Test the ground fault circuit interrupter before each use of the spa.
- Read the instruction manual.
- Adequate drainage must be provided if the equipment is to be installed in a pit.
- For use only within an enclosure rated CSA Enclosure 3.
- Connect only to a circuit protected by a Class A ground fault circuit interrupter or residual current device.
- To ensure continued protection against shock hazard, use only identical replacement parts when servicing.
- Install a suitably rated suction guard to match the maximum flow rate marked.

WARNING!

- Water temperature in excess of 100°F may be injurious to your health.
- Disconnect the electric power before servicing. Keep access door closed.

ATTENTION! CSA CONFORMITÉ

- Toujours vérifier l'efficacité du disjoncteur différentiel avant d'utiliser le bain.
- Lire la notice technique.
- Lorsque l'appareillage est installé dans une fosse, on doit assurer un drainage adéquat.
- Employer uniquement à l'intérieur d'une clôture CSA Enclosure 3.
- Connecter uniquement à un circuit protégé par un disjoncteur différentiel de Class A.
- Afin d'assurer une protection permanente contre le danger de choc électrique, lors de l'entretien employer seulement des pièces de rechange identiques.
- Les prises d'aspiration doivent être équipées de grilles convenant au débit maximal indiqué.

ADVERTISSEMENT!

- Des températures de l'eau supérieures à 38°C peuvent présenter un danger pour la santé.
- Déconnecter du circuit d'alimentation électrique avant l'entretien. Garder la porte fermée.



WARNING! SHOCK HAZARD! NO USER SERVICEABLE PARTS.

Do not attempt service of this control system. Contact your dealer or service organization for assistance. Follow all owner's manual power connection instructions. Installation must be performed by a licensed electrician and all grounding connections must be properly installed.



CAUTION! High voltage levels exist inside the control box and can cause injury or possibly electrocution. To prevent premature control failure do not hose down, flood or allow water to enter the control box.

WARRANTY

For product registration visit: www.waterwayplastics.com.

For Warranty questions or claims please contact point of purchase.



NEO 2100 CONTROL PANEL



NEO 1100 CONTROL PANEL

INSTRUCTIONS APPLY TO BOTH
NEO 2100 & NEO 1100 CONTROL PANEL
ICONS & FUNCTIONS



UP



LIGHT



DOWN



JET 1



MENU



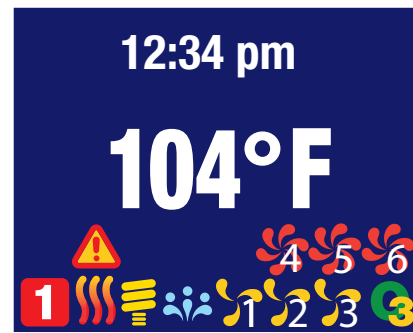
JET 2



RETURN



BLOWER



JET 6

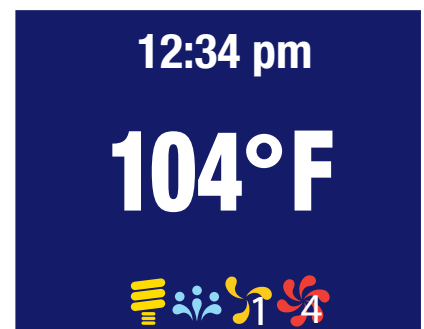
JET 5

JET 4

JET 1 JET 2 JET 3

MAIN SCREEN:

The main screen displays current time, water temperature, and status of the system accessories. The screen below from bottom, left to right indicates LIGHT ON, BLOWER ON, JET 1 at low speed, and JET 2 at high speed.



PRIMING MODE:

When power is ON, the system will enter priming mode with 'Priming Mode' displayed on the panel. In this mode, all devices such as JETS, BLOWERS or LIGHT are operable. JETS can be turned on and off to prime the pump. The system will exit Priming Mode and go to the MAIN display when the RETURN button is pushed, or after 4 minutes of inactivity.



SPA OPERATION:

Turn system accessories ON and OFF by pushing the button on the right side of panel (LIGHT, JET 1, THERAPY, JET 2...) These accessories have timeout defaults from the manufacturer and will turn OFF automatically after the time has expired. Default Timeout time for LIGHT is 60 minutes; THERAPY is 15 minutes; JET at low speed is 60 minutes; and JET at high speed is 15 minutes. The user can change these default times in "DEVICE TIMEOUT" setting menu.

MENU NAVIGATING:

- MENU: use to enter setting menu and sub-menu screens. For screens with several settable fields (example: DATE-TIME screen), use MENU button to navigate between different fields within the screen.
- UP and DOWN: use to navigate between different options or changing values of a field.
- RETURN: use to confirm the setting and goes back to previous screen.

SETTING TEMPERATURE:

To change water Set Temperature, use UP and DOWN buttons to set the desired temperature. The screen will display "SET TEMP" with the current set temperature. After 5 seconds without change to the set temperature, the screen will go back to the MAIN screen with the current water temperature displayed. Changing the Set Temperature will turn on a pump so that the controller will be able to get an accurate water temperature and determine if the water needs to be heated.



HEATER:

When the heater pump turns on the HEATER START-UP icon will appear if heat is needed. The Heater will turn on and the HEATER icon will appear after 5 minutes.

SELECTION ICONS:

 FILTER CYCLE 1

 FILTER CYCLE 2

 FILTER CYCLE 3

 FILTER CYCLE 4

 LIGHT ON

 HEATER ON

 HEATER START-UP

 ENERGY SAVING HEAT MODE

 VACATION HEAT MODE

 CLEANER CYCLE

 POLLING CYCLE

 TEMPERATURE LOCK

 PANEL LOCK

 OZONE ON

 JET ON LOW SPEED

 JET ON HIGH SPEED

 BLOWER ON

 SPECIAL TEMP SELECT

 OPTION

PANEL TIMEOUT:

If a user is in the Settings Menu and no button is pushed within 15 seconds, the screen will timeout. The current screen setting will be lost and the panel will revert back to the MAIN screen.

In MAIN screen, if no button is pushed within 60 minutes, all LED and LCD lights will turn off and the panel will go to sleep. Any button pushed will wake the panel, LED and LCD lights will turn back on and the panel will Poll for water temperature.

ENTER SETTING SCREENS:

Press MENU button to display a list of Setting screens.

Use UP and DOWN to navigate between various Setting screens.

Press MENU again to enter a particular Setting screen or press RETURN to go back to MAIN screen.

Rotate View
Special Temp
Heat Mode
Filter Cycles
Date-Time













Rotate View
Special Temp
Heat Mode
Filter Cycles
Date-Time

SETTINGS EXPLAINED:

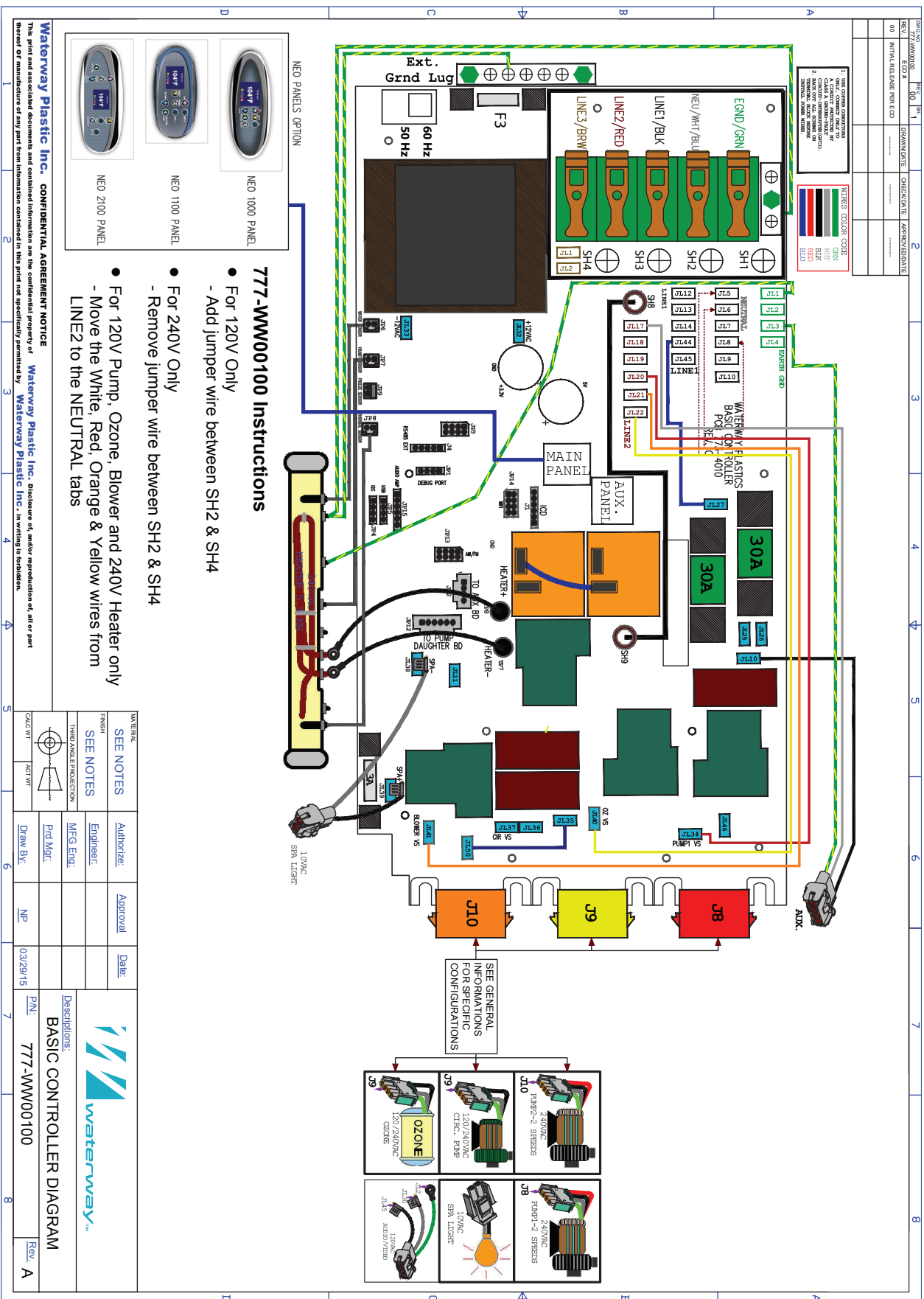
- **ROTATE VIEW:** Rotate the view 180 degrees. The UP and DOWN buttons also swap when rotated. • With ROTATE VIEW highlighted, press MENU to enter ROTATE VIEW setting. Use UP/DOWN to select desired setting and RETURN to confirm the setting and exit.
- **SPECIAL TEMP:** To temporarily heat spa to 105°F or 106°F once, and return to previous temperature setting. • With SPECIAL TEMP highlighted, press MENU to enter SPECIAL TEMP setting. Use UP/DOWN to select the desired setting and RETURN to confirm the setting and exit.
- **HEAT MODE:** select STANDARD heating mode (polls every Energy Interval) for most users or ENERGY SAVING mode (polls every other Energy Interval) or VACATION mode (set temp set to 60°F). • With HEAT MODE mode highlighted, press MENU to enter setting. Use UP/DOWN to select the desired setting and RETURN to confirm the setting and exit.
- **FILTER CYCLES:** set up filter cycle START TIME, DURATION, and DAY for filtering the spa. For FILTER CYCLE 1 and 2, if DURATION is set to ZERO the system will do a purge cycle at the start time setting. • With FILTER CYCLE highlighted, press MENU to enter. Select a FILTER CYCLE and press MENU again to enter the TIME/DURATION setting screen. In this screen, press MENU to move between HOURS, MINUTES and DAYS; use UP/DOWN to change the values and RETURN to exit and confirm the setting. FILTER CYCLES 3 & 4 by default are OFF. To set them, enter START TIME, DURATION and enable ALL DAYS or a specific day.
- **DATE-TIME:** set up Date and Time for the spa. • With DATE-TIME highlighted, press MENU to enter the DATE-TIME setting. In this screen, pressing MENU will move and highlight various fields that can change the setting; UP/DOWN to change the values and RETURN to confirm the setting and exit.
- **DEGREE F/C:** displays spa temperature in Celsius or Fahrenheit. This option is only available for 60 Hz countries. Unit automatically displays Celsius for 50 Hz. • With DEGREE F/C highlighted, press MENU to enter the DEGREE F/C setting. Use UP/DOWN to select the desired setting and RETURN to confirm the setting and exit.
- **TIME DISPLAY:** displays spa time in AM/PM or 24 hour time. • With TIME DISPLAY highlighted, press MENU to enter TIME DISPLAY setting. Use UP/DOWN to select the desired setting and RETURN to confirm the setting and exit.
- **GENERAL INFORMATION:** Displays general information for the spa. • With GENERAL INFORMATION highlighted, press MENU to enter the GENERAL INFORMATION menu. Use UP/DOWN to view different pages and information, press RETURN to exit the page. This screen will indicate which plug should be inserted to correct side connector.
- **LANGUAGES:** To select various languages for the spa display. • With LANGUAGES highlighted, press MENU to enter and select a specific language. Use UP/DOWN to select the desired setting and RETURN to confirm the setting and exit.
- **DEVICES TIMEOUT:** allows changes to timeout setting for various devices. LIGHT can be set to a maximum of 4 hours; PUMP in high speed and BLOWER can be set to a maximum of 1 hour; and PUMP in low speed can be set to a maximum of 2 hours. • With DEVICES TIMEOUT highlighted, press MENU to enter and select various devices setting. Use UP/DOWN to select the desired time setting and RETURN to confirm the setting and exit.
- **PANEL LOCK:** provides a choice to select PANEL for locking all panel buttons except MENU button; use TEMP to lock UP/DOWN button for changing set temperature; and MENU to lock MENU button (push and hold MENU button more than 15 seconds to unlock the Menu). • With PANEL LOCK highlighted, press MENU to enter PANEL setting. Use UP/DOWN to select the desired setting and RETURN to confirm the setting and exit.
- **NO HEAT TIME:** set the time frame for not allowing the heater to turn on. • With NO HEAT TIME highlighted, press MENU to enter the NO HEAT TIME setting. In this screen, pressing MENU will move and highlight various fields that can change the setting; use UP/DOWN to change the values and RETURN to confirm the setting and exit.
- **SERVICE MODE:** *only available for Authorized Dealers and Spa Manufacturer.*
- **DEMO MODE:** To demonstrate all device capabilities of the spa. • With DEMO MODE highlighted, press MENU to enter DEMO MODE setting. Use UP/DOWN to select the desired setting and RETURN to confirm the setting and exit.
- **SERENITY MODE:** Set to turn off all outputs and provide quiet while in the spa. • With SERENITY MODE highlighted, press MENU to enter and select a specific time. Use UP/DOWN to select the desired time setting. Press MENU again to navigate to EXIT/START. Select the desired option and RETURN to confirm the setting and exit.
- **ENERGY INTERVAL:** Only available for Non-Circ systems. • With ENERGY INTERVAL highlighted, press MENU to enter the ENERGY INTERVAL setting. Use UP/DOWN to select the desired minutes (15-240) and RETURN to confirm the setting and exit.
- **SILENT TIME (FUNCTIONS PAUSE):** Only available for Non-Circ systems. Set the time frame for no polling during night or other desired periods. • With SILENT TIME highlighted, press MENU to enter the SILENT TIME setting. In this screen, pressing MENU will move and highlight various fields that can change the setting; use UP/DOWN to change the values and RETURN to confirm the setting and exit.

- **CLEANER CYCLE:** Only available for Non-Circ systems. To turn on filtration after using the spa for short cleaning period. • With CLEANER CYCLE highlighted, press MENU to enter and select a specific duration. Use UP/DOWN to select the desired time setting. Press Menu again to navigate to Exit/Start. Select the desired option and RETURN to confirm the setting and exit.
- **BLUETOOTH:** Only available with Bluetooth module in the system. To use the control panel and play music from mobile devices. • With BLUETOOTH highlighted, press MENU to enter BLUETOOTH menu. In this screen, use UP/DOWN to select an option and MENU will execute or enter the selected option. Press RETURN to exit BLUETOOTH menu.
- **RESET WI-FI:** Only available with Wi-Fi module in the system. This is used to reset Wi-Fi module. • With RESET Wi-Fi highlighted, press MENU to enter. Use UP/DOWN to select the desired setting and RETURN to confirm the setting and exit.
- **OPTION:** Only available for specific configurations. When assigned the button on the panel will turn OPTION on and off.
- **OPTION TIMER:** Only available for specific configurations. When a configuration with Option is used, a timer can be set. Press MENU, select 'SERVICE MODE', use UP/DOWN to select 'OPTION TIMER', use UP/DOWN to change selection from 'none' to 'option1', then press RETURN to save the setting and exit, press RETURN again to go to the main menu. Press DOWN to select 'Option Timer', press MENU to select 'Option Timer'. Set a start time and duration for OPTION, the maximum duration is 23 hours, 45 minutes. Press UP/DOWN to change values, MENU to select a field, and RETURN to exit and confirm the setting.

ERROR SCREENS:

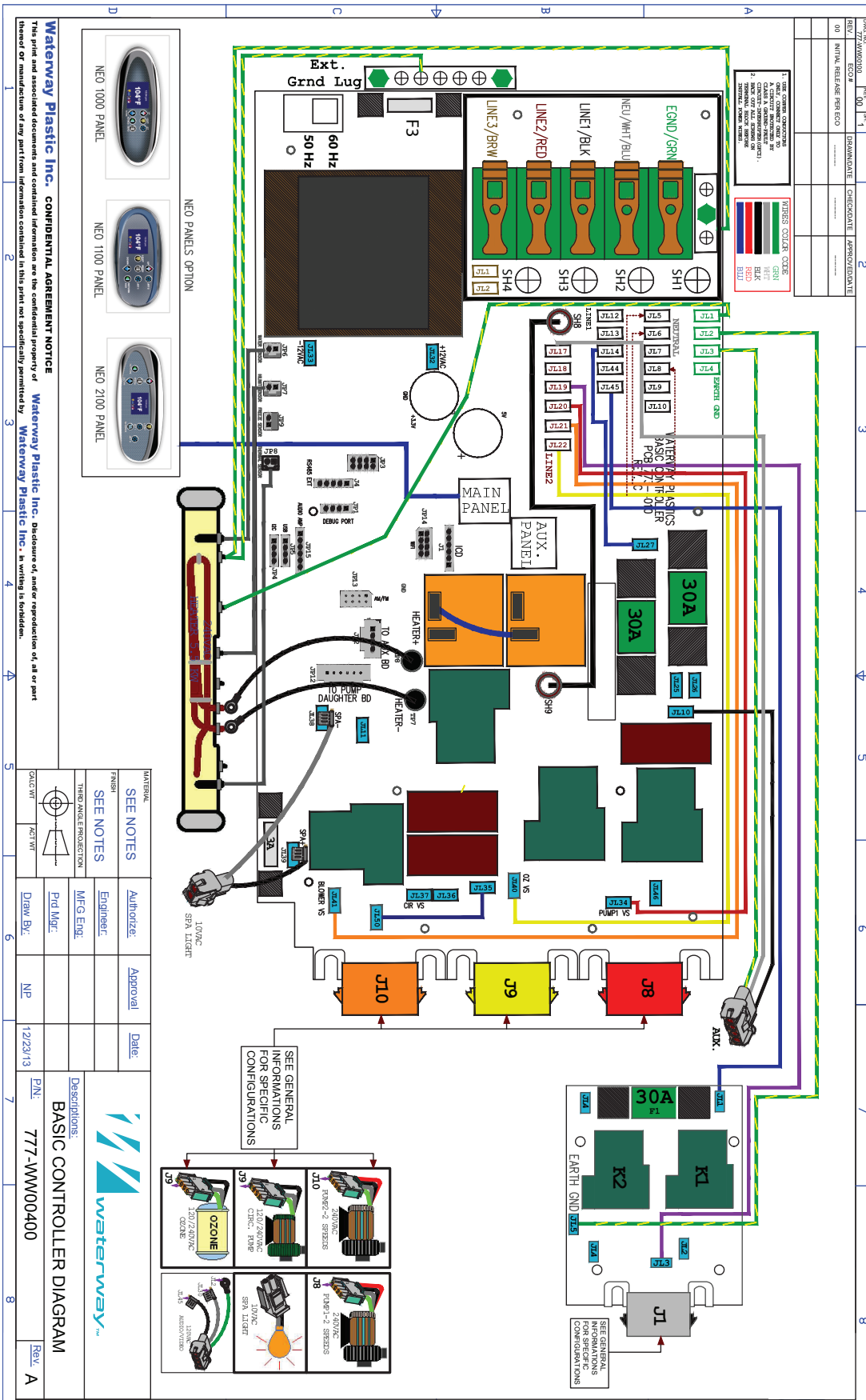
Plumbing Error  Press RETURN to Clear	Error caused when SENSOR 1 and SENSOR 3 have been plugged in incorrectly. Swap the SENSOR 1 and SENSOR 3 plug in controller to correct this problem.	Sensor 1 Open  Press RETURN to Clear	Check SENSOR 1 connection.
Insufficient Flow  Press RETURN to Clear	Error caused by no water flow through heater or no water in heater. Check to be sure there is enough water flow through heater.	Sensor 1 short  Press RETURN to Clear	Check SENSOR 1 connection or replace SENSOR 1.
Low Flow  Press RETURN to Clear	Check to be sure there is enough water flow through heater.	Sensor 2 Open  Press RETURN to Clear	Check SENSOR 2 connection.
Water Overheat  Press RETURN to Clear	Wait for water temperature to cool down.	Sensor 2 short  Press RETURN to Clear	Check SENSOR 2 connection or replace SENSOR 2.
Heater Overheat  Press RETURN to Clear	Wait for water temperature to cool down. Check to be sure there is enough water flow through heater.	Sensor 3 Open  Press RETURN to Clear	Check SENSOR 3 connection.
Potential Freeze  Press RETURN to Clear	Error caused when SENSOR 1, 2, or 3 detects low temperature. All JETS and BLOWERS will turn on automatically to protect plumbing from freezing. JETS and BLOWERS will shut down when all 3 SENSORS reach a desired temperature.	Sensor 3 short  Press RETURN to Clear	Check SENSOR 3 connection or replace SENSOR 3.

WIRING DIAGRAM 777-WW00100-A without Daughter Board



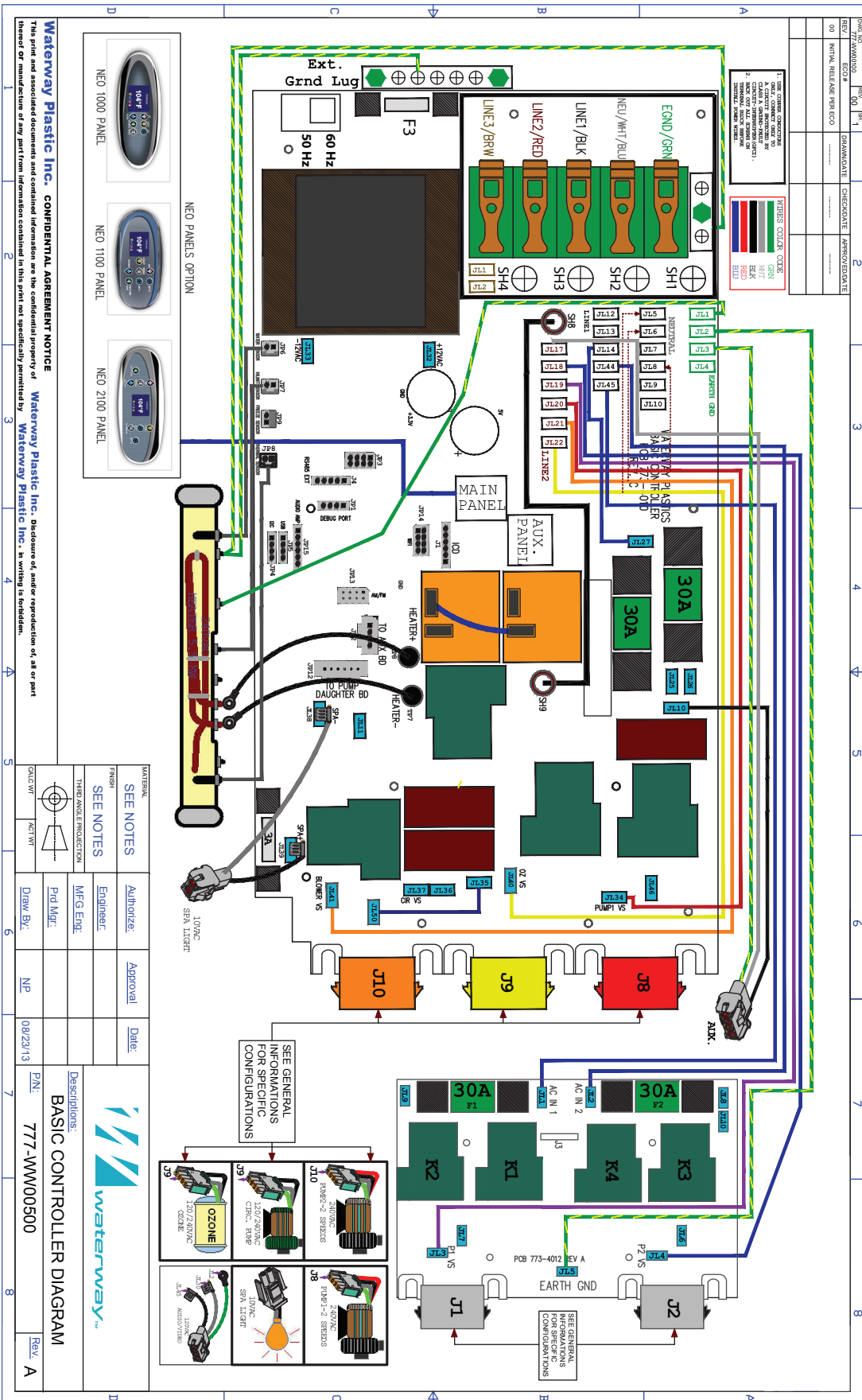
WIRING DIAGRAM

777-WW00400-A with DB1 2SPD Daughter Board



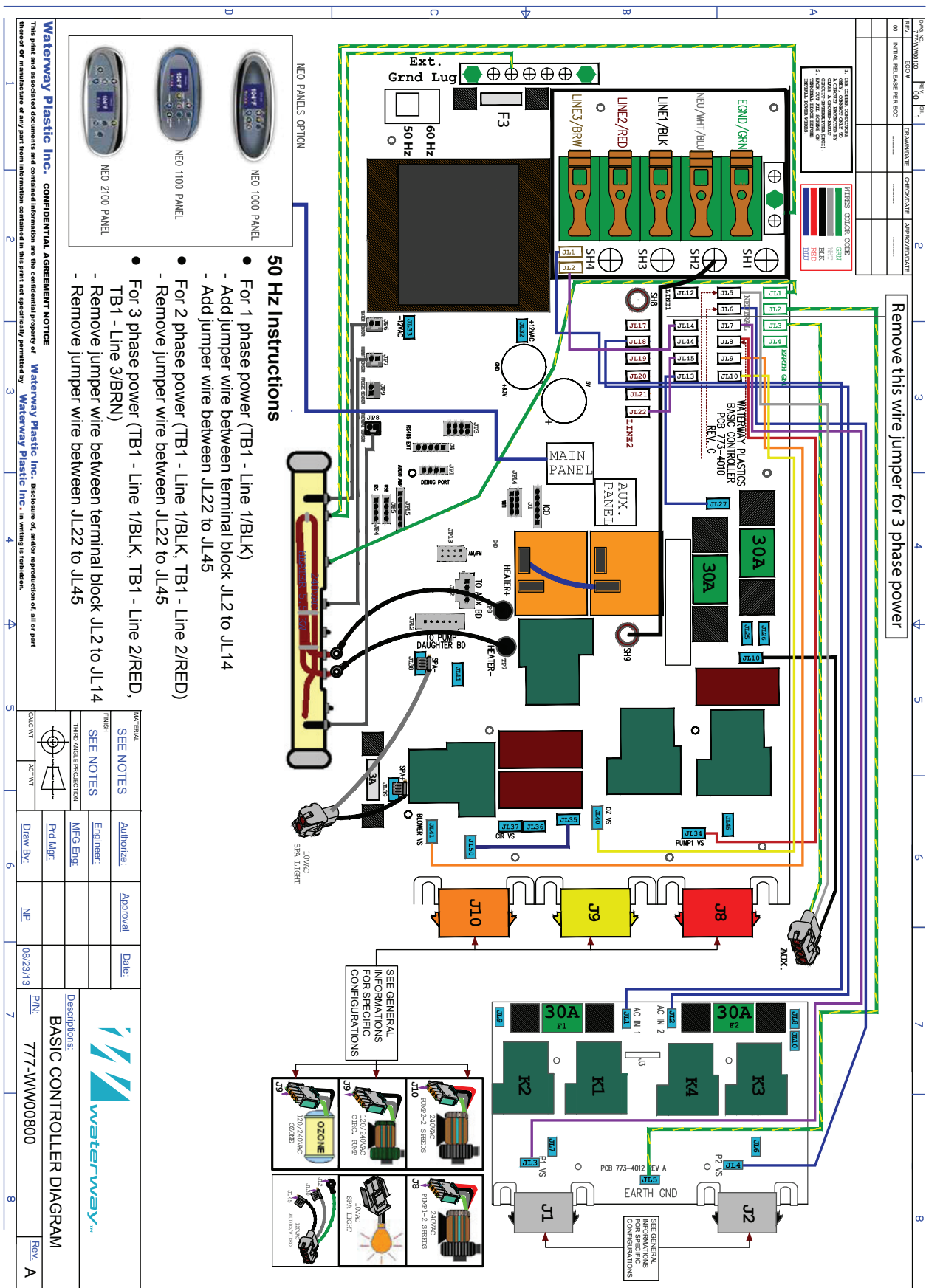
WIRING DIAGRAM

777-WW00500-A with DB2 2SPD Daughter Board



WIRING DIAGRAM

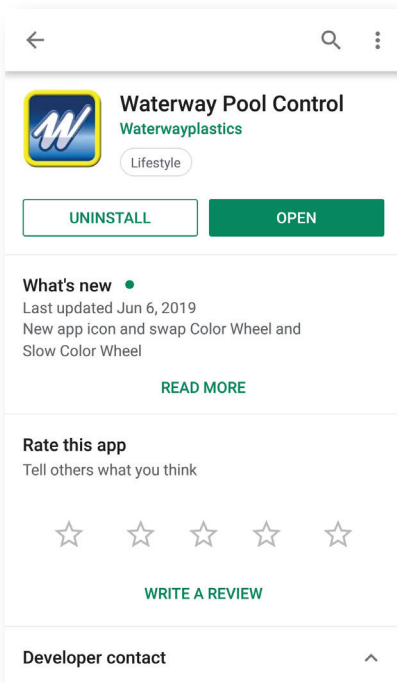
777-WW00800-A with (50 Hz) DB2 2SPD Daughter Board





2200 E. Sturgis Road, Oxnard, CA 93030 • Phone 805.981.0262 • Fax 805.981.9403
waterway@waterwayplastics.com • www.waterwayplastics.com

Waterway NEO Spa Control Wi-Fi Operation Instructions



1



2

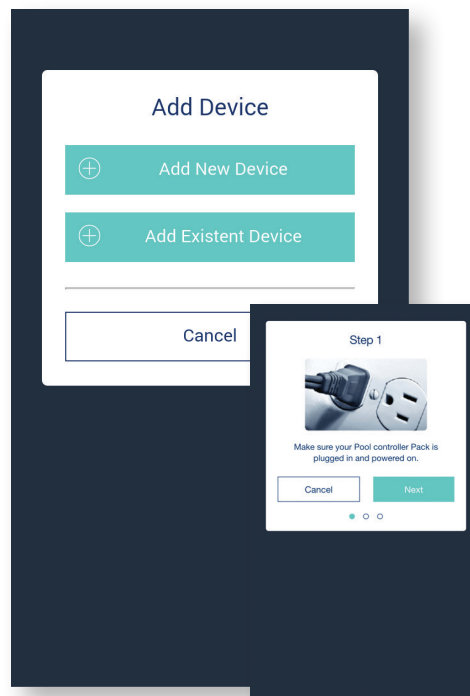
3



4



5



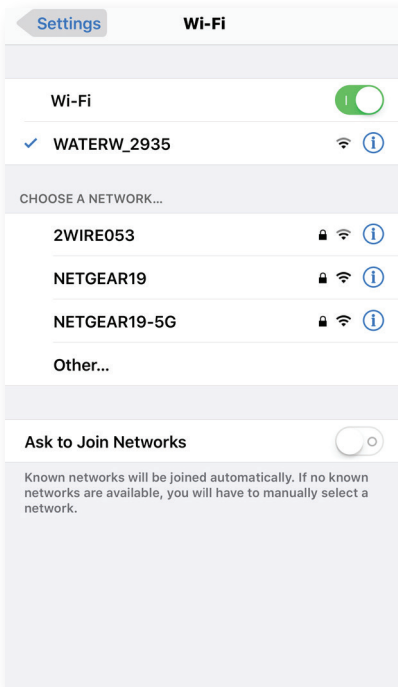
6

7

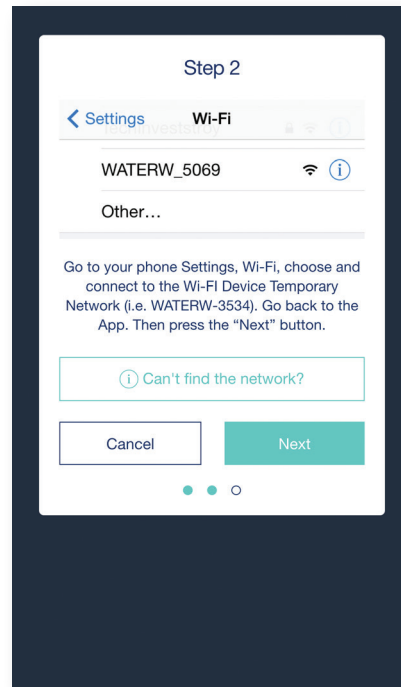
1. Download and install the App from the App Store or Google Play.
2. Select **Create Account**.
3. Enter your email address, password, confirm and submit.
4. Select **Configure a Device**.
5. Select **NEO Spa Control**.
6. Select **Add New Device**.
7. Make sure your NEO Spa Control is on and select **Next**.



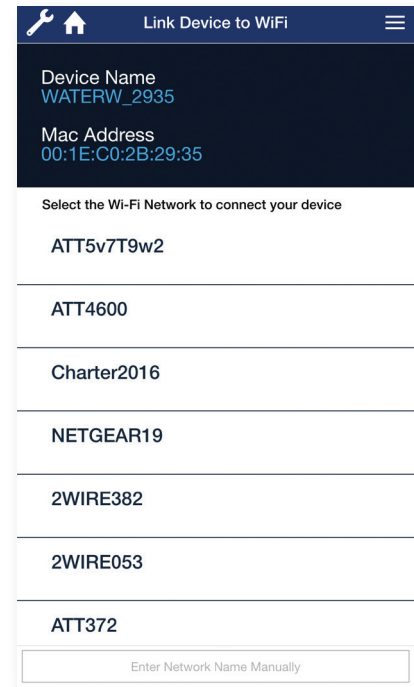
Waterway NEO Spa Control Wi-Fi Operation Instructions



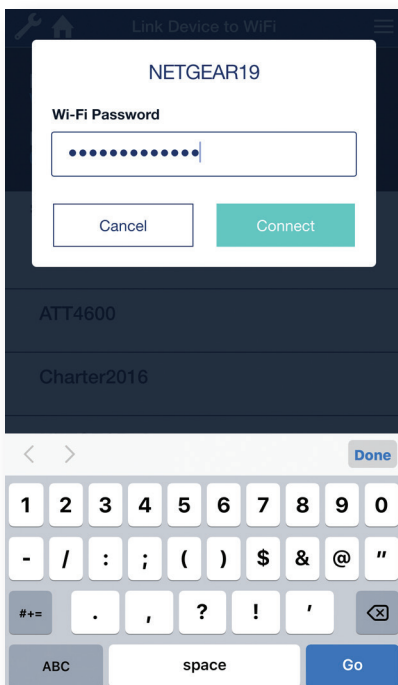
8



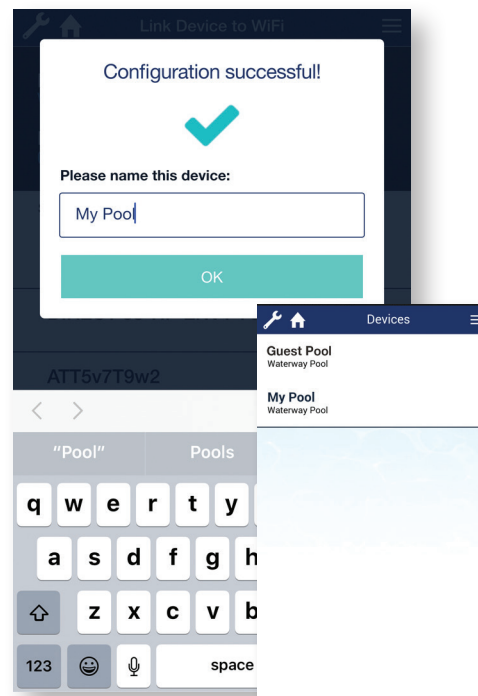
9



10



11

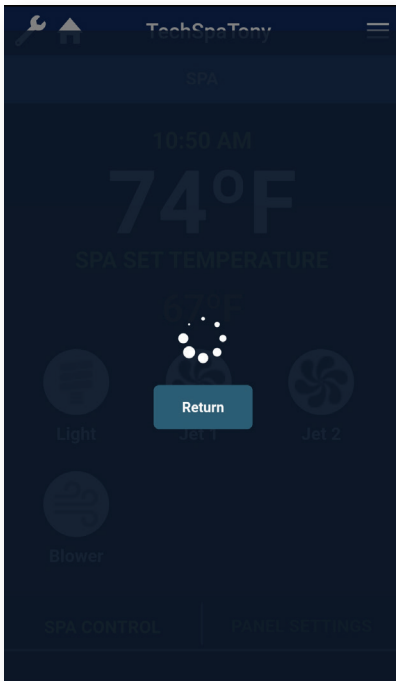


12

13

8. Go to your phone Settings, Wifi, and connect to the 'WaterW-xxxx' network.
9. Return to the Waterway App and Select **Next**.
10. Select your 2.4 Ghz home network from the list (if your network name is not listed, it can be entered manually).
11. Enter your home network password and select **Connect**.
12. The device will configure and connect to your 2.4 Ghz home Wi-fi network. Name your spa and select 'OK'.
13. Select the configured device to connect. i.e. MySpa.

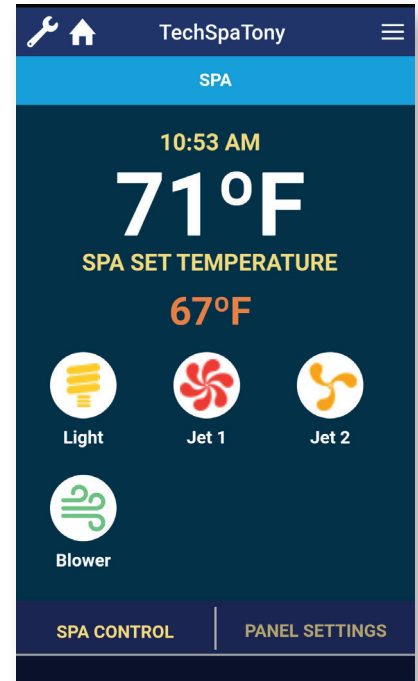
Waterway NEO Spa Control Wi-Fi Operation Instructions



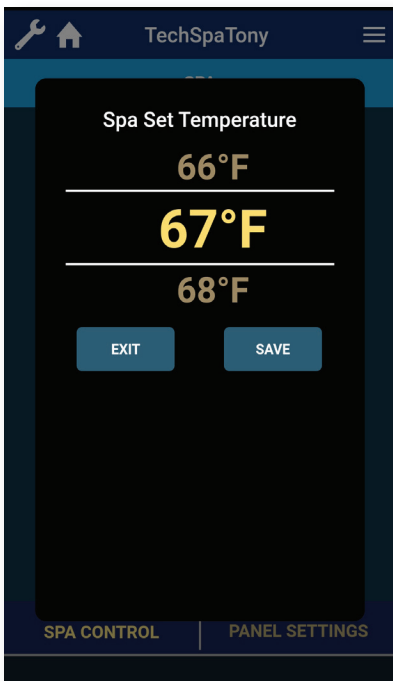
14



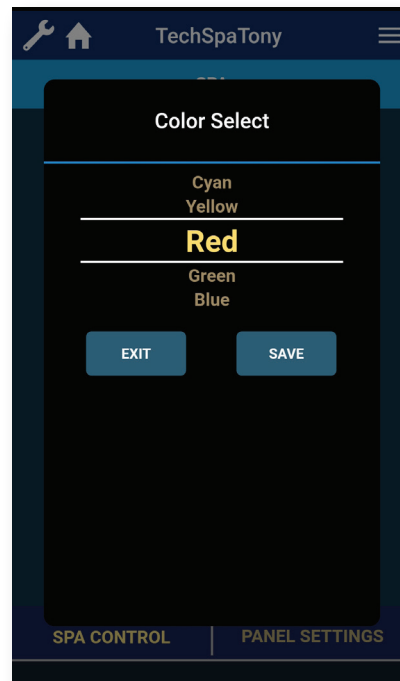
15



16



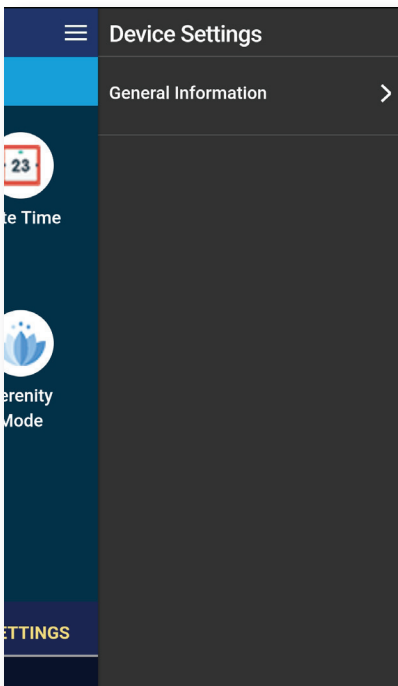
17



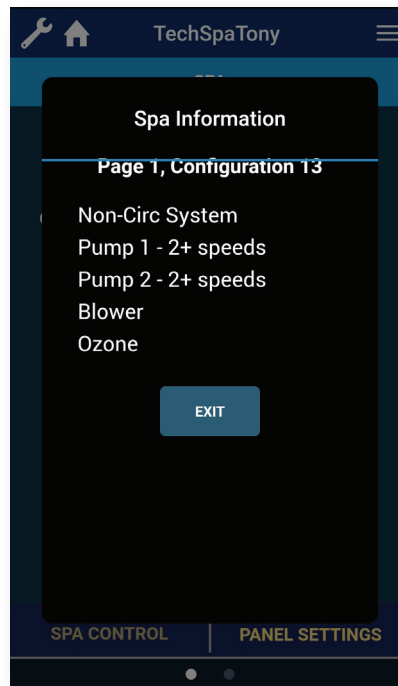
18

14. The App is connecting to the device.
15. The Spa Control screen is displayed.
16. The Light, Jets, and Blower can be turned on and off. Select '**Spa Set Temperature**' to adjust the set temp.
17. Swipe up or down to adjust the temperature.
EXIT to go back or
SAVE to save the setting.
18. If a multicolor light is installed, select Light, then choose a color and **SAVE**.

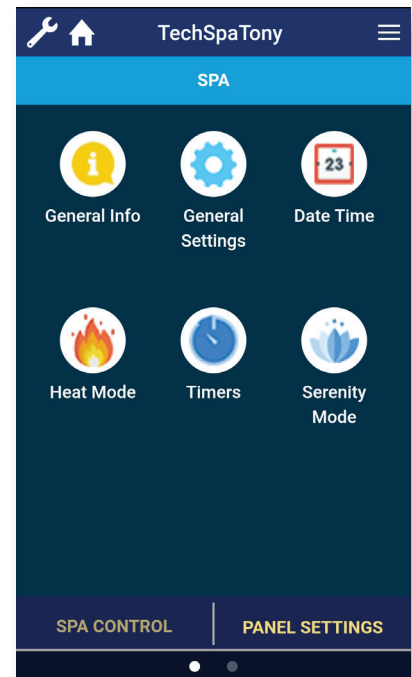
Waterway NEO Spa Control Wi-Fi Operation Instructions



19



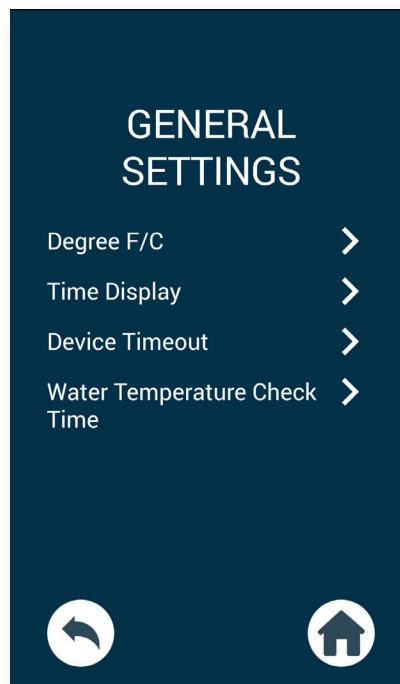
20



21



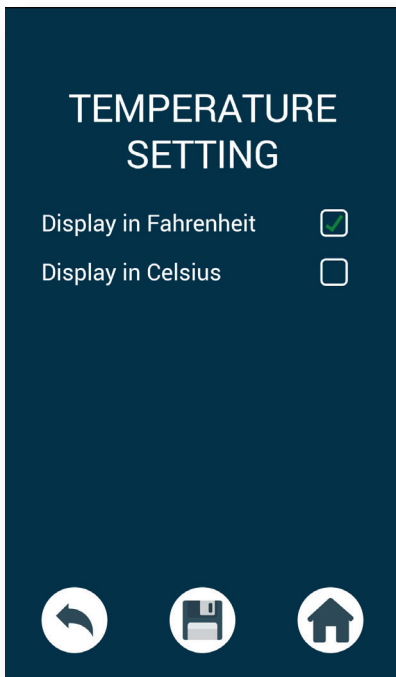
22



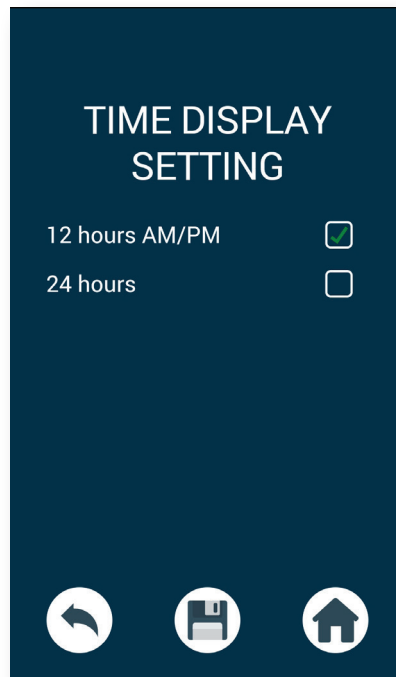
23

19. Select = to view Device Settings.
20. Select General Information to view the NEO Configuration.
21. Select **Panel Settings** to display the settings for the NEO.
22. Select **General Info** to display information about the NEO controller.
23. Select **General Settings** to display the options listed.

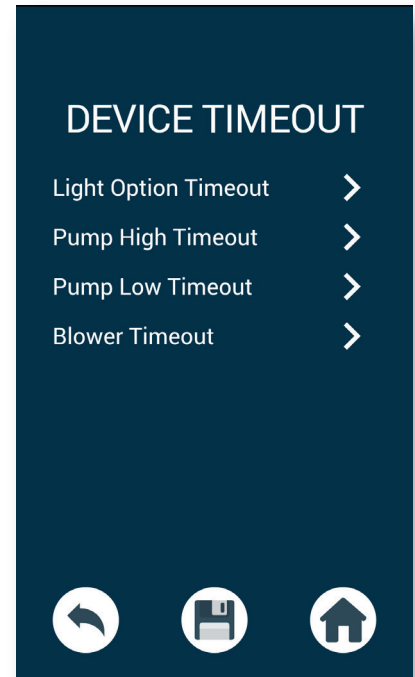
Waterway NEO Spa Control Wi-Fi Operation Instructions



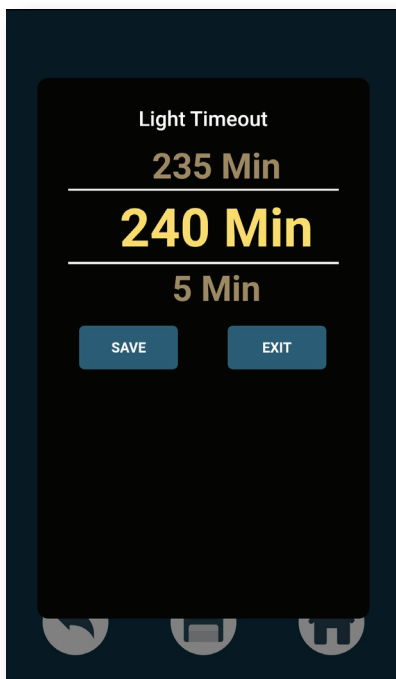
24



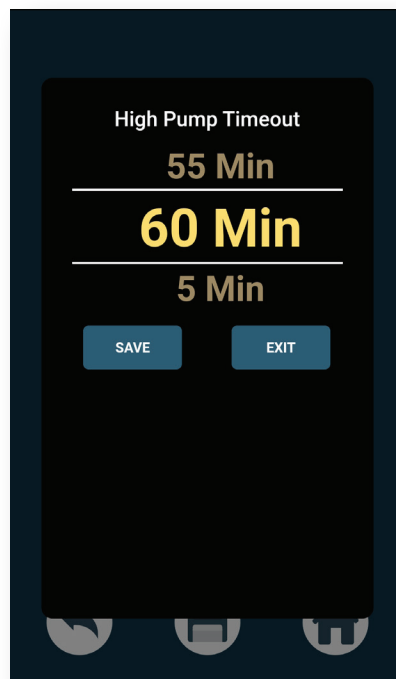
25



26



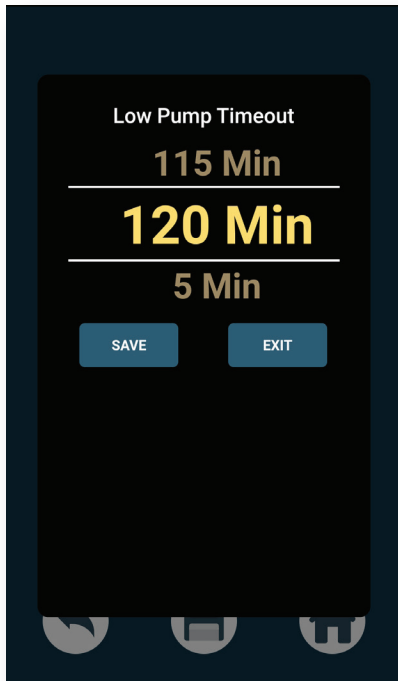
27



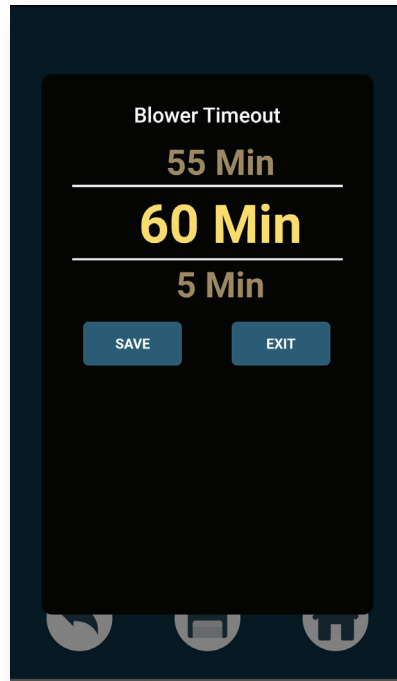
28

- 24. Select **Degree F/C** to choose between Fahrenheit or Celsius.
- 25. Select **Time Display Setting** to choose between 12 hours (AM/PM) or 24 hours.
- 26. Select **Device Timeout** to show a list of devices that can be adjusted.
- 27. **Light Timeout** can be as low as 5 minutes or as high as 240 minutes.
- 28. **High Speed Timeout** can be as low as 5 minutes or as high as 60 minutes.

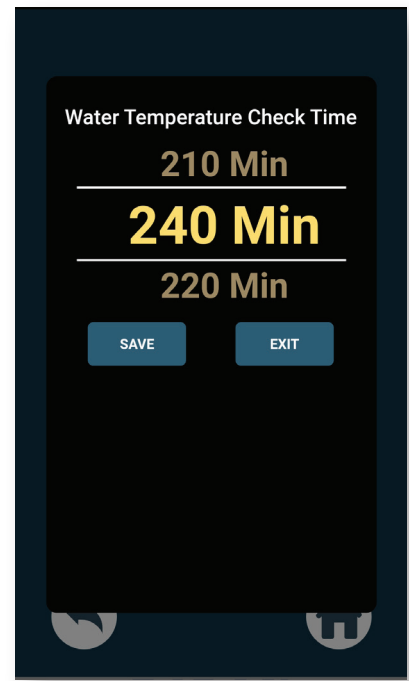
Waterway NEO Spa Control Wi-Fi Operation Instructions



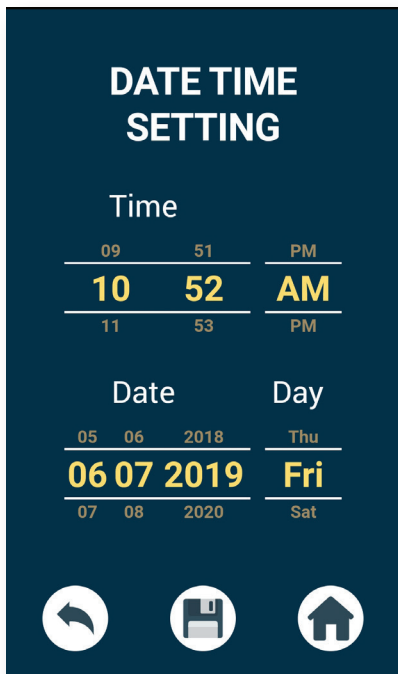
29



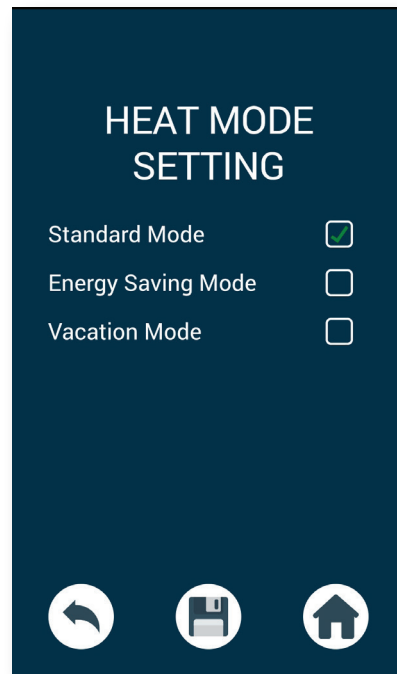
30



31



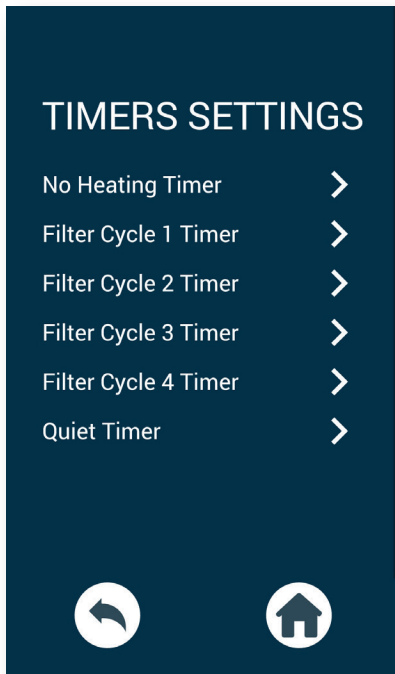
32



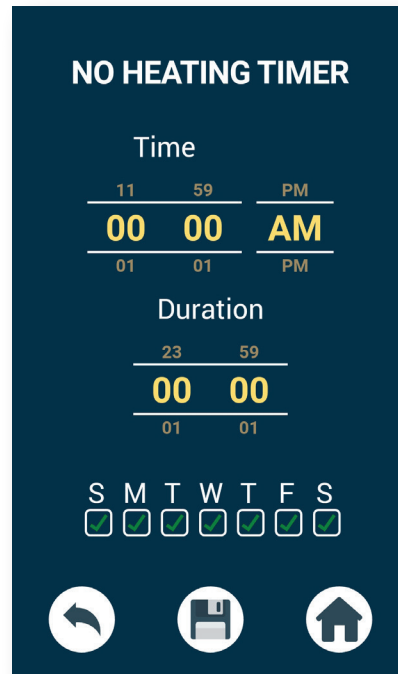
33

- 29. Low Speed Timeout** can be as low as 5 minutes or as high as 120 minutes.
- 30. Blower Timeout** can be as low as 5 minutes or as high as 60 minutes.
- 31. Water Temp Check Time** can be set as low as 15 or 30 minutes or as high as 240 minutes.
- 32. Adjust** date and time by moving fields up or down. Select Save to set.
- 33. Heat Mode** sets the number of Temp Check times between cycles.

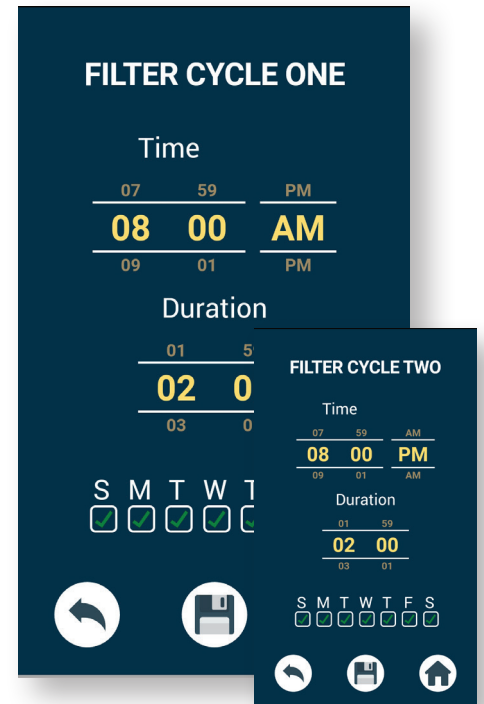
Waterway NEO Spa Control Wi-Fi Operation Instructions



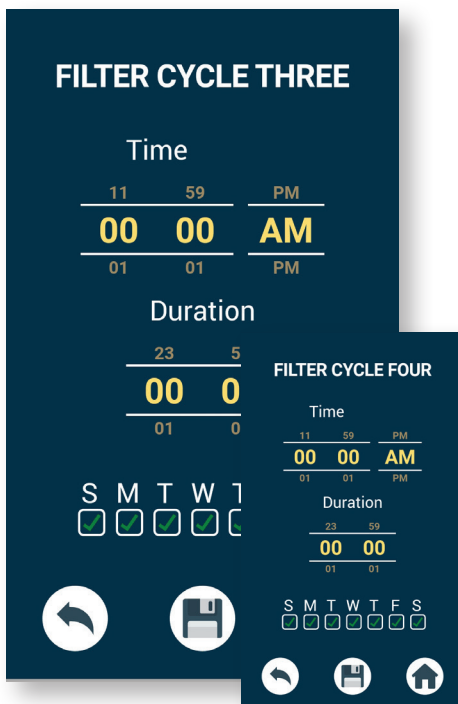
34



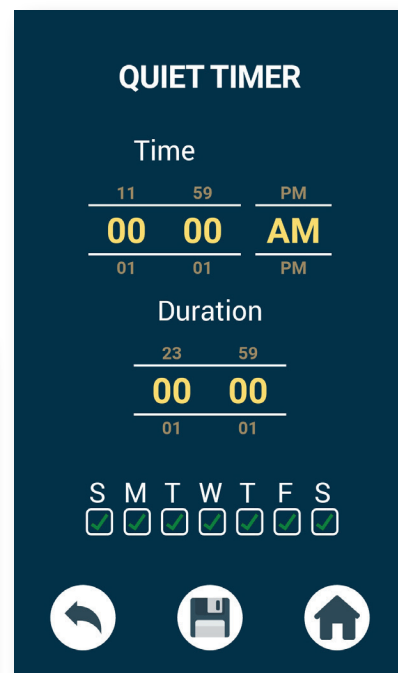
35



36a



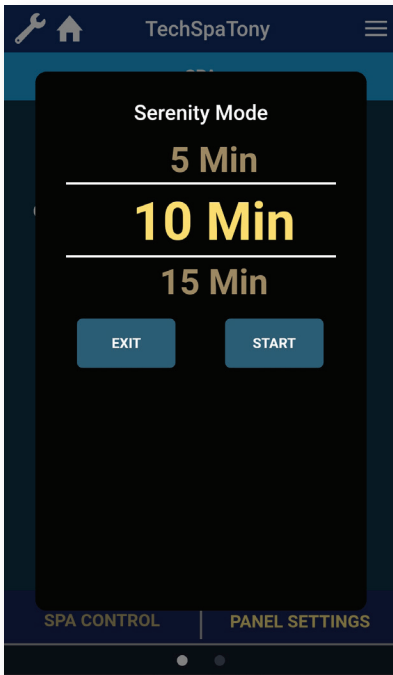
36b



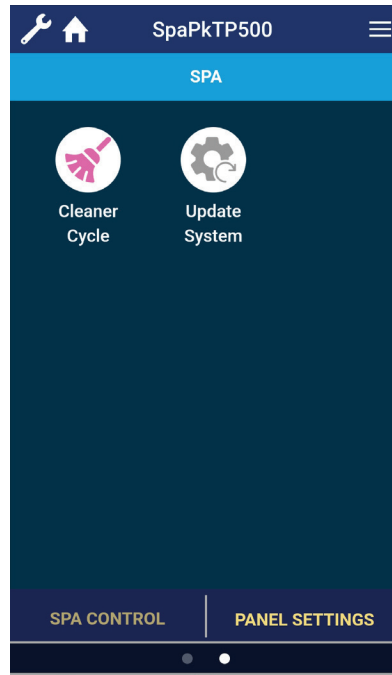
37

34. Select **Timers Settings** to display a list of timers that can be adjusted.
35. Select **No Heating Timer** to set the times that the NEO will not heat the spa.
36. Each filter cycle can be customized. By default; Filter Cycle 1 = 8:00 am, 2 hrs and Filter Cycle 2 = 8:00 pm, 2 hrs.
37. Select **Quiet Timer** to set the times that the NEO will not run pumps.

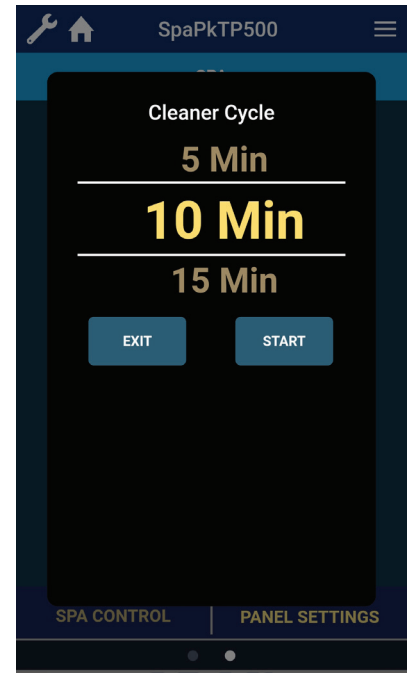
Waterway NEO Spa Control Wi-Fi Operation Instructions



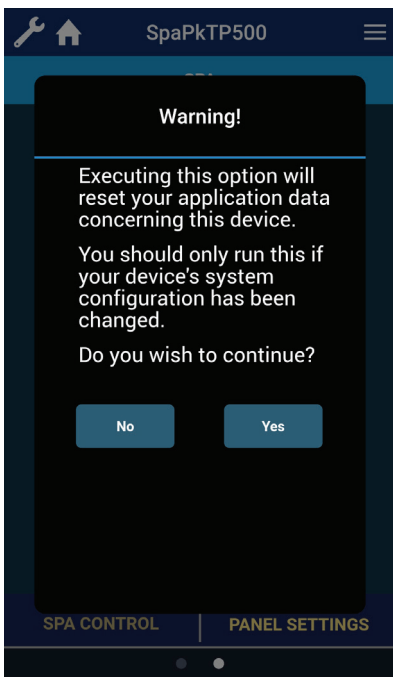
38



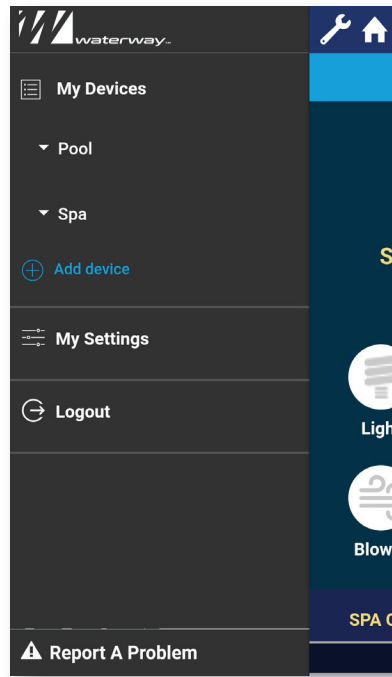
39



40



41



42

38. Select **Serenity Mode** to temporarily stop pumps from running.
39. Swiping to the right displays **Cleaner Cycle** and **Update System**.
40. Select **Cleaner Cycle** to set the number of minutes for the cycle to run. **START** will start the cycle.
41. Select **Update System** to update the App if the Configuration has been changed on the NEO.
42. The **WRENCH** icon displays account settings for the App.




2200 East Sturgis Road, Oxnard, CA 93030 • Phone 805.981.0262 • Fax 805.981.9403
www.waterwayplastics.com • waterway@waterwayplastics.com

Change 'Heating Setup' On NEO Spa Controllers

In order to adjust the 'heating setup' in Neo Spa Controllers, 'Service Mode' must be accessed.

To access 'Service Mode':

Press:  Menu

Press:  Down to select 'Service Mode'

Rotate View
Special Temp
Heat Mode
Filter Cycles
Date-Time


Panel Lock
No Heat Time
Service Mode
Demo Mode
Serenity Mode

With 'Service Mode' highlighted:

Press  Menu, then  up, then  down.




This will allow you to access "Service Mode".

Equipment Test
System Default
System Logged
Spa Light
Configuration

Press  down to select 'Heating Setup'

Temp Display
Aux Button Map
Heating Setup
Option Timer

Here you can adjust the settings for 'pump', 'Heater' and 'Rating':

Press  Menu to select the field and
up  or  down to adjust the value

Equipment Amps
Pump: 12 Amps
Heater: 5.5 KW
Rating: 48 Amps

In a typical 230V system the settings will be:

Pump: 12 Amps
Heater: 5.5 KW
Rating: 48 Amps

In a typical 115V system the settings will be:

Pump: 10 Amps
Heater: 1.0 KW
Rating: 15 Amps

Equipment Amps
Pump: 10 Amps
Heater: 1.0 KW
Rating: 15 Amps

