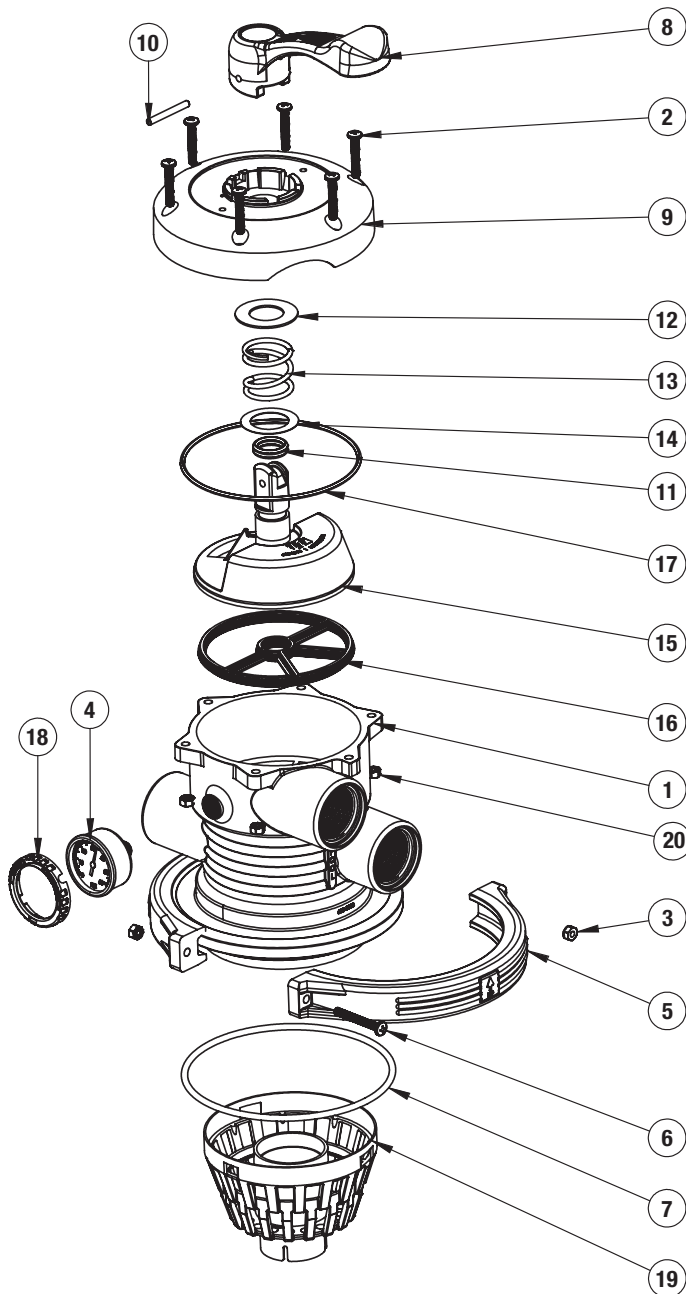
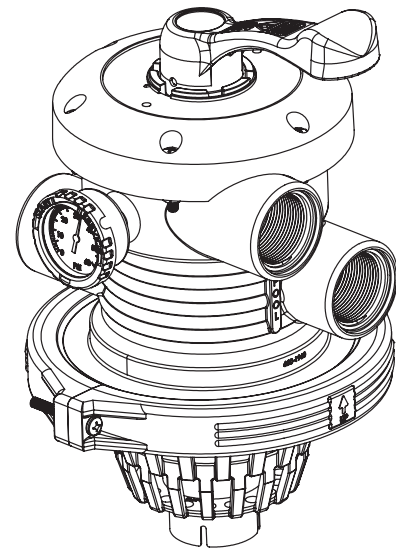


Waterway's Service Logic Sand Filter Valve Owner's Manual

Replacement for Hayward® sand filter valve model #:
SP0714TC/SP0714TE/SP0714T Series Vari-Flo XL Valve



1. Valve Body
2. Screws
3. Nuts
4. Pressure Gauge
5. Collar
6. Screws
7. Body O-Ring
8. Handle
9. Lid
10. Locking Pin
11. Diverter O-Ring
12. Washer/Spacer - Plastic
13. Spring
14. Metal Spacer
15. Diverter
16. Diverter Gasket
17. Lid O-Ring
18. Gauge Bezel
19. Diffuser
20. Nuts



2200 East Sturgis Road, Oxnard CA 93030 • Phone 805.981.0262 • Fax 805.981.9403

www.waterwayplastics.com • waterway@waterwayplastics.com

Caution: Shut off pump before operating or servicing the valve.

VALVE FUNCTIONS

Valve Settings	Flow Direction Through Valve
FILTER	Pump – Top – Through Filter – Bottom – Return For normal filtration and vacuuming pool through filter.
BACKWASH	Pump – Bottom – Through Filter – Bottom Waste For reversing flow for cleaning filter.
RINSE	Pump – Top – Through Filter – Bottom Waste For initial start-up cleaning, plus resetting filter bed after back washing.
WASTE	Pump – Waste For vacuuming directly to waste, lowering the pool level / draining the pool
CLOSED	No Circulation Past Pump Port For shutting off all flow to the filter and the pool.
BYPASS	Pump – Return For bypassing the filter, but circulating pool water. May be plumbed for “off-system” pool water access. Ideal for Jet-Air fittings.
WINTERIZE	Valve not in use For Winterizing.

Clamp Installation:

1. Completely discard the old valve, the clamps and screws and nuts.
2. Use the screws, nuts & clamp pieces that come with the new valve.
3. To install clamp, loosely pre-assemble both halves of the clamp with one screw and nut, turning the nut 2 or 3 turns.
4. Install the clamp around the tank and valve flange, and then assemble the second screw and nut.
5. Tighten the clamp on both sides of the clamp alternately and evenly. Use a properly sized screw driver. Tighten firmly to obtain a good seal.



2200 East Sturgis Road, Oxnard CA 93030 • Phone 805.981.0262 • Fax 805.981.9403

www.waterwayplastics.com • waterway@waterwayplastics.com

General:

- 1. Plumbing: Important: Do not over tighten pipe fittings.** Proper fitting make-up is hand tight plus one to 1 ½ turns maximum. Always use Teflon pipe tape or Permatex No.2 for connections to provide a good "living" seal. Add extra sealant if male pipe fitting is undersized.
- 2. Winterizing:** Drain and winterize filter and pump per manufacture's instructions. To drain water from valve, depress and rotate valve handle and place handle on raised portion of index hubs at any "Winter" position.
- 3. Servicing Valve:** If it becomes necessary to service or gain access to the key or valve seat gasket:
 - a. Set handle in Winter position.
 - b. Remove cover screws.
 - c. Lift cover and key assembly out.
- 4. Re-Assembly Valve:**
 - a. Wipe debris from cover O-Ring.
 - b. Set handle in Winter position. Align position on cover with tab on body. Press down to seat assembly.
 - c. Secure assembly to the body with cover. Start screw thread in existence thread in body. Tighten cover screws evenly and alternately. Tighten screw cover screws evenly and alternately. Do not over tighten.

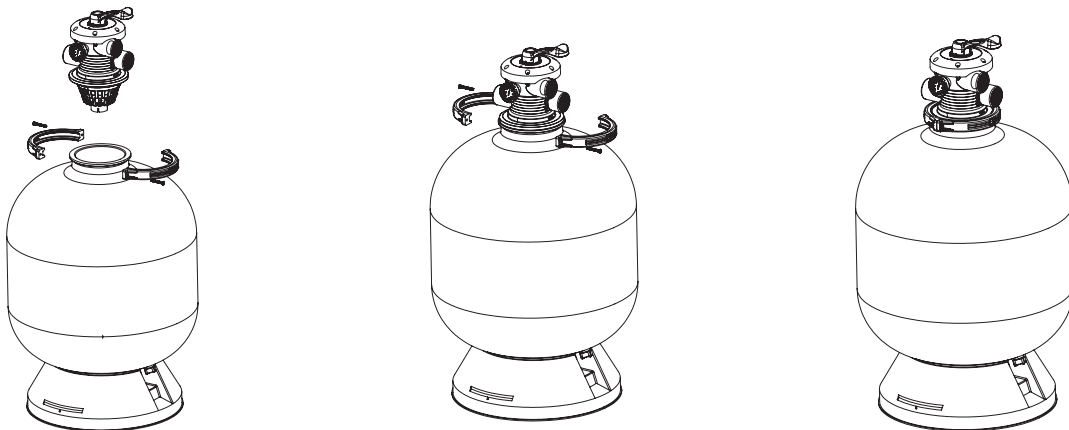
Special Instructions:

1. Disassembly of key and handle assembly:

- a. To remove handle pin: Depress handle to allow pin to clear indexing hub, and tap out handle pin with a drift pin or other solid pin bar.
- b. Remove cover screws and remove parts. Note the proper position and sequence of all parts.


2. Re-Assembly:


- a. Place valve key on a smooth, firm surface (place a cloth underneath to protect the flat sealing surface).
- b. Place parts on key and shaft - i.e., spring washer, cover, bearing, etc. Note: Make sure "Filter" position on cover is over "wedge" opening key.
- c. Firmly pressing down and holding cover to depress heavy duty spring align handle (with pointer to filter) and secure handle with pin.
- d. Assemble key assembly to valve.



2200 East Sturgis Road, Oxnard CA 93030 • Phone 805.981.0262 • Fax 805.981.9403

www.waterwayplastics.com • waterway@waterwayplastics.com

 **Warning – Hazardous Pressure.** Pool and Spa water circulation system operate under hazardous pressure during start up, normal operation, and after pump shut off. Stand clear of circulation system equipment during pump start up. Failure to follow safety and operation instructions could result in violent separation of the pump housing and cover, and / or filter housing and clamp due to pressure in the system, which could cause property damage, severe personal injury, or death. Before servicing pool and spa water circulation system, all system and pump controls must be in off position and filter manual air relief valve must be in the open position. Before starting system pump, all system valves must be set in a position to allow system water to return back to the pool. Do not change filter control valve position while system pump is running. Before starting system pump, fully open filter manual air relief valve. Do not close filter manual air relief valve until a steady stream of water (not air or air and water) is discharged.

 **Warning – Separation Hazard.** Failure to follow safety and operation instructions could result in violent separation of pump and / or filter components. Strainer cover must be properly secured to pump housing with strainer cover lock ring. Before servicing pool and spa circulation system, filters manual air relief valve must be in the open position. Do not operate pool and spa circulation system if a system component is not assembled properly, damaged, or missing. Do not operate pool and spa circulation system unless filter manual air relief valve body is in locked position in filter upper body. Never operate or test the circulation system at more than 50 PSI. Do not purge the system with compressed air. Purging the system with compressed air can cause components to explode, with risk of severe injury or death to anyone nearby. Use only a low pressure (below 5 PSI), high volume blower when air purging the pump, filter, or piping.



2200 East Sturgis Road, Oxnard CA 93030 • Phone 805.981.0262 • Fax 805.981.9403

www.waterwayplastics.com • waterway@waterwayplastics.com