

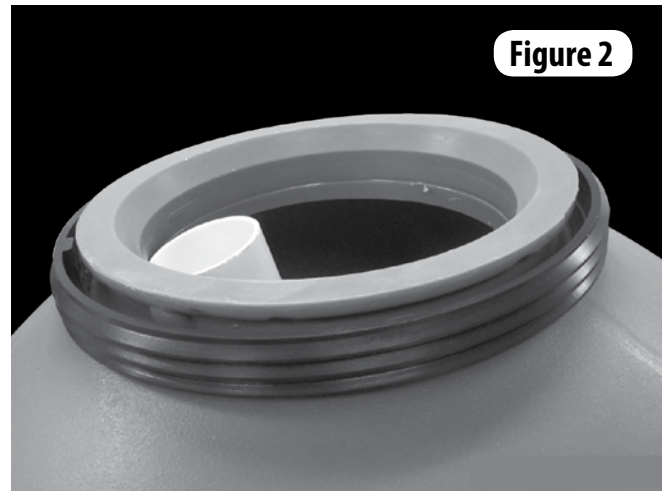
# INSTALLATION INSTRUCTIONS

## Sand Filter Threaded Ring

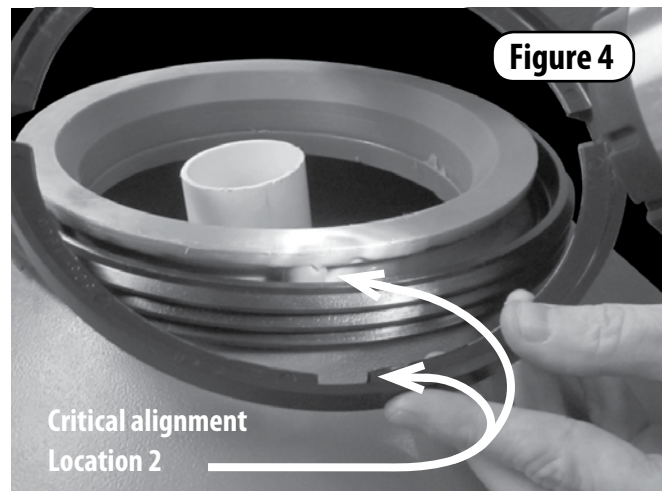
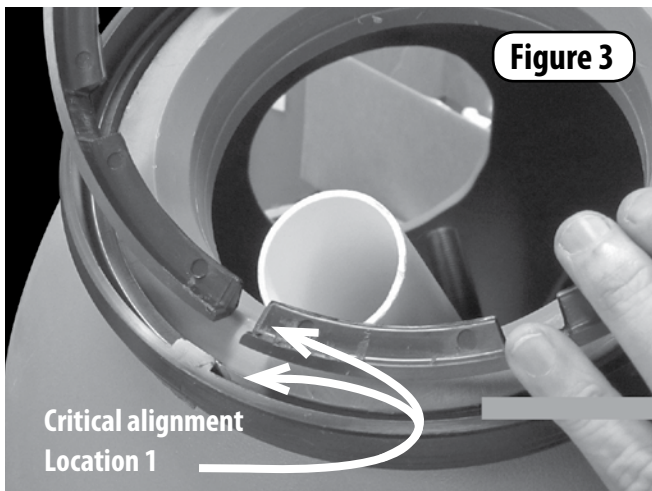
- 1** Place the Threaded Ring over the Sand Filter Collar as shown in **Figure 1**.



- 2** Make sure Ring is seated all the way down as shown in **Figure 2**.

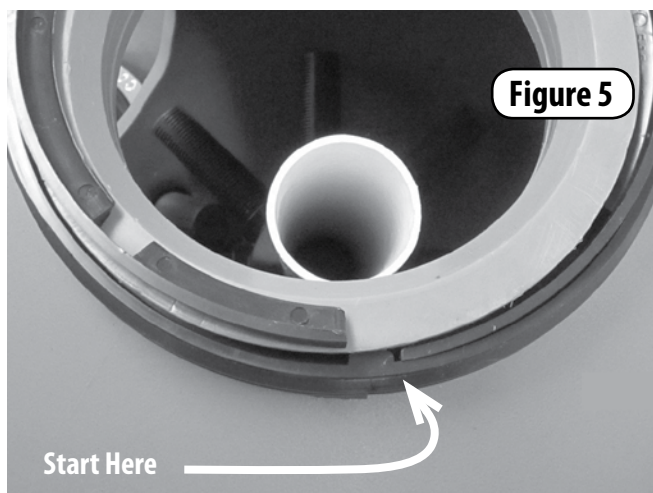


- 3** Before starting the installation of the Retainer Ring there are two locations that must be aligned simultaneously and must stay aligned during the complete installation process. See **Figure 3 & 4** for critical alignment locations.

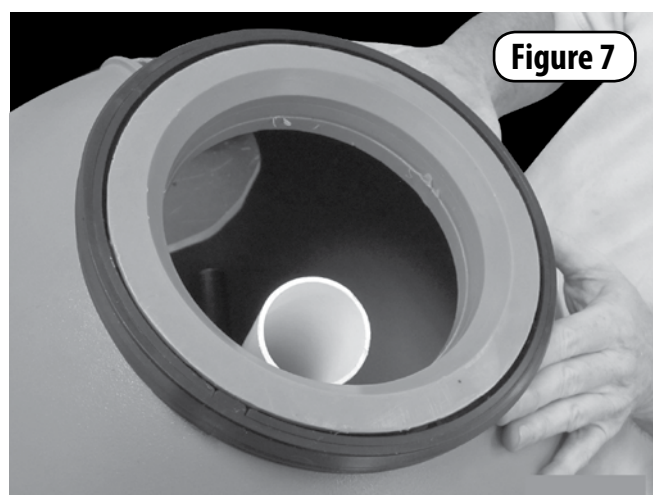
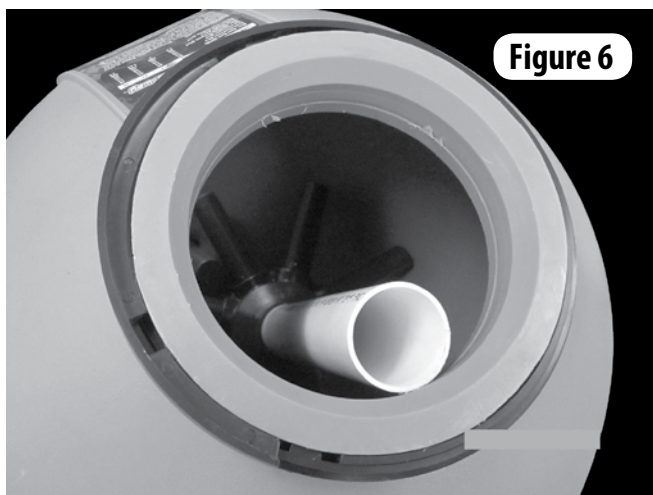


*Continued on other side.*

- 4** With everything properly aligned begin tucking the Retainer Ring between the Sand Filter Collar and the Threaded Ring as shown in **Figure 5**.



- 5** Continue tucking in the Retainer Ring counter-clockwise as shown in **Figure 6** until it is completely in position. See **Figure 7**.



#### WARRANTY

For product registration visit: [www.waterwayplastics.com](http://www.waterwayplastics.com).  
For Warranty questions or claims please contact point of purchase.



2200 East Sturgis Road, Oxnard CA 93030 • Phone 805.981.0262 • Fax 805.981.9403  
[www.waterwayplastics.com](http://www.waterwayplastics.com) • [waterway@waterwayplastics.com](mailto:waterway@waterwayplastics.com)