

# FLO-PRO II ABOVE GROUND SKIMMERS INSTALLATION INSTRUCTIONS

**SAVE THESE INSTRUCTIONS** • Read all instructions prior to assembly

**IMPORTANT:** Average water level should be approximately at middle of faceplate. Install accordingly.

## INSTALLATION FOR ABOVE GROUND METAL POOLS WITH FACTORY PRE-CUT:

1. Install vinyl liner in assembled pool.
2. Position Gasket (#5, 711-0060) through square hole in Pool Wall.
3. Position Mounting Plate (#3, 519-3180). Weir Door Pivot Pins should be positioned on bottom as illustrated. Pool wall should be secured between gaskets. Using two (2) screws (#4, 819-0006) one in each top corner of mounting Plate, line up through liner, gasket, and wall, then attach to body on outside of pool. Leave screws loose until all screws have been aligned and fastened to body, then secure snugly. **DO NOT OVER-TIGHTEN.** Cut out vinyl liner along inside edges of Mounting Plate opening.
4. To insert or remove basket, turn basket until basket lip clearance aligns with mounting tabs. Basket can either be accessed through the top lid or via front opening.
5. To affix hose to body, wrap Hose Adapter, #10, with 4 to 6 turns of Teflon tape (HINT: Apply tape in a clockwise rotation or the opposite direction that the threads run). Screw into threads on bottom of Skimmer body (Teflon tape not included).
6. To use Vacuum Plate (#9, 519-3150), remove lid and place vacuum plate directly on top of basket. System suction will hold in place.

## FOR FLO-PRO WIDE MOUTH:

7. Pool Wall should be secured between Gaskets (#12, 711-0070).
8. Substitute Wide Mouth Mounting Plate (#13, 519-4110) for Mounting Plate (#3, 519-3180) when securing to skimmer body.

## INSTALLATION FOR DELUXE WALL RETURN

### WITH EYEBALL: (ONLY FOR MODELS 560-CXCXXX, 560-DXCXXX)

1. Slide the rubber gasket (#2, 711-4350) onto the threads of the wallfitting (215-9170). The rubber gasket must be placed between

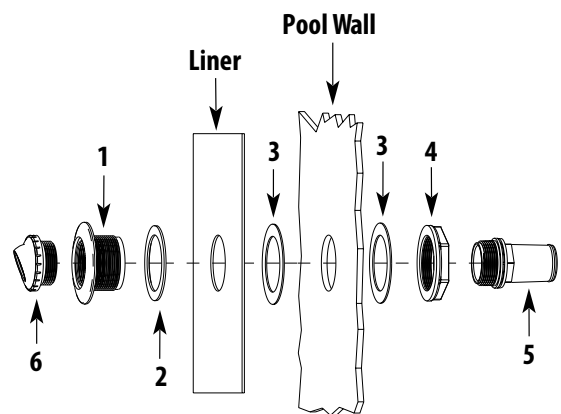
the wallfitting flange and liner.

2. Pierce a hole in the liner large enough to slide the wallfitting through the liner. Push the wallfitting (215-9170) through the liner. Slide the paper gasket (806-1050) onto the threads of the wallfitting between the liner and the pool wall (you will need to slightly bend the paper gasket to fit between the pool wall and gasket).
3. Slide wall fitting complete through the hole and put on second paper gasket, #3, then thread on nut (#4, 718-3150) until snug. **DO NOT OVER-TIGHTEN.**
4. To install return Hose to Hose Adapter (#5, 417-6140) follow the directions in #5 under the skimmer installation section and then thread the adapter into the back of the Wallfitting as shown in the detail below.

## WINTERIZING:

For Winterizing, use optional Winterizing Kit, P/N 500-3020.

| Item | Part No.         | Description                                     |
|------|------------------|---|
| 1    | <b>215-9170</b>  | Wallfitting - 1½" FPT Thru x 2" NPSM            |
| 2    | <b>711-4350</b>  | Gasket - Rubber                                 |
| 3    | <b>806-1050</b>  | Gasket - Paper                                  |
| 4    | <b>718-3150</b>  | Nut - Suction Strip Skimmer Vent - White        |
| 5    | <b>417-6140</b>  | 1½" MPT x 1½" Hose - Male Smooth Adapter        |
| 6    | <b>400-1410E</b> | Eyeball Fitting - 1" Eyeball - 1½" MPT Assembly |



## WARRANTY

For product registration visit: [www.waterwayplastics.com](http://www.waterwayplastics.com).

For Warranty questions or claims please contact point of purchase.



2200 East Sturgis Road, Oxnard CA 93030 • Phone 805.981.0262 • Fax 805.981.9403

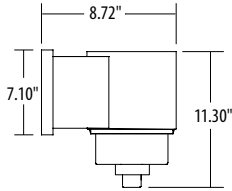
[www.waterwayplastics.com](http://www.waterwayplastics.com) • [waterway@waterwayplastics.com](mailto:waterway@waterwayplastics.com)

## FLO-PRO II STANDARD MOUTH

### SHORT THROAT



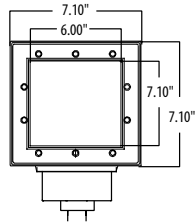
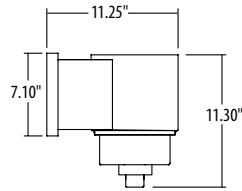
**560-C0A60S**



### LONG THROAT



**560-D0A60S**



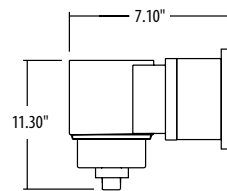
**FRONT**

## FLO-PRO II WIDE MOUTH

### SHORT THROAT



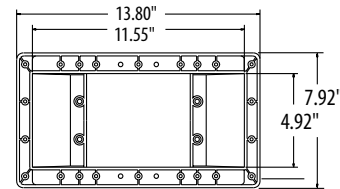
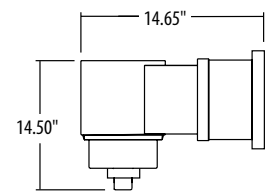
**560-D3A60L**



### LONG THROAT

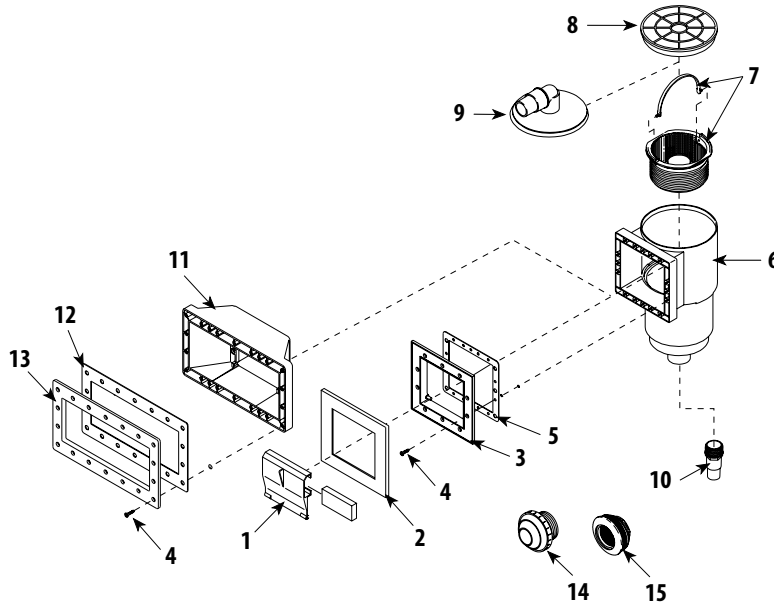


**560-C3A60L**



**FRONT**

## FLO-PRO II ABOVE GROUND SKIMMER REPLACEMENT PARTS



| Item | Part No.         | Description   |
|------|------------------|---|
| 1    | <b>542-3060</b>  | Weir Door with Foam - White   |
|      | <b>542-3067</b>  | Weir Door with Foam - Gray  |
| 2    | <b>519-3090</b>  | Trim Plate - ABS - White (optional)                                     |
|      | <b>519-3097</b>  | Trim Plate - ABS - Gray (optional)                                      |
| 3    | <b>519-3180</b>  | Mounting Plate - Front Access - White                                   |
|      | <b>519-3187</b>  | Mounting Plate - Front Access - Gray                                    |
| 4    | <b>819-0006</b>  | Screw - #12 x 1 1/4" PFH 18-8 Sms (10 for Standard - 18 for Wide Mouth) |
| 5    | <b>711-0060</b>  | Wall Protection Gasket - Weir Body                                      |
| 6    | <b>N/A</b>       | Body  |
| 7    | <b>550-1030</b>  | Basket - Assembly   |
| 8    | <b>519-3030</b>  | Lid - Front Access - White  |
| 9    | <b>519-3150</b>  | Vacuum Plate - Front Access with 90° Elbow                              |
| 10   | <b>417-6140</b>  | Hose Adapter - 1 1/2" MPT x 1 1/2" Hose                                 |
| 11   | <b>N/A</b>       | Body - Wide Mouth - White   |
|      | <b>N/A</b>       | Body - Wide Mouth - Gray  |
| 12   | <b>711-0070</b>  | Wall Protection Gasket - Wide Mouth                                     |
| 13   | <b>519-4110</b>  | Mounting Plate - Wide Mouth - White                                     |
|      | <b>519-4117</b>  | Mounting Plate - Wide Mouth - Gray                                      |
| 14   | <b>400-1410E</b> | Eyeball Fitting - 1" Eye - White  |
|      | <b>400-1417E</b> | Eyeball Fitting - 1" Eye - Gray   |
| 15   | <b>400-9170</b>  | Wall Fitting with Locknut and Gaskets - White                           |
|      | <b>500-3020</b>  | Winterizing Kit (optional)  |
|      | <b>810-0111</b>  | Instruction Sheet   |