

# ecoKleer

TM



## **CARTRIDGE FILTER SYSTEM OWNER'S MANUAL**

## ECO-KLEER CARTRIDGE FILTER SYSTEM OWNER'S MANUAL

Our Eco-Kleer Cartridge Filter System is shipped from Waterway complete with everything you need right in the box. Assemble filter system only after above-ground pool is installed. Fill pool with water. Do not raise water level above pool return line.

The pool equipment should be located between pool skimmer and return line. The filtration system should not be closer than 2 ft. and not further than 5 ft. from the pool. The Eco-Kleer Cartridge Filter System needs to be on a completely flat surface (e.g. patio block, cement slab, etc.). The pump will require a 110 volt/20 amp service.



**WARNING: A GFCI is required. Follow national and local building and safety codes.**

Before opening shipping carton, make sure box is in the upright position. Inside the carton, you will find:

1. One base
2. One pump (packaged in separate box)
3. One filter
4. Two lengths of 6 ft. hose
5. One bag with fittings

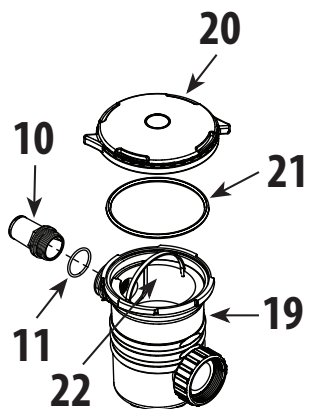
## INSTALLATION INSTRUCTIONS



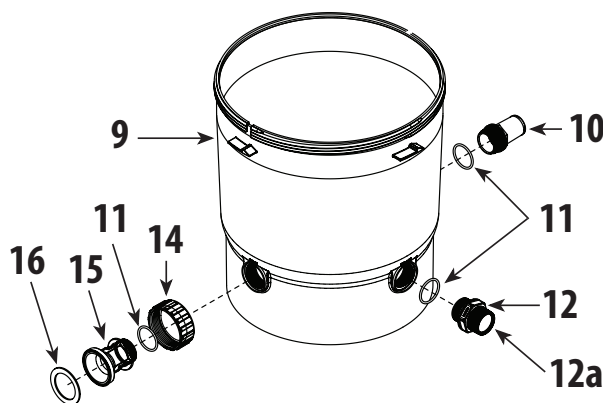
**WARNING! READ ALL INSTRUCTIONS AND WARNING LABELS BEFORE OPERATING FILTER!**

1. Place filter and base on a level, secure surface. Place the pump on the base to the left of the filter. The pump should now be facing the filter marked "Inlet". There is no need to disassemble filter or pump assemblies.
2. Open pump trap lid and remove 2" gasket. Place 2" gasket into union nut. Hand tighten union nut to suction side of pump (Detail 5).
3. Secure pump to the base using the snap pins (#18) provided (Detail 4).
4. Open fittings bag and remove coupling assembly (Detail 2). Assemble 2" gasket, coupling, coupling O-Ring, and 2" union nut, and thread into inlet side of filter.
5. Thread 2" union nut to pump discharge (Detail 3). Thread hose adapter with O-Ring, to pump trap suction side (Detail 1).
6. From the fittings package, remove 1 1/2" hose adapter and O-Ring (Detail 2). Thread into the outlet side of the filter tank.
7. Remove 4 hose clamps from the fittings bag. Select one of the hose lengths and slip one clamp over the end of hose adapter. Place the end of the hose onto the hose adapter (pump suction) and the other end to the hose adapter end of the pool skimmer. Repeat steps with filter outlet to pool return.
8. Remove the lid handle (#4a) from the fittings bag and attach it to the top of the lid assembly (#4) as shown (Detail 6). Secure filter to filter base using Phillips-head screws (#13a - 2), (Detail 7 & 8). Fill pool until water level is halfway up length of skimmer throat.
9. Open air release knob. Plug in and turn on pump. Air will pass out of the filter through the air release knob. Once water discharges from knob, close it.

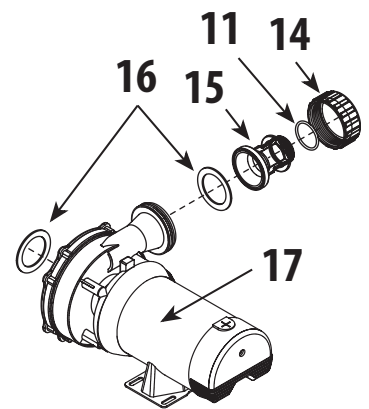
**NOTE:** To remove lid assembly, take off filter nut (#6), insert filter wrench (#9a) in notch between filter body (#9) and lid assembly (#4). Twist and separate as shown in Detail 7.



**DETAIL 1**



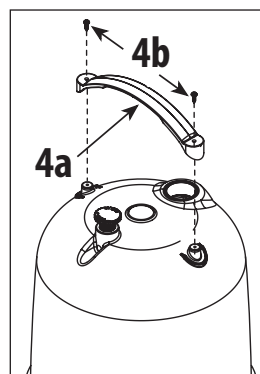
**DETAIL 2**



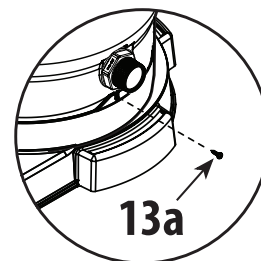
**DETAIL 3**

# ECO-KLEER CARTRIDGE FILTER SYSTEM REPLACEMENT PARTS

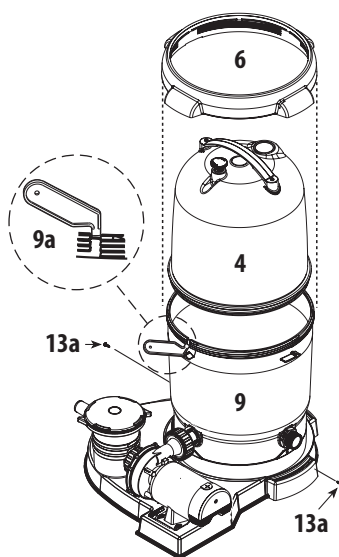
Item	Part No.	Description
1	830-4000SS	Pressure Gauge
1a	519-7431	Pressure Gauge – Fitting Adapter
1b	805-0117SD	O-Ring
2	602-0201	Air Relief Plug
3	805-0207	O-Ring – Air Relief
4	519-7407	Lid Assembly – Large (150/200 sq. ft.)
4a	519-7601	Lid Handle
4b	819-9002	#12 x 3/4" S/S Phillips Head Screw
5	805-0460	Lid O-Ring
6	718-7251	Filter Nut ( <i>sold with Lid Assembly only</i> )
6a	519-7451	Handle Assembly Lock Tab (2 required)
7	519-7441	Wing Nut
7a	500-7360	Core Center Sub -Assembly
7b	500-7350	1/4" x 24" PVC Tubing with Screen & Tie
8	817-1150M	150 sq. ft. Cartridge
	817-1200M	200 sq. ft. Cartridge
9	515-7257	Body – Filter Bottom
9a	519-7470	Filter Wrench (see Detail 7)
10	417-6151	1 1/2" MPT x 1 1/2" Male Smooth Hose Adapter
	419-3600	1 1/2" NPT Extended Coupler
11	805-0224	O-Ring
12	500-5300	Drain Assembly
12a	505-2030	Drain Cap
13	672-7401	Eco-Kleer Base
13a	819-0004	#10 x 1" S/S Phillips Head Screw
14	415-5001	2" Union Nut
15	419-7241	Coupling
16	711-4010	2" Union Gasket
17	PK1100	1 HP – 1-Speed Hi-Flo Pump
	PK1150	1 1/2 HP – 1-Speed Hi-Flo Pump
	PK1200	2 HP – 1-Speed Hi-Flo Pump
18	429-7221	Snap Pin
19	310-6500	6" Trap – 1 1/2" Buttress x 2" Flange
20	319-3260	6" Trap Lid
21	805-0436	O-Ring
22	319-3230	6" Basket Assembly
23	872-9010	Hoses
24	WV001H	Gate Valve
--	810-0068-WAT	Instruction Sheet



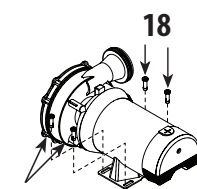
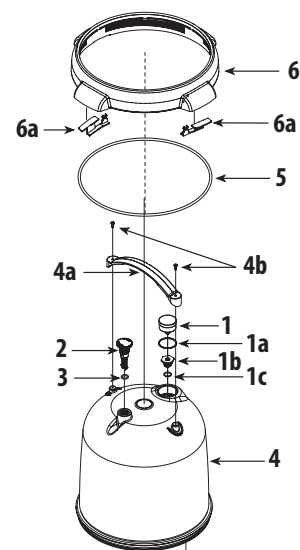
DETAIL 6



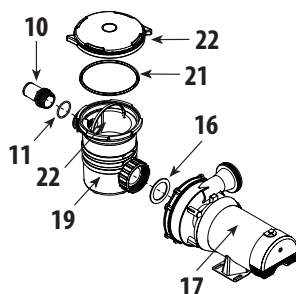
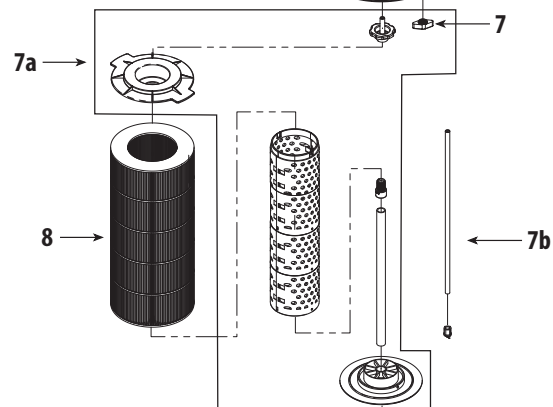
DETAIL 8



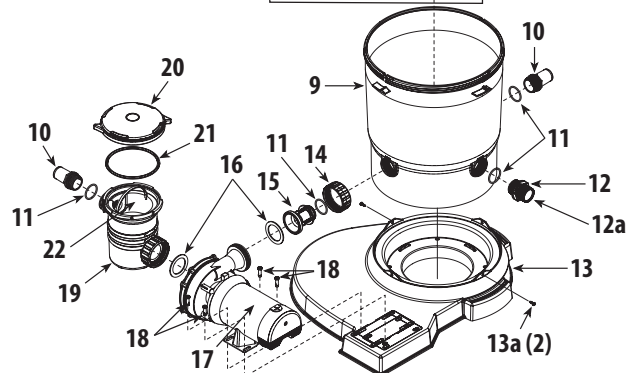
DETAIL 7



DETAIL 4



DETAIL 5



## CLEANING INSTRUCTIONS

If the pressure gauge on your filter reads 5 PSI or higher than the original starting pressure, the filter needs to be cleaned. The Eco-Kleer Cartridge Filter System features the exclusive 1-2-3 Safety Locking System to ensure safe and simple filter maintenance.

1. Turn off pump. **WARNING: Never attempt to clean filter while pump is running. This is a pressurized vessel. It could cause severe injury or harm to your person.** Plug skimmer and pool return lines or drain pool water level to below pool return line.
2. Slowly open the air release knob on top of filter until the pressure gauge reads "0". Open drain cap at bottom of filter and allow water to flow.

3. Press the yellow safety latch on the underside of the locking nut and turn the nut counterclockwise to remove the lid. Rinse the cartridge element with a garden hose. There is no need to remove the element from the filter.
4. Reassemble lid and follow start-up procedures from original instructions.

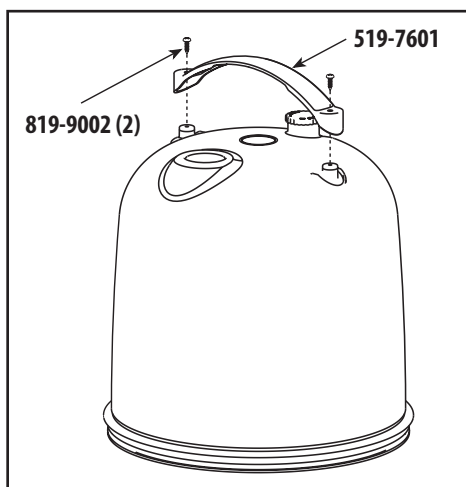
**My Original Starting Pressure is \_\_\_\_\_ PSI (Pounds per Square Inch). I should clean the filter at \_\_\_\_\_ PSI.**

## LIMITED WARRANTY

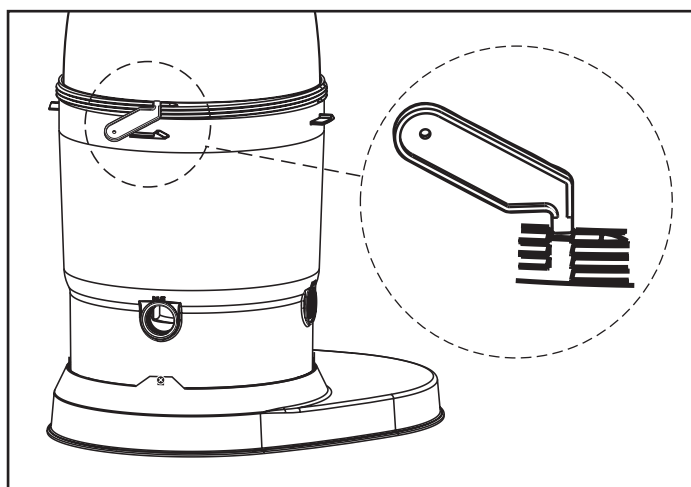
Waterway Plastics manufactures its products and equipment in accordance with very high standards of workmanship. We use the best materials available and maintain the highest quality procedures practical in the industry. In accordance, Waterway warrants its products as follows: Warranty only applies to OEMs and Distributors of Waterway.



# INSTALLATION INSTRUCTIONS FOR ATTACHING ECO-KLEER FILTER LID HANDLE AND REMOVAL OF LID ASSEMBLY



Using a Phillips-head screwdriver, screw the two (2) provided Phillips-head screws through the handle assembly and into the filter lid, as shown. Make snug; DO NOT overtighten.



## TO REMOVE LID ASSEMBLY:

Remove lock-nut assembly. Insert wrench in notch between filter body and lid assembly as shown. Twist wrench to separate.

# INSTALLATION INSTRUCTIONS FOR ATTACHING ECO-KEER FILTER BODY TO THE ECO-KLEER FILTER BASE

1. Align the drain port of the filter body to the base as shown.
2. Use one of the two self-threading screws provided. Screw it into the filter body as shown.
3. Using the other self-threading screw, screw it into the filter body on the opposite side.
4. Continue the installation of the filter according to the filter instructions.



## WARRANTY

For product registration visit: [www.waterwayplastics.com](http://www.waterwayplastics.com).  
For Warranty questions or claims please contact point of purchase.

