

# **CLEAR** **WATER** <sup>TM</sup> **DE**



## **DELUXE SYSTEM** **OWNER'S MANUAL**

## CLEARWATER II D.E. FILTER SYSTEM OWNER'S MANUAL

Our ClearWater II D.E. Filter System is shipped from Waterway complete with everything you need right in the box. Assemble filter system only after above-ground pool is installed. Fill pool with water. Do not raise water level above pool return line.

The pool equipment should be located between pool skimmer and return line. The filtration system should not be closer than 2 ft. and not further than 5 ft. from the pool. The ClearWater II D.E. Filter System needs to be on a completely flat surface (e.g. patio block, cement slab, etc.). The pump will require a 110 volt/20 amp service.



**WARNING: A GFCI is required. Follow national and local building and safety codes.**

Before opening shipping carton, make sure box is in the upright position. Inside the carton, you will find:

1. One base
2. One pump (packaged in separate box)
3. One filter
4. Two lengths of 6 ft. hose
5. One bag with fittings

## INSTALLATION INSTRUCTIONS

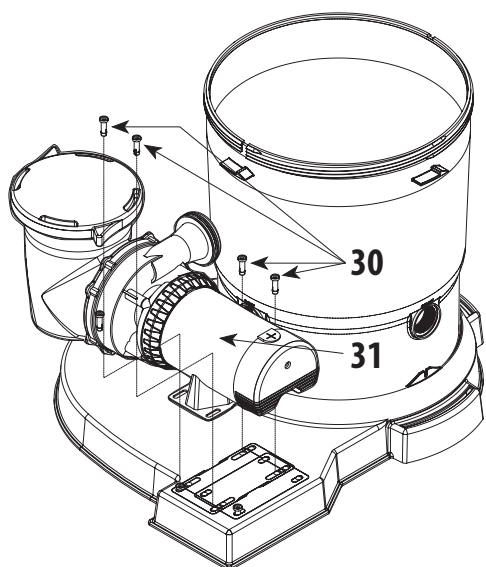


**WARNING! READ ALL INSTRUCTIONS AND WARNING LABELS BEFORE OPERATING FILTER!**

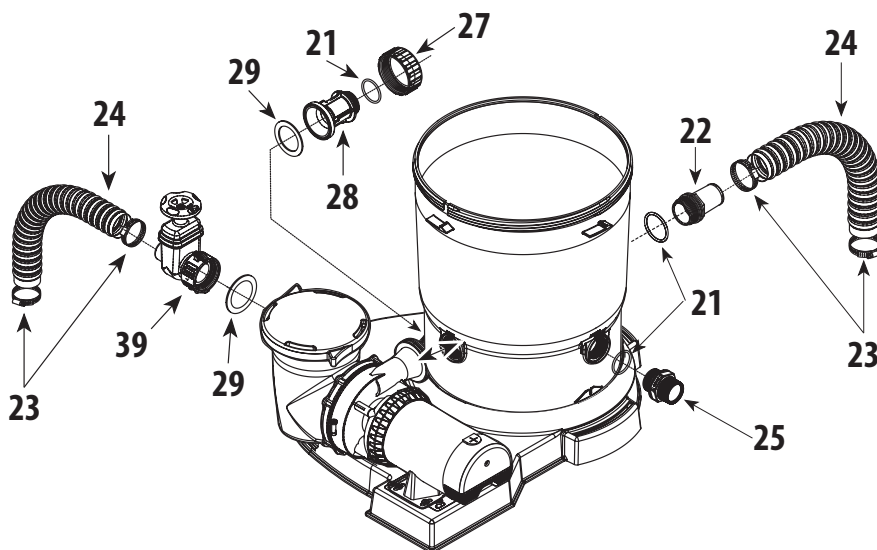
1. Place filter and base on a level, secure surface. Open fittings bag and remove coupling assembly (Detail 2). Assemble 2" gasket, coupling, coupling o-ring, and 2" union nut, and thread into inlet side of filter.
2. Open pump trap lid and remove 2" gasket. Place 2" gasket into union nut. Hand tighten union nut to suction side of pump (Detail 2).
3. Place the pump on the base to the left of the filter. The pump should align with coupling on filter side marked "Inlet". There is no need to disassemble filter or pump assemblies.
4. Thread 2" union nut to pump discharge (Detail 2). Thread gate valve with gasket to pump trap suction side (Detail 2).
5. Secure pump to base using the pin and anchor assemblies (Detail 1).
6. From the fittings package, remove 1 1/2" hose adapter and o-ring (Detail 2). Thread into outlet side of the filter tank.

7. Remove 4 hose clamps from the fittings bag. Select one of the hose lengths and slip one clamp over the end of the hose adapter. Place the end of the hose on to the gate valve (pump suction) and the other end to the hose adapter end of the pool skimmer. Repeat steps with filter outlet to pool return.
8. Remove the lid handle, #1, from the fittings bag and attach it to the top of the lid assembly, #12, as shown (Detail 3). Secure ClearWater Filter to ClearWater Filter Base using #26a Phillips-head screws (2), (Detail 4 & 5). Fill pool until water level is halfway up length of skimmer throat.
9. Open air release knob. Plug in and turn on pump. Air will pass out of the filter through the air release knob. Once water discharges from knob, close it.

**NOTE:** To remove lid assembly, take off filter nut, #3, insert filter wrench, #20a, in notch between filter body, #20 and lid assembly, #12, twist and separate as shown in Detail 5.



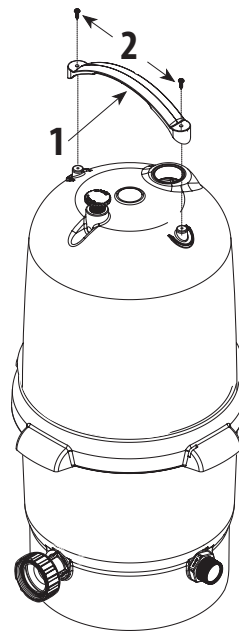
**DETAIL 1**



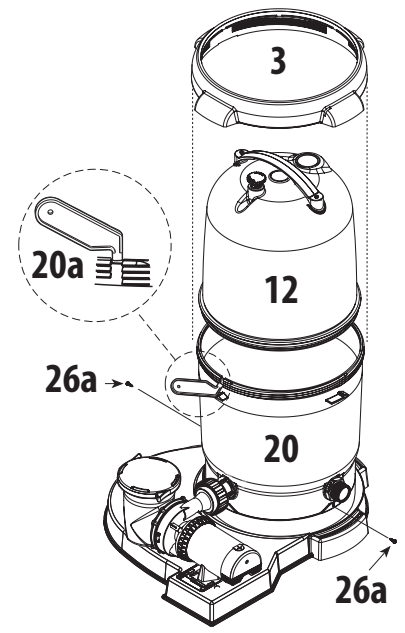
**DETAIL 2**

# CLEARWATER II D.E FILTER SYSTEM REPLACEMENT PARTS

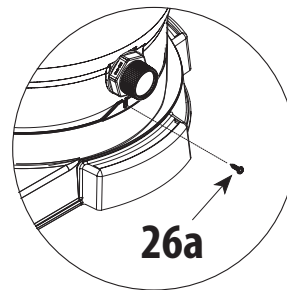
Item	Part No.	Description
1	<b>519-7601</b>	Lid Handle
2	<b>819-9002</b>	#12 x 3/4" S/S Phillips Head Screw
3	<b>718-7251</b>	Filter Locknut Assembly
4	<b>602-0200</b>	Air Relief Plug
5	<b>805-0207</b>	O-Ring - Air Relief
6	<b>830-4000SS</b>	Pressure Gauge
7	<b>519-7451</b>	Handle Assembly (2)
8	<b>805-0224</b>	O-Ring - Air Relief
9	<b>519-7430</b>	Gauge - Fitting Adapter
10	<b>805-0117SD</b>	O-Ring - Adapter
11	<b>805-0460</b>	Lid O-Ring
12	<b>519-7411</b>	Lid Assembly (small)
	<b>519-7401</b>	Lid Assembly (large)
13	<b>519-7441</b>	Wing-Nut
14	<b>500-7310</b>	Screen/Sock Assembly
15	<b>718-7210</b>	Tie Nut - D.E.
16	<b>419-7241</b>	Plug - 2" x 1 1/2" MPT
17	<b>519-7269</b>	Locator - Top Grids - D.E.
18	<b>550-7210</b>	Grids - 12 sq. ft. D.E. (7)
	<b>550-7220</b>	Grids - 18 sq. ft. D.E. (7)
19	<b>550-7100</b>	Base Assembly - 12 sq. ft.
	<b>550-7120</b>	Base Assembly - 18 sq. ft.
20	<b>515-7251</b>	Filter Body - Bottom
20a	<b>519-7470</b>	Filter Wrench (see Detail 5)
21	<b>805-0224</b>	O-Ring (3)
22	<b>417-6241</b>	1 1/2" MPT x 1 1/2" Male Smooth Hose Adapter
23	<b>872-0010</b>	Hose Clamp - Stainless Steel
24	<b>872-9002</b>	Corrugated Hose - Black
25	<b>500-5300</b>	Drain Assembly
26	<b>672-7401</b>	ClearWater II Base
26a	<b>819-0044</b>	#10 x 1" S/S Phillips Head Screw (2)
27	<b>415-5001</b>	2" Union Nut
28	<b>419-7241</b>	Coupling
29	<b>711-4010</b>	2" Union Gasket (2)
30	<b>429-7221</b>	Snap Pin (2)
31	<b>PSP1100</b>	1 HP - 1-Speed - Supreme Pump
	<b>PSP1150</b>	1 1/2 HP - 1-Speed - Supreme Pump
	<b>PSP1200</b>	2 HP - 1-Speed - Supreme Pump
	<b>PSP2100</b>	1 HP - 2-Speed - Supreme Pump
	<b>PSP2150</b>	1 1/2 HP - 2-Speed - Supreme Pump
	<b>PSP2200</b>	2 HP - 2-Speed - Supreme Pump
32	<b>311-1520</b>	Faceplate - Supreme Pump
33	<b>805-0330</b>	O-Ring
34	<b>319-1510</b>	Supreme Pump Trap Body
35	<b>319-1540</b>	C-Clip - Supreme Pump
36	<b>319-1530</b>	Supreme Trap Basket
37	<b>805-0439</b>	O-Ring
38	<b>511-1310</b>	Trap Lid
39	<b>WV001H</b>	Gate Valve



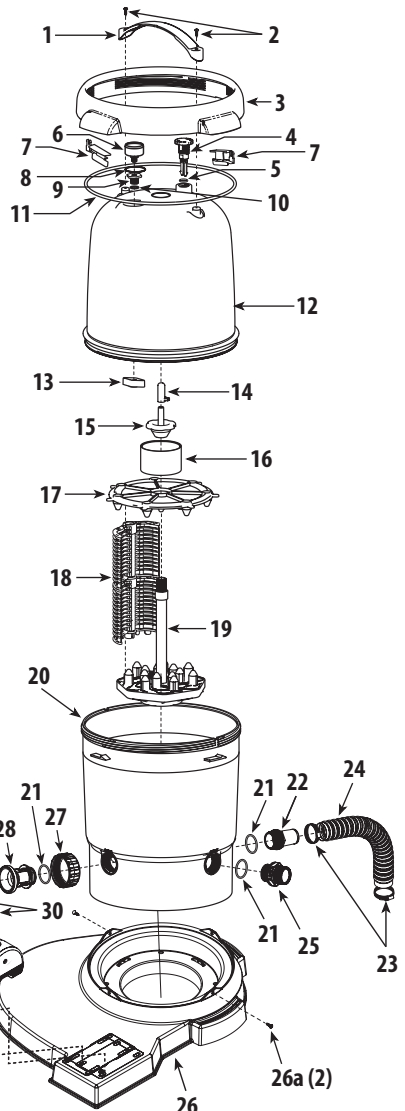
DETAIL 3



DETAIL 4



DETAIL 5



## CLEANING INSTRUCTIONS

If the pressure gauge on your filter reads 5 PSI or higher than the original starting pressure, the filter needs to be cleaned. The ClearWater II D.E. Filter System features the exclusive 1-2-3 Safety Locking System to ensure safe and simple filter maintenance.

1. Turn off pump. **WARNING: Never attempt to clean filter while pump is running. This is a pressurized vessel. It could cause severe injury or harm to your person.** Plug skimmer and pool return lines or drain pool water level to below pool return line.
2. Slowly open the air release knob on top of filter until the pressure gauge reads "0". Open drain cap at bottom of filter and allow water to flow.

3. Press the yellow safety latch on the underside of the locking nut and turn the nut counterclockwise to remove the lid. Rinse the D.E. grids with a garden hose. There is no need to remove the element from the filter.
4. Reassemble lid and follow start-up procedures from original instructions.

**My Original Starting Pressure is \_\_\_\_\_ PSI (Pounds per Square Inch). I should clean the filter at \_\_\_\_\_ PSI.**

## WARRANTY

**For product registration visit: [www.waterwayplastics.com](http://www.waterwayplastics.com).  
For Warranty questions or claims please contact point of purchase.**



2200 East Sturgis Road, Oxnard CA 93030 • Phone 805.981.0262 • Fax 805.981.9403  
[www.waterwayplastics.com](http://www.waterwayplastics.com) • [waterway@waterwayplastics.com](mailto:waterway@waterwayplastics.com)