

TWM CARTRIDGE FILTER SYSTEM INSTRUCTIONS

ASSEMBLY INSTRUCTIONS

1. Remove pump, filter and parts from box.
2. Slide filter base (#6) onto filter bottom (#7).
3. With O-Ring (#9) in place, thread filter onto pump. Tighten securely, but do not over-tighten.
4. Place O-Ring (#9) onto desired tailpiece and assemble tailpiece to output of filter using 1 ½" union nut.
5. Apply Teflon plumbers tape to hose adapter threads (#11). Thread into intake of pump. If using a trap, see A2. (optional)
6. Apply Teflon plumbers tape to pressure gauge threads and thread into filter lid. Do not over-tighten.
7. Attach corrugated hose to pump/filter using hose clamps to secure.
8. Attach corrugated hose ends to pool skimmer and pool return, using hose clamps to secure (intake to skimmer, output to return).



WARNING: NEVER OPEN FILTER LID WHILE PUMP IS RUNNING

OPERATING INSTRUCTIONS

1. Inspect and secure all fittings and connectors.
 2. Bleed air out of filter before unscrewing bleed screw on top of filter lid, one complete turn. Close screw when water begins to come out.
 3. Plug pump into a GFI (Ground Fault Indicator) Socket.
- NOTE: If then pump is running, but does not appear to be pumping water, continue to bleed air out of filter by unscrewing air bleed screw one turn.**

CLEANING INSTRUCTIONS

NOTE: Filter cartridge should be cleaned when pressure exceeds 15 PSI higher than starting point when new/clean.

Plug skimmer intake and return line fitting to stop flow of water from returning backward and purging out of canister while cleaning filter. (Use 1 ½" thread plug or gate valve sold separately (WV001U). See local dealer for more information.)

TWM CARTRIDGE FILTER SYSTEM INSTRUCTIONS

ASSEMBLY INSTRUCTIONS

1. Remove pump, filter and parts from box.
2. Slide filter base (#6) onto filter bottom (#7).
3. With O-Ring (#9) in place, thread filter onto pump. Tighten securely, but do not over-tighten.
4. Place O-Ring (#9) onto desired tailpiece and assemble tailpiece to output of filter using 1 ½" union nut.
5. Apply Teflon plumbers tape to hose adapter threads (#11). Thread into intake of pump. If using a trap, see A2. (optional)
6. Apply Teflon plumbers tape to pressure gauge threads and thread into filter lid. Do not over-tighten.
7. Attach corrugated hose to pump/filter using hose clamps to secure.
8. Attach corrugated hose ends to pool skimmer and pool return, using hose clamps to secure (intake to skimmer, output to return).



WARNING: NEVER OPEN FILTER LID WHILE PUMP IS RUNNING

OPERATING INSTRUCTIONS

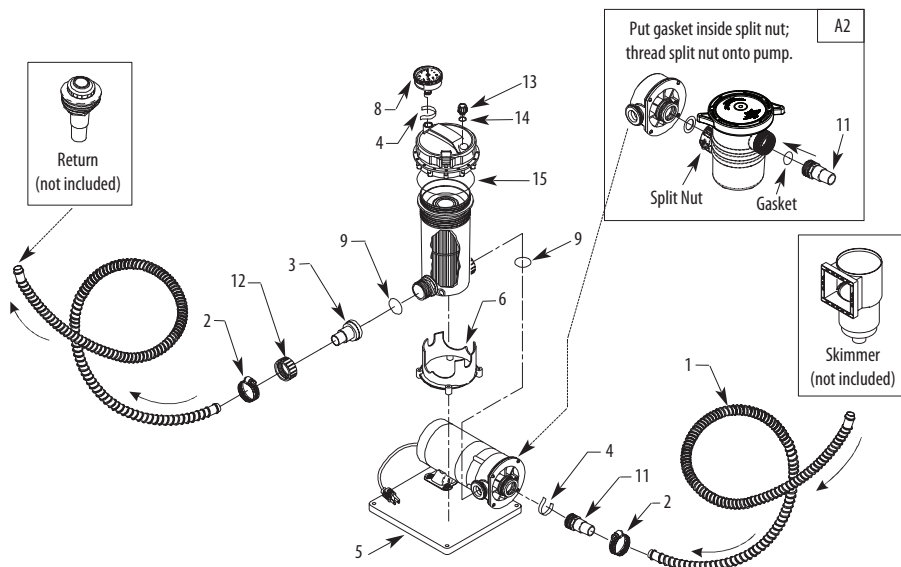
1. Inspect and secure all fittings and connectors.
 2. Bleed air out of filter before unscrewing bleed screw on top of filter lid, one complete turn. Close screw when water begins to come out.
 3. Plug pump into a GFI (Ground Fault Indicator) Socket.
- NOTE: If then pump is running, but does not appear to be pumping water, continue to bleed air out of filter by unscrewing air bleed screw one turn.**

CLEANING INSTRUCTIONS

NOTE: Filter cartridge should be cleaned when pressure exceeds 15 PSI higher than starting point when new/clean.

Plug skimmer intake and return line fitting to stop flow of water from returning backward and purging out of canister while cleaning filter. (Use 1 ½" thread plug or gate valve sold separately (WV001U). See local dealer for more information.)

TWM CARTRIDGE FILTER REPLACEMENT PARTS

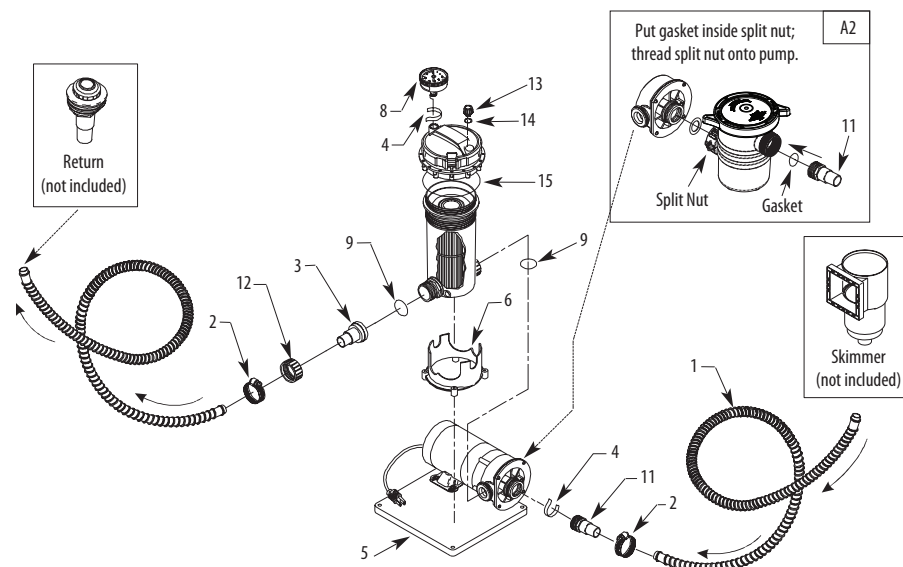


Item	Part Number	Quantity	Description
1	872-9002	2	Corrugated Hose
2	872-0011	4	Hose Clamp
3	417-6041	1	1 ½" TP Hose Adapter
4	902-2000	1	Teflon Tape
5	672-1010	1	Pump Base
6	672-1051	1	Filter Mount Base
7	--	1	Top Load Filter Housing Assembly
8	830-3000	1	Gauge
9	805-0226	2	O-Ring
10	817-5000	--	Filter Cartridge - 50 sq. ft.
	817-2500	--	Filter Cartridge - 25 sq. ft.
11	417-6061	1	1 ½" MPT Hose Adapter
12	415-4001	1	1 ½" Union Nut
13	715-1001	1	Air Relief Plug
14	805-0114	1	O-Ring, Air Relief Plug
15	805-0360	1	O-Ring, Filter Lid

WARRANTY

For product registration visit:
www.waterwayplastics.com.
For Warranty questions or claims
please contact point of purchase.

TWM CARTRIDGE FILTER REPLACEMENT PARTS



Item	Part Number	Quantity	Description
1	872-9002	2	Corrugated Hose
2	872-0011	4	Hose Clamp
3	417-6041	1	1 ½" TP Hose Adapter
4	902-2000	1	Teflon Tape
5	672-1010	1	Pump Base
6	672-1051	1	Filter Mount Base
7	--	1	Top Load Filter Housing Assembly
8	830-3000	1	Gauge
9	805-0226	2	O-Ring
10	817-5000	--	Filter Cartridge - 50 sq. ft.
	817-2500	--	Filter Cartridge - 25 sq. ft.
11	417-6061	1	1 ½" MPT Hose Adapter
12	415-4001	1	1 ½" Union Nut
13	715-1001	1	Air Relief Plug
14	805-0114	1	O-Ring, Air Relief Plug
15	805-0360	1	O-Ring, Filter Lid

WARRANTY

For product registration visit:
www.waterwayplastics.com.
For Warranty questions or claims
please contact point of purchase.



2200 East Sturgis Road, Oxnard CA 93030 • Phone 805.981.0262 • Fax 805.981.9403
www.waterwayplastics.com • waterway@waterwayplastics.com

810-0035.0425



2200 East Sturgis Road, Oxnard CA 93030 • Phone 805.981.0262 • Fax 805.981.9403
www.waterwayplastics.com • waterway@waterwayplastics.com

©2025 Waterway Plastics

810-0035.0425

©2025 Waterway Plastics