

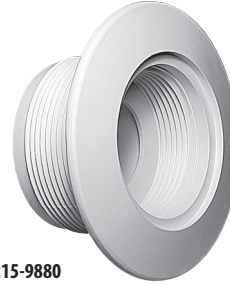


Fittings / Return Wall Fittings

Fittings



215-9170B



215-9880



215-9150



215-9890



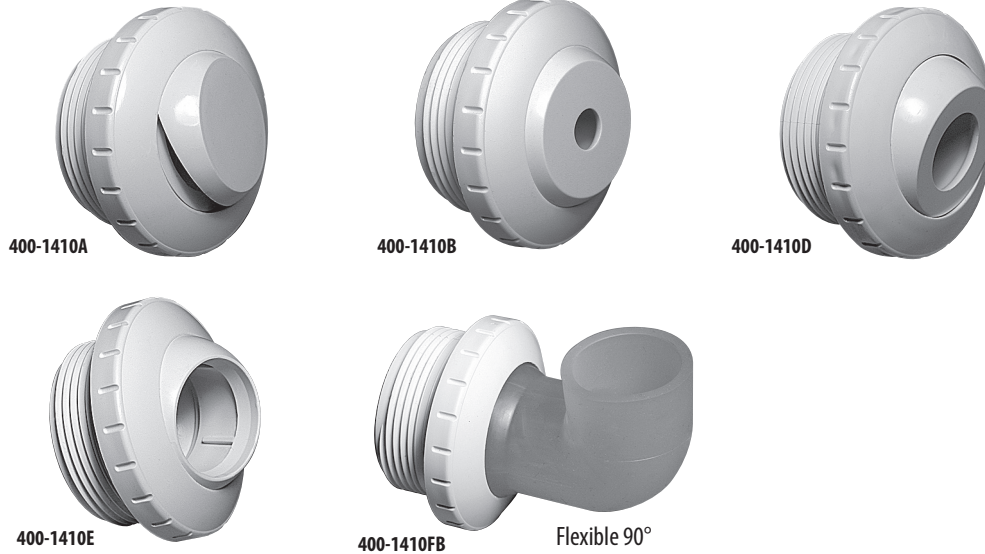
400-9170



400-9150B

Return Wall Fittings

Part No.	Description	Color	Case Weight	Case Quantity	List (US \$)
215-9170B	Return Wall Fitting 1 1/2" FPT Thru	White	8 lbs.	50 (indiv.)	5.18
215-9170	Return Wall Fitting 1 1/2" FPT Thru	White	28 lbs.	200 (bulk)	4.56
215-9171	Return Wall Fitting 1 1/2" FPT Thru	Black	28 lbs.	200 (bulk)	5.04
215-9177	Return Wall Fitting 1 1/2" FPT Thru	Gray	28 lbs.	200 (bulk)	5.04
215-9179-DKG	Return Wall Fitting 1 1/2" FPT Thru	Dark Gray	28 lbs.	200 (bulk)	5.04
215-9179-BEI	Return Wall Fitting 1 1/2" FPT Thru	Beige	28 lbs.	200 (bulk)	5.04
215-9880	Return Wall Fitting 1 1/2" FPT x 1" S	White	40 lbs.	200 (bulk)	5.35
215-9881	Return Wall Fitting 1 1/2" FPT x 1" S	Black	40 lbs.	200 (bulk)	5.80
215-9887	Return Wall Fitting 1 1/2" FPT x 1" S	Gray	40 lbs.	200 (bulk)	5.80
215-9889-DKG	Return Wall Fitting 1 1/2" FPT x 1" S	Dark Gray	40 lbs.	200 (bulk)	5.80
215-9150B	Return Wall Fitting 1 1/2" FPT x 1 1/2" S	White	8 lbs.	50 (indiv.)	5.04
215-9150	Return Wall Fitting 1 1/2" FPT x 1 1/2" S	White	28 lbs.	200 (bulk)	4.56
215-9151	Return Wall Fitting 1 1/2" FPT x 1 1/2" S	Black	28 lbs.	200 (bulk)	5.04
215-9157	Return Wall Fitting 1 1/2" FPT x 1 1/2" S	Gray	28 lbs.	200 (bulk)	5.04
215-9159-DKG	Return Wall Fitting 1 1/2" FPT x 1 1/2" S	Dark Gray	28 lbs.	200 (bulk)	5.04
215-9159-BEI	Return Wall Fitting 1 1/2" FPT x 1 1/2" S	Beige	28 lbs.	200 (bulk)	5.04
215-9159-DKB	Return Wall Fitting 1 1/2" FPT x 1 1/2" S	Dark Blue	28 lbs.	200 (bulk)	5.04
215-9890	Return Wall Fitting 1 1/2" FPT x 2" Insider (fits inside 2" pipe)	White	40 lbs.	60 (bulk)	7.07
215-9891	Return Wall Fitting 1 1/2" FPT x 2" Insider (fits inside 2" pipe)	Black	40 lbs.	60 (bulk)	7.73
215-9897	Return Wall Fitting 1 1/2" FPT x 2" Insider (fits inside 2" pipe)	Gray	40 lbs.	60 (bulk)	7.73
215-9899-DKG	Return Wall Fitting 1 1/2" FPT x 2" Insider (fits inside 2" pipe)	Dark Gray	40 lbs.	60 (bulk)	7.73
400-9170B	Return Wall Fitting Assembly with Nut and Gasket 1 1/2" FPT Thru	White	13 lbs.	50 (indiv.)	10.23
400-9171B	Return Wall Fitting Assembly with Nut and Gasket 1 1/2" FPT Thru	Black	13 lbs.	50 (indiv.)	10.67
400-9177B	Return Wall Fitting Assembly with Nut and Gasket 1 1/2" FPT Thru	Gray	13 lbs.	50 (indiv.)	10.67
400-9170	Return Wall Fitting Assembly with Nut and Gasket 1 1/2" FPT Thru	White	12 lbs.	50 (bulk)	9.43
400-9171	Return Wall Fitting Assembly with Nut and Gasket 1 1/2" FPT Thru	Black	12 lbs.	50 (bulk)	9.89
400-9177	Return Wall Fitting Assembly with Nut and Gasket 1 1/2" FPT Thru	Gray	12 lbs.	50 (bulk)	9.89
400-9150B	Return Wall Fitting Assembly with Nut and Gasket 1 1/2" FPT x 1 1/2" S	White	13 lbs.	50 (indiv.)	10.23
400-9150	Return Wall Fitting Assembly with Nut and Gasket 1 1/2" FPT x 1 1/2" S	White	12 lbs.	50 (bulk)	9.43
400-9151	Return Wall Fitting Assembly with Nut and Gasket 1 1/2" FPT x 1 1/2" S	Black	12 lbs.	50 (bulk)	9.89
400-9157	Return Wall Fitting Assembly with Nut and Gasket 1 1/2" FPT x 1 1/2" S	Gray	12 lbs.	50 (bulk)	9.89



Threaded Eyeball Fittings - 1 1/2" MPT

Part No.	Description	Color	Case Weight	Case Quantity	List (US \$)
400-1410AB	Slotted Eyeball Opening (<i>bagged</i>)	White	10.50 lbs.	100 (indiv.)	5.68
400-1417AB	Slotted Eyeball Opening (<i>bagged</i>)	Gray	10.50 lbs.	100 (indiv.)	6.75
400-1410A	Slotted Eyeball Opening	White	12.55 lbs.	125 (bulk)	5.04
400-1411A	Slotted Eyeball Opening	Black	12.55 lbs.	125 (bulk)	6.11
400-1417A	Slotted Eyeball Opening	Gray	12.55 lbs.	125 (bulk)	6.11
400-1419A-DK	Slotted Eyeball Opening	Dark Gray	12.55 lbs.	125 (bulk)	6.11
400-1410BB	3/8" Eyeball Opening (<i>bagged</i>)	White	10.75 lbs.	100 (indiv.)	5.04
400-1410B	3/8" Eyeball Opening	White	12.45 lbs.	125 (bulk)	4.40
400-1411B	3/8" Eyeball Opening	Black	12.45 lbs.	125 (bulk)	4.87
400-1417B	3/8" Eyeball Opening	Gray	12.45 lbs.	125 (bulk)	4.87
400-1410CB	1/2" Eyeball Opening (<i>bagged</i>)	White	10.70 lbs.	100 (indiv.)	5.04
400-1410C	1/2" Eyeball Opening	White	12.55 lbs.	125 (bulk)	4.40
400-1411C	1/2" Eyeball Opening	Black	12.55 lbs.	125 (bulk)	4.87
400-1417C	1/2" Eyeball Opening	Gray	12.55 lbs.	125 (bulk)	4.87
400-1419C-DK	1/2" Eyeball Opening	Dark Gray	12.55 lbs.	125 (bulk)	4.87
400-1410DB	3/4" Eyeball Opening (<i>bagged</i>)	White	10.35 lbs.	100 (indiv.)	5.04
400-1411DB	3/4" Eyeball Opening (<i>bagged</i>)	Black	10.35 lbs.	100 (indiv.)	5.52
400-1417DB	3/4" Eyeball Opening (<i>bagged</i>)	Gray	10.35 lbs.	100 (indiv.)	5.52
400-1410D	3/4" Eyeball Opening	White	12 lbs.	125 (bulk)	4.40
400-1411D	3/4" Eyeball Opening	Black	12 lbs.	125 (bulk)	4.87
400-1417D	3/4" Eyeball Opening	Gray	12 lbs.	125 (bulk)	4.87
400-1419D-DK	3/4" Eyeball Opening	Dark Gray	11.65 lbs.	125 (bulk)	4.87
400-1419D-BEI	3/4" Eyeball Opening	Beige	12 lbs.	125 (bulk)	4.87
400-1410EB	1" Eyeball Opening (<i>bagged</i>)	White	10.55 lbs.	100 (indiv.)	5.04
400-1411EB	1" Eyeball Opening (<i>bagged</i>)	Black	10.55 lbs.	100 (indiv.)	5.52
400-1417EB	1" Eyeball Opening (<i>bagged</i>)	Gray	10.55 lbs.	100 (indiv.)	5.52
400-1410E	1" Eyeball Opening	White	12.55 lbs.	125 (bulk)	4.40
400-1411E	1" Eyeball Opening	Black	12.55 lbs.	125 (bulk)	4.87
400-1417E	1" Eyeball Opening	Gray	12.55 lbs.	125 (bulk)	4.87
400-1419E-DK	1" Eyeball Opening	Dark Gray	12.55 lbs.	125 (bulk)	4.87
400-1419E-BEI	1" Eyeball Opening	Beige	12.55 lbs.	125 (bulk)	4.87
400-1419E-DKB	1" Eyeball Opening	Dark Blue	12.55 lbs.	125 (bulk)	5.72
400-1410FB	1" 90° Return Eye (<i>bagged</i>)	White	12 lbs.	125 (indiv.)	5.04
400-1410F	1" 90° Return Eye	White	9.05 lbs.	70 (bulk)	4.47



Fittings / Insert Inlet Eyeball Fittings, Metal Wall Form Fitting & Floor Return

Fittings



400-1420E

Available in:

- White
- Gray
- Dark Gray
- Black

Insert Inlet Eyeball Fittings - 1 1/2"

Part No.	Description	Color	Case Weight	Case Quantity	List (US \$)
400-1420DB	3/4" Eyeball Opening (<i>bagged</i>)	White	8 lbs.	75 (indiv.)	7.84
400-1420EB	1" Eyeball Opening (<i>bagged</i>)	White	7.7 lbs.	75 (indiv.)	7.84
400-1420D	3/4" Eyeball Opening	White	8.29 lbs.	75 (bulk)	7.23
400-1421D	3/4" Eyeball Opening	Black	8.29 lbs.	75 (bulk)	8.00
400-1427D	3/4" Eyeball Opening	Gray	8.29 lbs.	75 (bulk)	8.00
400-1429D-DK	3/4" Eyeball Opening	Dark Gray	8.14 lbs.	75 (bulk)	8.62
400-1420E	1" Eyeball Opening	White	8.36 lbs.	75 (bulk)	7.23
400-1421E	1" Eyeball Opening	Black	8.12 lbs.	75 (bulk)	8.00
400-1427E	1" Eyeball Opening	Gray	7.85 lbs.	75 (bulk)	8.00
400-1429E-DK	1" Eyeball Opening	Dark Gray	8.12 lbs.	75 (bulk)	8.00
400-1420A	Slotted Opening	White	8 lbs.	75 (bulk)	7.84
400-1427A	Slotted Opening	Gray	8 lbs.	75 (bulk)	8.62
400-1429A-DK	Slotted Opening	Dark Gray	8 lbs.	75 (bulk)	8.62



400-9010B

Metal Wall Form Return Fitting - 1 1/2"

Part No.	Description	Color	Case Weight	Case Quantity	List (US \$)
400-9010B	1 1/2" NPT Return Fitting for Metal Pool Wall	White	12.31 lbs.	25	15.18



640-9000

In-Floor Return

Part No.	Description	Color	List (US \$)
640-9000	Floor Return	White	32.59
640-9007	Floor Return	Gray	32.59



400-8300



400-8310



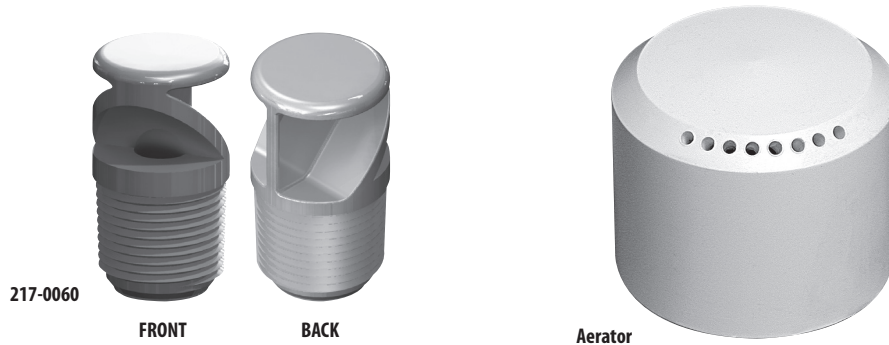
400-8320



400-9470

Fiberglass Wall Fitting - Deep Socket

Part No.	Description	List (US \$)
400-8300	Fiberglass Wall Fitting, Deep Socket Adapter - HWD Version	7.61
400-8310	Fiberglass Wall Fitting with Eyeball, Deep Socket Adapter - HA Version	12.21
400-8320	Gasket Kit (can work with either kit)	2.74
400-9470	1 Pc Fiberglass Wall Fitting LG Third with Eyeball	10.99



217-0060

FRONT

BACK

Aerator

Aerators

Part No.	Color	Dimensions	Case Quantity	List (US \$)
715-1910	White	ø 1.62" W x 1.25" H	100 (bulk)	7.78
715-1911	Black	ø 1.62" W x 1.25" H	100 (bulk)	9.50
715-1917	Gray	ø 1.62" W x 1.25" H	100 (bulk)	9.50
715-1919-DKG	Dark Gray	ø 1.62" W x 1.25" H	100 (bulk)	9.50
715-1919-BEI	Beige	ø 1.62" W x 1.25" H	100 (bulk)	8.62
217-0060	White	¾" Aerator Spray Nozzle	125	4.43



600-2201

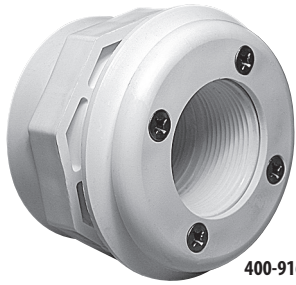
Vac Lock Fittings

Part No.	Description	Color	Case Weight	Case Quantity	List (US \$)
600-2200	Vac Lock Fitting - 1 ½" MPT	White	8.78 lbs.	70	42.21
600-2201	Vac Lock Fitting - 1 ½" MPT	Black	8.78 lbs.	70	42.21
600-2207	Vac Lock Fitting - 1 ½" MPT	Gray	8.78 lbs.	70	42.21
600-2209-DKG	Vac Lock Fitting - 1 ½" MPT	Dark Gray	8.78 lbs.	70	42.21
600-2209-BEI	Vac Lock Fitting - 1 ½" MPT	Beige	8.78 lbs.	70	42.21
600-2209-DKB	Vac Lock Fitting - 1 ½" MPT	Dark Blue	8.78 lbs.	70	42.21
600-2209-LTB	Vac Lock Fitting - 1 ½" MPT	Light Blue	8.78 lbs.	70	42.21



Fittings / Vinyl Liner Fittings

Fittings



400-9160B



218-1430



218-1440

In-Ground Pool Vinyl Liner Return Fittings

Part No.	Description	Color	Case Weight	Case Quantity	List (US \$)
400-9160B	Steel Wall Fitting Assembly with Combo Spacer/Locknut 1 1/2" FPT x 1 1/2" FPT	White	16 lbs.	25 (indiv.)	16.66
400-9161B	Steel Wall Fitting Assembly with Combo Spacer/Locknut 1 1/2" FPT x 1 1/2" FPT	Black	16 lbs.	25 (indiv.)	16.66
400-9167B	Steel Wall Fitting Assembly with Combo Spacer/Locknut 1 1/2" FPT x 1 1/2" FPT	Gray	16 lbs.	25 (indiv.)	16.66
400-9060B	Steel Wall Fitting Assembly with Combo Spacer/Locknut 1 1/2" FPT x 1 1/2" Socket	White	16 lbs.	25 (indiv.)	16.66
400-9061B	Steel Wall Fitting Assembly with Combo Spacer/Locknut 1 1/2" FPT x 1 1/2" Socket	Black	16 lbs.	25 (indiv.)	16.66
400-9067B	Steel Wall Fitting Assembly with Combo Spacer/Locknut 1 1/2" FPT x 1 1/2" Socket	Gray	16 lbs.	25 (indiv.)	16.66
218-1430	Faceplate For Steel Wall Vinyl Liner Wall Fitting with Fitting Assembly	White	--	--	7.07
218-1431	Faceplate For Steel Wall Vinyl Liner Wall Fitting with Fitting Assembly	Black	--	--	7.07
218-1437	Faceplate For Steel Wall Vinyl Liner Wall Fitting with Fitting Assembly	Gray	--	--	7.07
218-1440	Wall Fitting Escutcheon	White	43 lbs.	200 (bulk)	2.83
218-1441	Wall Fitting Escutcheon	Black	43 lbs.	200 (bulk)	3.47
218-1447	Wall Fitting Escutcheon	Gray	43 lbs.	200 (bulk)	3.47
218-1449-DKG	Wall Fitting Escutcheon	Dark Gray	43 lbs.	200 (bulk)	3.47
218-1449-BEI	Wall Fitting Escutcheon	Beige	43 lbs.	200 (bulk)	3.47
218-1449-DKB	Wall Fitting Escutcheon	Dark Blue	43 lbs.	200 (bulk)	4.51



550-9340



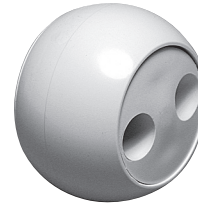
550-9330

Above-Ground Pool Vinyl Liner Return Fittings

Part No.	Description	Color	Case Weight	Case Quantity	List (US \$)
550-9340	Deluxe Return Fitting Assembly 1" Eyeball	White	34.02 lbs.	30 (bulk)	17.61
550-9347	Deluxe Return Fitting Assembly 1" Eyeball	Gray	34.02 lbs.	25 (bulk)	17.61
550-9330	Deluxe Return Fitting Assembly 3/4" Eyeball	White	35.15 lbs.	80 (bulk)	17.61
550-9337	Deluxe Return Fitting Assembly 3/4" Eyeball	Gray	35.15 lbs.	80 (bulk)	17.61



400-1360



400-1300

Rotating Eyeball Fittings

Part No.	Description	Color	Case Weight	Case Quantity	List (US \$)
400-1360	Pulsator Eyeball Fitting 1 1/2" Insert Inlet	White	32.91 lbs.	80	27.48
400-1300	Pulsator Eyeball Assembly	White	5.52 lbs.	75 (indiv.)	27.51

FEATURES:

- Replaces directional eyeball fittings in spas
- Great For Therapy Massage Action!
- The Pulsator fits these wall fittings:
215-9150,215-9170,400-9190,400-9160B



212-9170

Spa Rotating Therapy Massage Fittings

Part No.	Description	Color	Case Weight	Case Quantity	List (US \$)
212-9170	Pulsator - 1 1/2" MPT (fits 1 1/2" FPT wall fittings)	White	6.06 lbs.	50	29.07
212-9171	Pulsator - 1 1/2" MPT (fits 1 1/2" FPT wall fittings)	Black	6.06 lbs.	50	29.07
212-9172	Pulsator - 1 1/2" MPT (fits 1 1/2" FPT wall fittings)	Bone	6.06 lbs.	50	29.07
212-9177	Pulsator - 1 1/2" MPT (fits 1 1/2" FPT wall fittings)	Gray	6.06 lbs.	50	29.07
212-9179-BEI	Pulsator - 1 1/2" MPT (fits 1 1/2" FPT wall fittings)	Beige	6.06 lbs.	50	29.07
212-9179-DKG	Pulsator - 1 1/2" MPT (fits 1 1/2" FPT wall fittings)	Dark Gray	6.06 lbs.	50	29.07
210-3247	10 GPM Hand-Held Jet with Stainless Steel Trim - 1 1/2" MPT (fits 1 1/2" FPT)	Gray	11.07 lbs.	5	79.64

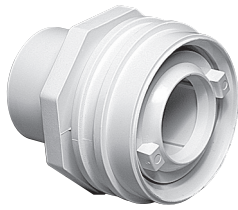


Fittings / Return Fittings

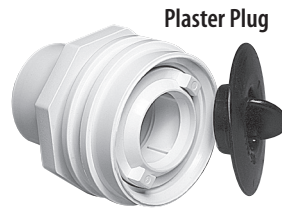
Fittings



400-9180

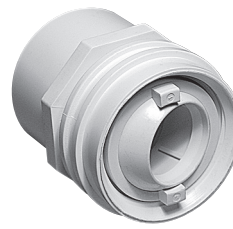


400-9190



400-9190P

Plaster Plug



400-9390



550-9230

Return Fittings

Part No.	Description	Color	Case Weight	Case Quantity	List (US \$)
400-9180	Econ 1" Return Fitting Insider Inlet (fits inside 1" pipe)	White	6 lbs.	100	6.44
400-9181	Econ 1" Return Fitting Insider Inlet (fits inside 1" pipe)	Black	6 lbs.	100	6.44
400-9187	Econ 1" Return Fitting Insider Inlet (fits inside 1" pipe)	Gray	6 lbs.	100	6.44
400-9189-DKG	Econ 1" Return Fitting Insider Inlet (fits inside 1" pipe)	Dark Gray	6 lbs.	100	6.44
400-9190	Flush Mount Return Fitting 1" Socket (fits inside 1 1/2" pipe)	White	25 lbs.	220 (bulk)	12.69
400-9191	Flush Mount Return Fitting 1" Socket (fits inside 1 1/2" pipe)	Black	25 lbs.	220 (bulk)	12.69
400-9192	Flush Mount Return Fitting 1" Socket (fits inside 1 1/2" pipe)	Bone	25 lbs.	220 (bulk)	12.69
400-9197	Flush Mount Return Fitting 1" Socket (fits inside 1 1/2" pipe)	Gray	25 lbs.	220 (bulk)	12.69
400-9199-DKG	Flush Mount Return Fitting 1" Socket (fits inside 1 1/2" pipe)	Dark Gray	25 lbs.	220 (bulk)	12.69
400-9199-BEI	Flush Mount Return Fitting 1" Socket (fits inside 1 1/2" pipe)	Beige	25 lbs.	220 (bulk)	12.69
400-9199-DKB	Flush Mount Return Fitting 1" Socket (fits inside 1 1/2" pipe)	Dark Blue	25 lbs.	220 (bulk)	12.69
400-9190P	Flush Mount Return Fitting with Plaster Plug 1" Socket (fits inside 1 1/2" pipe)	White	27 lbs.	220 (bulk)	13.23
400-9191P	Flush Mount Return Fitting with Plaster Plug 1" Socket (fits inside 1 1/2" pipe)	Black	27 lbs.	220 (bulk)	13.23
400-9192P	Flush Mount Return Fitting with Plaster Plug 1" Socket (fits inside 1 1/2" pipe)	Bone	27 lbs.	220 (bulk)	13.23
400-9197P	Flush Mount Return Fitting with Plaster Plug 1" Socket (fits inside 1 1/2" pipe)	Gray	27 lbs.	220 (bulk)	13.23
400-9199P-DK	Flush Mount Return Fitting with Plaster Plug 1" Socket (fits inside 1 1/2" pipe)	Dark Gray	27 lbs.	220 (bulk)	13.23
400-9199P-BE	Flush Mount Return Fitting with Plaster Plug 1" Socket (fits inside 1 1/2" pipe)	Beige	27 lbs.	220 (bulk)	13.23
400-9199P-DB	Flush Mount Return Fitting with Plaster Plug 1" Socket (fits inside 1 1/2" pipe)	Dark Blue	27 lbs.	220 (bulk)	13.23
400-9390	Flush Mount Return Fitting 1 1/2" Socket	White	38.95 lbs.	190	12.69
400-9391	Flush Mount Return Fitting 1 1/2" Socket	Black	38.95 lbs.	190	12.69
400-9392	Flush Mount Return Fitting 1 1/2" Socket	Bone	38.95 lbs.	190	12.69
400-9397	Flush Mount Return Fitting 1 1/2" Socket	Gray	38.95 lbs.	190	12.69
400-9399-DKG	Flush Mount Return Fitting 1 1/2" Socket	Dark Gray	38.95 lbs.	190	12.69
400-9399-BEI	Flush Mount Return Fitting 1 1/2" Socket	Beige	38.95 lbs.	190	12.69
400-9399-DKB	Flush Mount Return Fitting 1 1/2" Socket	Dark Blue	38.95 lbs.	190	12.69
400-9390P	Flush Mount Return Fitting with Plaster Plug 1 1/2" Socket	White	43.68 lbs.	180	13.18
400-9391P	Flush Mount Return Fitting with Plaster Plug 1 1/2" Socket	Black	43.68 lbs.	180	13.18
400-9392P	Flush Mount Return Fitting with Plaster Plug 1 1/2" Socket	Bone	43.68 lbs.	180	13.18
400-9397P	Flush Mount Return Fitting with Plaster Plug 1 1/2" Socket	Gray	43.68 lbs.	180	13.18
400-9399P-DK	Flush Mount Return Fitting with Plaster Plug 1 1/2" Socket	Dark Gray	43.68 lbs.	180	13.23
400-9399P-BE	Flush Mount Return Fitting with Plaster Plug 1 1/2" Socket	Beige	43.68 lbs.	180	13.23
400-9399P-DB	Flush Mount Return Fitting with Plaster Plug 1 1/2" Socket	Dark Blue	43.68 lbs.	180	13.23
550-9230	Self-Aligning Return Fitting 3/4" Eye (fits inside 1 1/2" pipe)	White	6 lbs.	100 (indiv.)	8.10
550-9231	Self-Aligning Return Fitting 3/4" Eye (fits inside 1 1/2" pipe)	Black	6 lbs.	100 (indiv.)	8.10
550-9237	Self-Aligning Return Fitting 3/4" Eye (fits inside 1 1/2" pipe)	Gray	6 lbs.	100 (indiv.)	8.10
550-9239-DKG	Self-Aligning Return Fitting 3/4" Eye (fits inside 1 1/2" pipe)	Dark Gray	6 lbs.	100 (indiv.)	8.10
550-9240	Self-Aligning Return Fitting 1" Eye (fits inside 1 1/2" pipe)	White	8 lbs.	100 (bulk)	8.10
550-9241	Self-Aligning Return Fitting 1" Eye (fits inside 1 1/2" pipe)	Black	8 lbs.	100 (bulk)	8.10
550-9247	Self-Aligning Return Fitting 1" Eye (fits inside 1 1/2" pipe)	Gray	8 lbs.	100 (bulk)	8.10
550-9249-DKG	Self-Aligning Return Fitting 1" Eye (fits inside 1 1/2" pipe)	Dark Gray	8 lbs.	100 (bulk)	8.10