

18" Spillover Waterfall (675-530X)

ASSEMBLY INSTRUCTIONS

1. Drill a 1 ¼" dia. hole in the center of reservoir.



2. Mount the valve mechanism with gasket on top surface and a nice bead of silicone on the bottom surface of spa. Thread nut into place and tighten securely.



3. Adjust the valve to the off position by turning the valve stem clockwise until it stops hand tight. Do not over tighten!



4. Press the valve knob into the waterfall blade and turn so that the lever is at the 9 o'clock position.



5. Temporarily install the waterfall blade into place while aligning the spline on the valve stem with the valve knob.

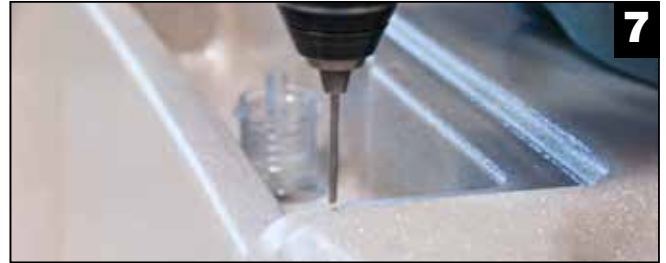


18" Spillover Waterfall (675-530X) – ASSEMBLY INSTRUCTIONS

6. Position the waterfall blade so that it sits concentric to the valve stem and parallels the wall of the spa as close as possible. Hold in position and mark the locations of the six round screw holes located around the perimeter of the waterfall blade. Remove the waterfall blade.



7. Using a 1/8" drill, carefully drill the six holes where marked.



8. On the underneath side of the waterfall blade, apply a heavy bead of silicone in between the silicone groove on the front of the waterfall and a lighter bead of silicone around the outer perimeter of the back side of the waterfall blade as shown.



9. Carefully re-apply the waterfall blade back into position being sure to have the valve in the off position and the lever at 9 o'clock. Gently screw the six #6 X 5/8" screws into place around the outer perimeter of the waterfall. Wipe off any excess silicone.



10. Add another bead of silicone around the outer perimeter of the waterfall blade covering the 10 rectangular shaped holes, but not the front of the blade. Snap the waterfall deco cover into place and clean off any excess silicone.



WARRANTY

For product registration visit: www.waterwayplastics.com.
For Warranty questions or claims please contact point of purchase.



2200 East Sturgis Road, Oxnard CA 93030 • Phone 805.981.0262 • Fax 805.981.9403

www.waterwayplastics.com • waterway@waterwayplastics.com