

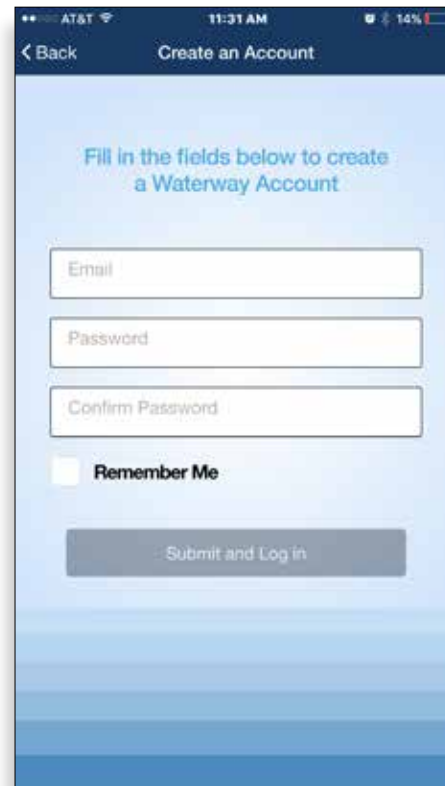
Waterway NEO Spa Control Wi-Fi Operation Instructions



1



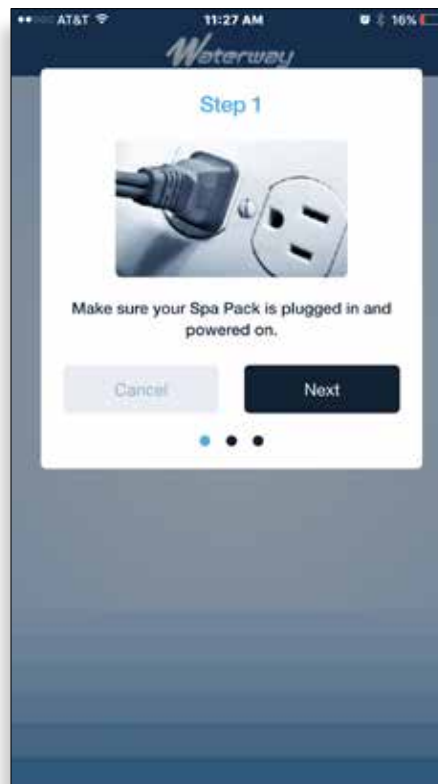
2



3



4



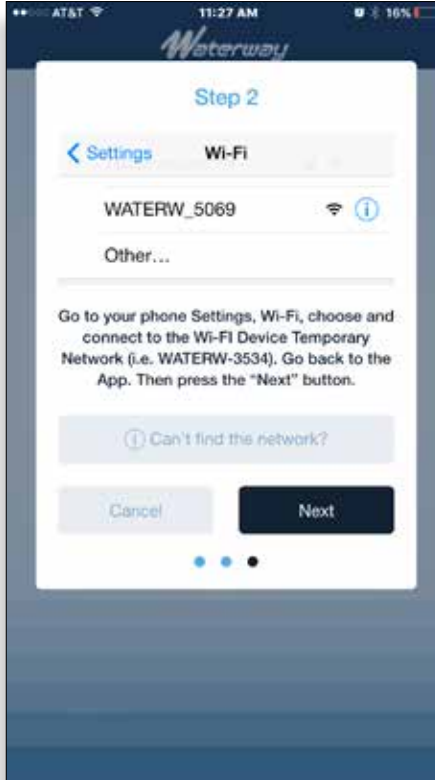
5

1. Download and install the App from App Store or Google Store.
2. Click on **Create an Account**.
3. Enter your email address, password, confirm and submit.
4. Click on **Configure a Device**.
5. Make sure, your Pool Control is powered on and press **Next**.

continued...



Waterway NEO Spa Control Wi-Fi Operation Instructions



6



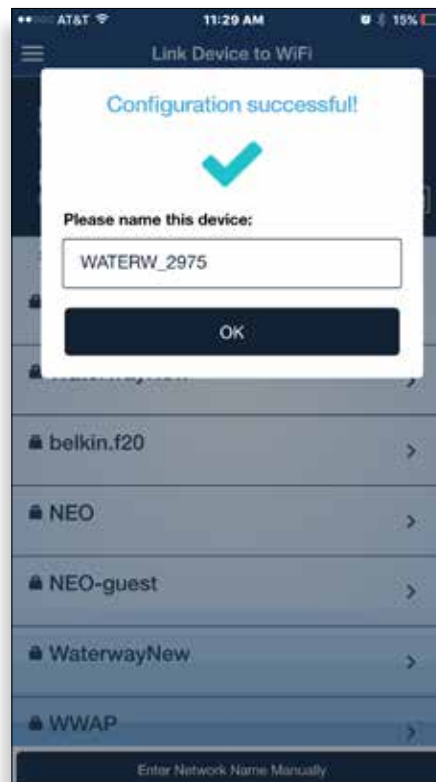
7



8



9



10

6. Go to your phone setting, Wi-Fi, and connect to the Waterway Wi-Fi device temporary network. For example: WATERW-XXXX.
7. Go back to the App, press **Next**.
8. Select your home network from the list (If your network name is not listed, it can be entered manually).
9. Enter your home network password and press **Connect**.
10. Then the device will configure and connect to your home Wi-Fi network and the e Web, Press **OK**.

Waterway NEO Spa Control Wi-Fi Operation Instructions



11



12

11. Click on configured Waterway Wi-Fi device, i.e. WATERW-XXXX.

12. Now you can control your spa from anywhere in the world using your smart phone. You can set the temperature, heating operation mode and turn the light ON/OFF. In order to access the application menu press **ON** in top left corner.



Waterway NEO Spa Control Wi-Fi Operation Instructions



2200 East Sturgis Road, Oxnard, CA 93030 • Phone 805.981.0262 • Fax 805.981.9403
www.waterwayplastics.com • waterway@waterwayplastics.com