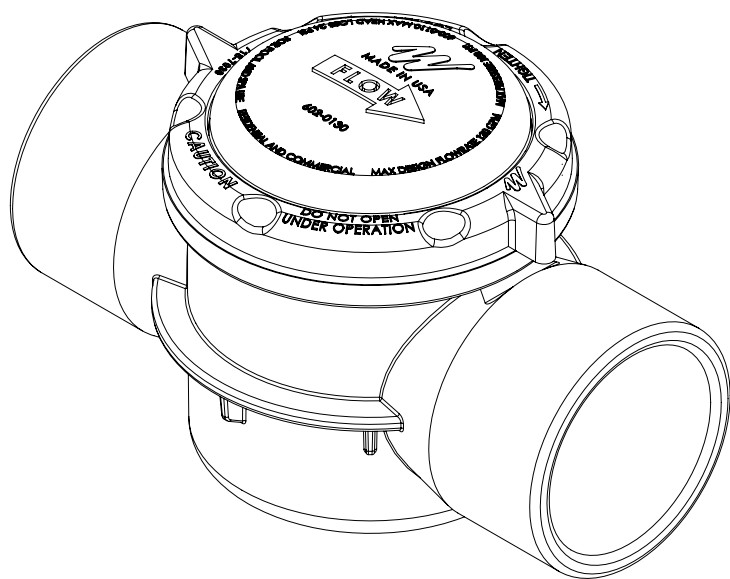


# 2 1/2" S / 3" SPG SERVICEABLE SWING CHECK VALVE INSTALLATION INSTRUCTIONS



**Straight Body Check Valve (600-0111)**

## READ AND FOLLOW ALL INSTRUCTIONS SAVE THESE INSTRUCTIONS

**IMPORTANT:** Directional flow of water is essential for proper function. Serviceable Swing Check Valve is designed for both 2 1/2" Socket and 3" Spigot pipe.

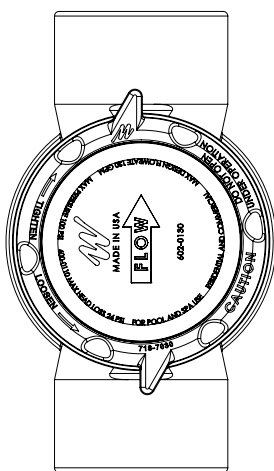
**IMPORTANT:** Prior to installation of valve to fittings, remove lid/valve assembly (#2) to prevent accidental gluing of components.

**CAUTION:** DO NOT allow any glue into the valve body beyond the pipe stops.

## MOUNTING INSTRUCTIONS

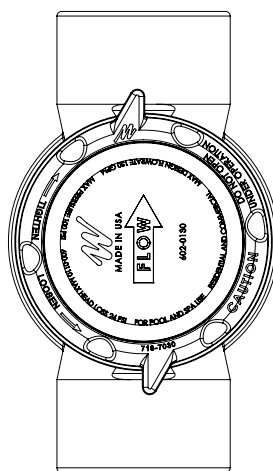
The Check Valve can be installed in either horizontal or vertical plumbing. For vertical plumbing, **use only with upward flow**. Follow CORRECT / INCORRECT diagrams below to ensure upward flow.

## CORRECT



↑  
**WATER  
FLOW  
(CORRECT)**

## INCORRECT

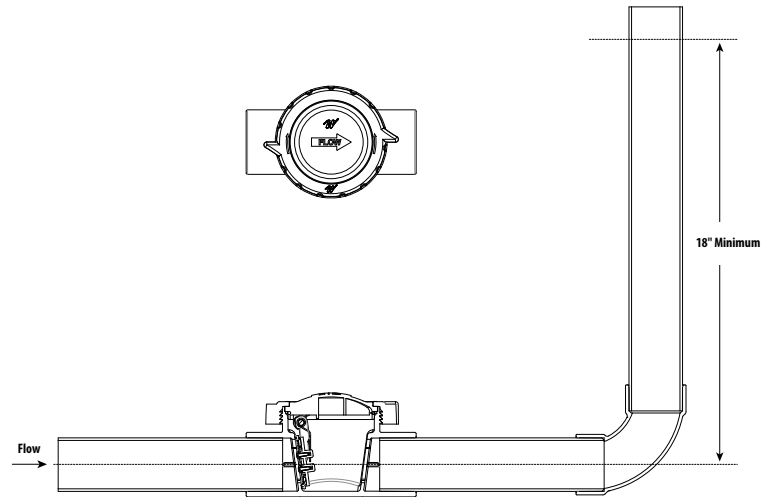


↓  
**WATER  
FLOW  
(INCORRECT)**

## SWING CHECK VALVE LOCATION

- Water flow **MUST** be in the direction of the arrow.

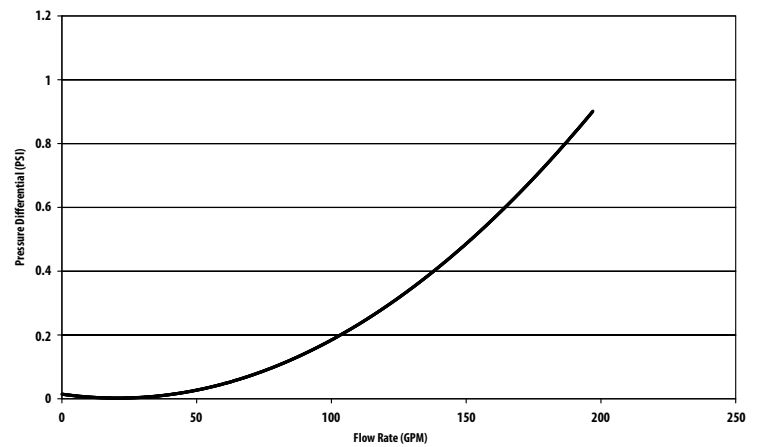
**IMPORTANT:** Locate the Swing Check Valve at the lowest possible position in the plumbing system. Allow for a minimum of 18" water column. The weight of the water column assists in a greater valve seal and function.



## MAINTENANCE

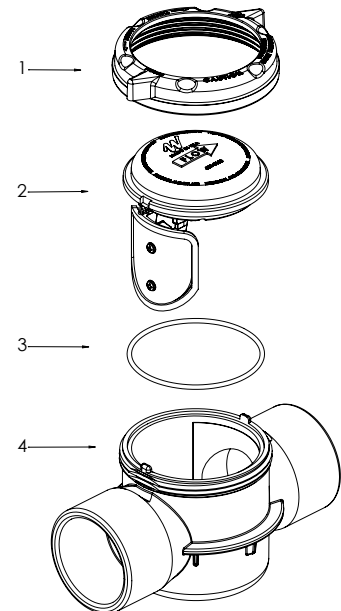
The clear cover permits easy inspection of the Swing Check Valve. If necessary, the valve can be disassembled for inspection of the o-ring and valve assembly. Before reassembly, lubricate o-ring thoroughly with appropriate silicone lubricant.

3" Swing Check Valve Assembly Performance Curve



## SERVICEABLE SWING CHECK VALVE REPLACEMENT PARTS

#	Part No.	Description
1	<b>718-7031-CPVC</b>	Threading Nut
2	<b>705-0111</b>	Lid & Flapper Assembly
3	<b>805-0241</b>	O-Ring
4	<b>602-0121</b>	Body ( <i>must purchase complete valve</i> )
--	<b>810-0270</b>	Instruction Sheet



## WARRANTY

For product registration visit: [www.waterwayplastics.com](http://www.waterwayplastics.com).  
For Warranty questions or claims please contact point of purchase.



2200 East Sturgis Road, Oxnard CA 93030 • Phone 805.981.0262 • Fax 805.981.9403

[www.waterwayplastics.com](http://www.waterwayplastics.com) • [waterway@waterwayplastics.com](mailto:waterway@waterwayplastics.com)