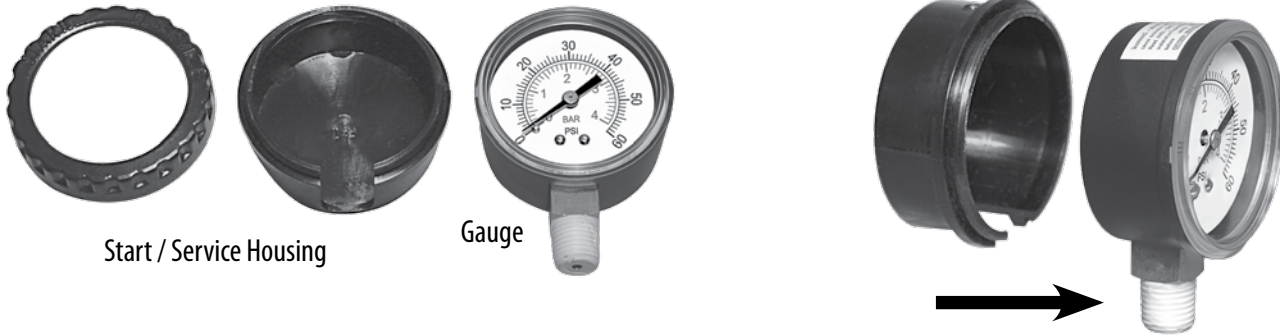


START/SERVICE DIAL (600-4101) INSTALLATION INSTRUCTIONS

For Pressure Gauge: 830-3000



Start / Service Housing

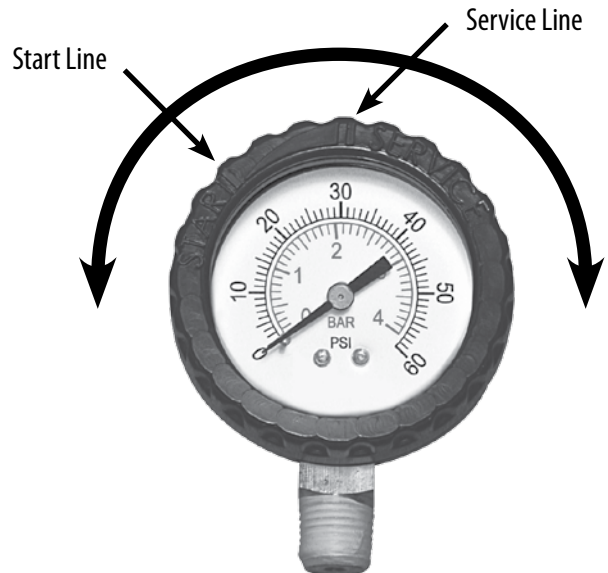
Gauge

NOTE: Pressure Gauge does not have to be removed from filter to install the Start/Service Dial.

1. Slide Service Dial Housing around the Pressure Gauge.



2. Gently snap the Service Dial Face onto housing body.



The Service Dial Face can be rotated. After the filter has been cleaned, turn the Dial so that the "Start" Line lines up with the starting pressure. When the filter pressure reaches the "Service" Line (7-10 PSI over starting pressure) it is time to clean the filter.

WARRANTY

For product registration visit: www.waterwayplastics.com.
For Warranty questions or claims please contact point of purchase.



Waterway™

2200 East Sturgis Road, Oxnard CA 93030 • Phone 805.981.0262 • Fax 805.981.9403
www.waterwayplastics.com • waterway@waterwayplastics.com