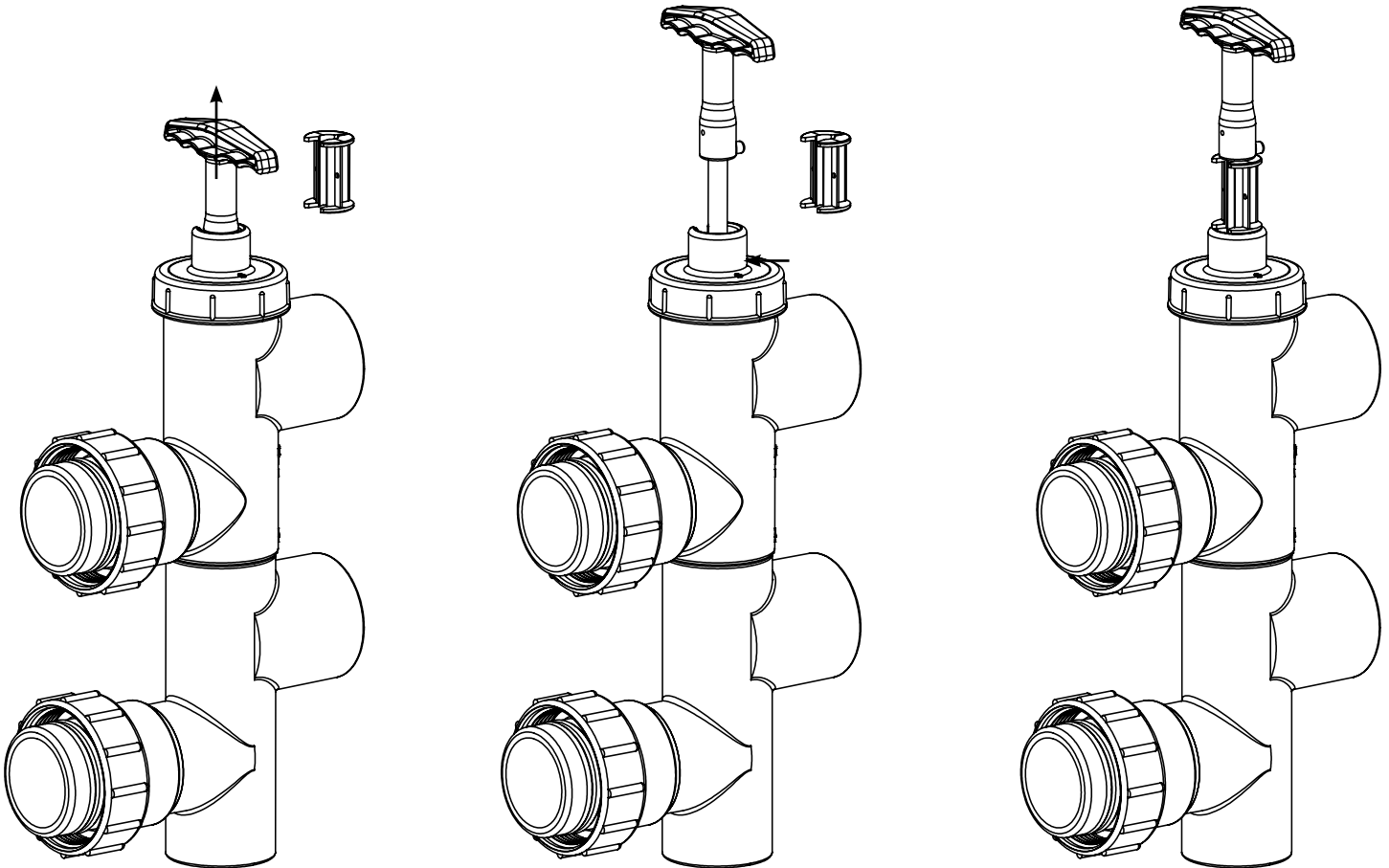


# PUSH-PULL VALVE LOCK INSTRUCTIONS

## 2 1/2" SLIDE VALVE - SAND FILTER ONLY

Although the valve handle will be locked in the UP POSITION (FILTRATION POSITION) by the aid of an internal lock pin, please use the included YELLOW RETAINING BRACKET to further support the valve handle in the UP POSITION as shown in the picture.



### WARRANTY

For product registration visit: [www.waterwayplastics.com](http://www.waterwayplastics.com).  
For Warranty questions or claims please contact point of purchase.



# Waterway™

2200 East Sturgis Road, Oxnard CA 93030 • Phone 805.981.0262 • Fax 805.981.9403

[www.waterwayplastics.com](http://www.waterwayplastics.com) • [waterway@waterwayplastics.com](mailto:waterway@waterwayplastics.com)